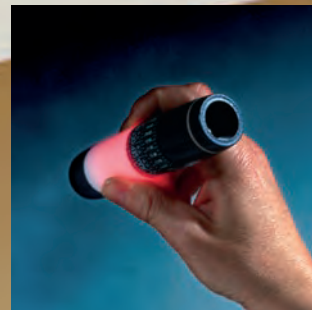




Since 1974  
**Nauticalalia**

2025 Trade Catalogue

More  
than 250  
New Products



Incorporating  **SDL IMPORTS** *hanah* 

[www.nauticalia-trade-sales.com](http://www.nauticalia-trade-sales.com)





Page 163



Page 58



Page 94



Page 150



Page 146



Page 156



# Nauticalialia


Since 1974


Incorporating  **SDL IMPORTS** *hanah* 

## Welcome Aboard!

Welcome to your 2025 Nauticalia Trade Catalogue, featuring more than 2,000 nautical gifts & furnishings, coastal souvenirs, practical boating accessories, and outdoor clothing lines that we think your customers will love; almost 300 of which are new for 2025. Don't miss:

- **Our best-selling crew mugs, updated and priced lower than previous versions (see page 58)**
- **Incredible torch and lighting innovations from Coast (see page 80)**
- **Exclusive nautical sock designs (see page 94)**
- **Beautiful stained glass art sculptures (see page 146)**
- **New designs added to our popular coral creatures collection (see page 152)**

Many of the pressures of inflation and the volatility in shipping costs that have been a feature of the last few years appear to have stabilised, and we have been able to hold the vast majority of prices at 2024 levels this year. We have even reduced the prices of more than 50 items for which the increases of recent years had forced them to exceed key price points and become unattractive. We hope these keener prices will restore sales to previous levels. Look out for the “**New Lower Price**” icon. 

Items marked  are available at dramatically reduced prices while existing stocks last, and they will not be replenished once sold out.

With low minimum order quantities, no minimum order value, generous price breaks, and quick delivery, we hope that what we have to offer will help you trade successfully and stay ahead of your competitors.

To order, please visit [www.nauticalia-trade-sales.com](http://www.nauticalia-trade-sales.com), e-mail [sales@nauticalia.com](mailto:sales@nauticalia.com), or call us on 01932 244369.

## Class of 2025 - Here to help



**Chris Murdoch**  
Managing Director



**Ross Morrell**  
Buying Director



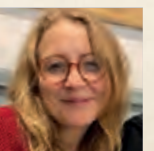
**Ellie Nelhams**  
Buyer



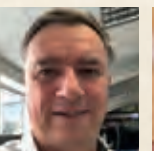
**Aidan Wallace**  
Sales & Marketing



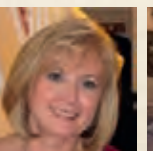
**Mandy Leach**  
Sales & Marketing



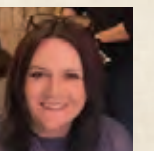
**Lottie Murdoch**  
Sales



**Mark Wilby**  
Operations Director



**Claire Betts**  
Accounts



**Jo Buckingham**  
Accounts



# Contents

## Nauticalia

<i>Clocks, Barometers, Bells, Compasses and Other Instruments</i>	Pages 4-23
<i>Nautical Décor, Globes, Boxes, Lamps, Galileo Thermometers</i>	Pages 24-43
<i>Model Yachts and Historic Ships</i>	Pages 44-55
<i>Drinksware and Tableware</i>	Pages 56-65

## Nauticalia

<i>Outdoor Living, Boating, Chandlery</i>	Pages 66-79
<i>Torches and Watches</i>	Pages 80-93
<i>Clothing, Hats, Caps and Accessories</i>	Pages 94-108

## SDL IMPORTS

<i>Meg Hawkins Natural World Collection</i>	Pages 110-117
<i>Wildlife, Safari Animals, Birds, Wood-effect carvings</i>	Pages 118-126
<i>Fantasy Figures, Fairies, Dragons, Princesses</i>	Pages 127-129
<i>Cloisonné Enamelled Boxes</i>	Pages 130-131
<i>Caps &amp; Hats</i>	Pages 132-133
<i>Rustic Décor, Painted Boxes, Posters</i>	Pages 134-139
<i>Pencil Sharpeners</i>	Pages 140-141
<i>Glass Floats</i>	Pages 142-143

## *hanah*

<i>Coastal Décor, Wall Art, Mirrors, Hanging Ornaments</i>	Pages 146-197
<i>Bears, Resin Characters, Fat Ladies, Old Dears, Fat Blokes</i>	Pages 198-203
<i>Marine Wildlife, Puffins, Seals, Seagulls and Snowglobes</i>	Pages 204-209
<i>Beach Hut Décor</i>	Pages 210-211
<i>Lighthouses</i>	Pages 212-214
<i>Textiles, Tea Towels, Aprons, Cushions, Bunting</i>	Pages 215-223
<i>Greeting Cards and Playing Cards</i>	Pages 224-233
<i>Quick Order Keyrings &amp; Fridge Magnets</i>	Pages 234-241

# Tarnish-free Marine Instruments



## Fastnet Instruments

The *Fastnet* range of porthole instruments are mounted onto mahogany-coloured wooden boards with brass corners. They feature white faces with black hands and roman numerals, and 12cm cases which have been treated with a special tarnish free coating (see below) so that they do not require polishing. Quartz clock movements use 1x AA battery (not supplied). Barometers display pressure in millibars and inches.



6788 Fastnet Clock/Barometer Set. Board measures 33x18cm.

6759 Fastnet  
Clock/Barometer/  
Thermometer/  
Hygrometer Set.  
Board measures  
18x46cm.

## About Tarnish-free Marine Instruments

Our ranges of super durable, tarnish-free instruments have been finished with a protective coating using advanced surface treatment technology. This coating, far superior to lacquers and varnishes, can withstand more than 720 hours (the longest test period for this process) under NSS (Neutral Sea Salt) laboratory testing. NSS testing is a certificated and standardised test method used to check corrosion resistance of coatings on metals such as brass, zinc and steel. It is an accelerated corrosion test that produces a corrosive attack on the product coating from which the results can predict its suitability for use as a protective finish. These instruments will resist tarnishing even when exposed to the harsh marine environment for extended periods.



*No more  
polishing*



## Anchor Instruments

The *Anchor* range of porthole instruments sit recessed into mahogany-coloured wooden boards and plinths. They feature cream faces with black hands and roman numerals, and 10cm cases which have been treated with a special tarnish free coating (see below, left) so that they do not require polishing. Quartz clock movements use 1x LR1 battery (not supplied). Barometers display pressure in millibars and inches.



**6748 Anchor Porthole Clock/Barometer/Thermometer/Hygrometer Set.** This instrument set is supplied with removable stands that allow you to mount on a wall or free-standing on a shelf. Board measures 36x15cm.



*Free-standing option*



**6758 Anchor Porthole Rotating Weather Station.** This unique desk instrument set combines clock, barometer, thermometer, hygrometer, and compass into a mahogany-effect cube that can be rotated for easy viewing. Measures 14x14x17cm.



**6750 Anchor Porthole Clock and Barometer Set.**

Clock and barometer mounted in a traditionally-shaped board that has provision to be hung in vertical or horizontal orientation (instrument movements can easily be repositioned within their cases). Measures 26x13cm.



6746

**6746 Anchor Porthole Clock Paperweight, 10cm.** Mounted in a wooden base with non-slip feet.



6747

**6747 Porthole Compass Paperweight, 10cm.** Coordinating with the *Anchor* clock paperweight, this dry-card compass sits in a porthole case on a wooden mount with non-slip rubber feet.



### Porthole Magnifier

The same porthole case used in our *Anchor* instruments houses a 2.5x magnification glass lens and is mounted on three legs; perfect for reading fine print or intricate details on your nautical charts. Diameter 10cm, height 4cm.

**6745 Porthole Tripod Magnifier, 10cm.**

**6744 Anchor Porthole Desk Clock.** Mounted in a smart wooden plinth, angled for easy viewing, with non-slip feet. Measures 14x14x8cm.





# Tarnish-free Marine Instruments

## Mounted Clipper Tarnish-free Range – with QuickFix

The *Clipper* range of instruments are now available mounted onto mahogany-coloured wooden boards with brass corners.

### 6769 Clipper Clock/Barometer Set.

Board measures 33x18cm.

### 6789 Clipper Clock/Barometer/Thermometer/Hygrometer Set.

Board measures 18x46cm.



6769



6789

## Clipper Tarnish-free Range – with QuickFix

Brass or chrome-plated brass cases with super-durable tarnish-free coating (see page 4) and QuickFix mounting system. Case diameter 12cm, depth 4cm. Quartz clock movements use 1x AA battery.

6770 Clipper Clock (QuickFix), Brass.

6771 Clipper Barometer (QuickFix), Brass.

6751 Clipper Code Flag Clock (QuickFix), Brass.

6752 Clipper Clock (QuickFix), Chrome.

6754 Clipper Barometer (QuickFix), Chrome.

6753 Clipper Code Flag Clock (QuickFix), Chrome.

6773 Replacement Base plate for Clipper Quick Fix Instruments.



6770



6771



6751



6752



6754



6753

## About QuickFix System

This unique QuickFix system allows the instrument to be locked hard to a bulkhead or wall but removed, in seconds, by hand. The instrument is supplied with a base plate which is screwed to the wall or bulkhead (instructions and drill hole template included). The instrument then simply slots over the base plate and with a gentle twist, is locked on. A reverse twist removes it again. This makes changing batteries easy, removal for storage easy, and avoids the tricky job of not scratching your polished case when screwing the instrument to the wall! QuickFix can also act to seal the instrument mechanism making it waterproof. In underwater tests, clocks fitted with the QuickFix waterproof system worked continuously at a depth of 300mm for more than 3 months. Note: barometers with the QuickFix system do not have the full waterproof system as these instruments need exposure to air pressure in order to operate.





# Tarnish-free Marine Instruments



6774



6755

## Fitzroy Tarnish-free Radio Silence Clocks – with QuickFix

Brass or chrome-plated brass cases with super-durable tarnish-free coating (see page 4) and QuickFix mounting system. Case diameter 15cm, depth 4cm. Quartz clock movements use 1x AA battery.

**6774 Fitzroy Radio Silence Clock (QuickFix), Brass.**

**6755 Fitzroy Radio Silence Clock (QuickFix), Chrome.**



Tarnish-free



QuickFix

## Fitzroy Tarnish-free Range – with QuickFix

Brass or chrome-plated brass cases with super-durable tarnish-free coating (see page 4) and QuickFix mounting system. Case diameter 15cm, depth 4cm. Quartz clock movements use 1x AA battery.

**6775 Fitzroy Clock (QuickFix), Brass.**

**6776 Fitzroy Tide Clock (QuickFix), Brass.**

**6777 Fitzroy Barometer (QuickFix), Brass.**

**6778 Fitzroy Thermometer/Hygrometer (QuickFix), Brass.**

**6779 Fitzroy Clock (QuickFix), Chrome.**

**6756 Fitzroy Tide Clock (QuickFix), Chrome.**

**6757 Fitzroy Barometer (QuickFix), Chrome.**

**6749 Fitzroy Thermometer/Hygrometer (QuickFix), Chrome.**

**6772 Replacement Base plate for Fitzroy Quick Fix Instruments.**



Tarnish-free



QuickFix



6775



6776



Tide Clock



6777



6778



6779



6756



Tide Clock



6757



6749

## About Tide Clocks

Our tide clocks provide an “at-a-glance” indication of tidal state by means of the extra red hand – showing high, low and half tides – which follows the lunar cycle (taking approximately half-an-hour longer to go “round the clock” than the hour hand). A single quartz movement powers all the hands. The faces have Arabic numerals.

**IMPORTANT:** Because the lunar cycle varies in length day by day, but is constant over a period of 28 days, there will be times when the tide indicator varies by a few minutes ahead or behind the actual tides. This is insignificant for most needs but may need consideration in areas with very strong or double tides, short slack periods etc. Reference to tables is essential for accurate navigation.



Tide Clock



# Classic Brass Clocks & Barometers

## The Brass Instruments for which Nauticalia is Renowned

Our porthole instruments have hefty solid cast brass casings, hinged scuttle clamps, bevelled glass fronts and our trademark brass hands and black subsidiary indicators on light cream faces. The movements are good quality – battery-operated quartz for the clocks and silvered aneroid for the barometers. They are polished to the highest standards, then to protect this high lustre finish, they are ultrasonically cleaned to remove any impurities, spray lacquered then stove baked to harden the lacquer and give maximum protection. They offer excellent quality at medium-range prices. Clocks have bold Roman numerals. Barometers show millibars and inches of mercury. Clocks use 1x AA battery.



7100

### Brass Saloon & Bridge Barometers

Intended for the main bulkhead of larger yachts, making an eye-catching feature.

**7100 Brass Saloon Barometer, 23cm.**  
Flange diameter 23cm, dial 14cm, depth 6cm.

**4842 Brass Bridge Barometer, 18cm.**  
Flange diameter 18cm, dial 11cm, depth 6cm.



4842

### Chrome Bridge Instruments - 18cm Diameter

Chrome plated on heavy cast brass cases, our 'Bridge' instruments measure 18cm across (dial diameter 11cm), with a depth of 6cm, making them particularly suited to a large yacht's bridge or the saloon of a mid-range vessel.

**4844 Chrome Bridge Clock, 18cm.**  
**4845 Chrome Bridge Barometer, 18cm.**



4844



4845

### Chrome Neptune Instruments

Our Neptune instruments have chunky chrome-plated cast brass casings, 12cm in diameter with bevelled glass fronts. Clock uses a quartz movement, requiring 1x AA battery. Barometer has an aneroid movement and shows pressure in inches and millibars.

**5184 Chrome Neptune Barometer.**  
**5226 Chrome Neptune Clock.**



5184



5226

### Aluminium Porthole Clock

Similar in design to our famous brass porthole clocks, the case is cast from solid recycled aluminium and polished to a mirror-like finish. The face is white with black roman numerals, black hands, and a red second hand. Quartz movement uses 1x AA battery. Diameter 28cm.

**5228 Aluminium Porthole Clock, 28cm.**





## Riviera Instruments

The Riviera instruments have heavy solid brass cast casings, opening portholes with bevelled glass fronts and a single scuttle clamp closure. Holes for fixing to a bulkhead or wall are hidden inside the case making fitting easier and keeping the outer case neat. Good quality movements – battery operated (1x AA) quartz clocks and silvered aneroid barometers. The chrome-plated versions are the same brass castings with heavy chrome plating. Both brass and chrome options are polished to a high finish and stove lacquered.



6780



6781



6790



6791

## Riviera Brass Range

Flange diameter 12cm, dial 8cm, depth 4cm

6780 Brass Riviera Clock.

6781 Brass Riviera Barometer.

## Riviera Chrome Range

Flange diameter 12cm, dial 8cm, depth 4cm

6790 Chrome Riviera Clock.

6791 Chrome Riviera Barometer.

## Riviera Brass Clock & Barometer Set

Mounted on a varnished hardwood presentation board. Measures 32x16cm

6782 Mounted Riviera Clock and Barometer Set, 33x17cm.



6782



6766



6767

## Chatham Tarnish-free Range – with QuickFix

Brass cases with super-durable tarnish-free coating (see page 4) and QuickFix mounting system. Case diameter 18cm, depth 4cm.

Quartz clock movements use 1x AA battery.

6766 Chatham Clock (QuickFix), Brass.

6767 Chatham Barometer (QuickFix), Brass.

6772 Replacement Base plate for Chatham/Fitzroy Quick Fix Instruments.



Tarnish-free



QuickFix

# Brass Clocks & Barometers

## Flagship Weather Station

Set into an elegant brass porthole are four instruments to give you an at-a-glance guide to the prevailing conditions - a barometer, with aneroid movement and scale in inches and millibars, a thermometer in C and F, a hygrometer, and a clock. Measures 31cm across. Clock requires 1x AA battery.

**5178 Flagship Weather Station.**



## Ship's Time Clock

At the centre of this hardwood ship's wheel, a solid brass porthole houses a ship's clock with a large clear cream face and black Arabic numerals. It measures 62cm across - tip to tip - so it is quite a substantial piece that will look stunning in the right setting. Porthole diameter 28cm. Quartz movement uses 1x AA battery.

**7115 Ship's Time Clock.**

## Schatz Marine Instruments

Schatz, founded in 1881, are the world's leading manufacturer of classic ships' clocks, barometers and associated instruments, and have supplied both commercial and naval fleets for many years. Cases are a combination of machined solid brass castings, pressings and spinnings, heavily stove-lacquered for a lasting finish. The white faces, with black hands and Roman numerals, are viewed through a substantial glass opening port with a brass cleat fixing. This allows access to the movements for battery changeover or adjustment without removal from the bulkhead.

*Schatz*  
1881



## Schatz Royal Range

Top of the range instruments, at home in the saloons and staterooms of the world's superyachts. The intricate workmanship is protected in stove-lacquered, solid brass cases with thick glass ports secured by a brass scuttle clamps. Dial 13cm, case diameter 18cm, depth 9cm.

**5021 Schatz Royal Ocean Clock.** Sounds out the fascinating "Ship's Bells" watchkeeping system of four hours on four hours off, striking one bell after the first half-hour, two after an hour and so on until the end of watch "eight bells" - time to change crew and start the pattern again. Quartz movement uses 1x AA battery.

**5023 Schatz Royal Ocean Barometer/Thermometer.** Calibrated in millibars and millimetres. The lower half of the dial has a thermometer that measures in Celsius and Fahrenheit.

## Schatz Midi Range

Specifically aimed at smaller vessels, where the Royal range would look oversized in relation to other cabin furnishings, but where top quality is still required. Case diameter 16cm, clock face diameter 10cm, depth 7cm.

**5031 Midi Ocean clock, brass, quartz.** Smaller version of Royal Ocean (5021, left). Uses 1x AA battery.

**5033 Midi barometer, brass.** Calibrated in millibars and millimetres.



5021

5023



5031

5033

## About the "Ships' Bells" Watchkeeping System

Timekeeping has always been essential on board ships, both for navigation and to ensure that the crew are adequately rested. Before the invention of reliable clocks, it was kept by striking a bell in conjunction with the cycles of a half-hour sand glass. The day was divided into four hour watches, each further subdivided into eight half hour periods. At the passing of each half hour the bell was struck the corresponding number of times: once after the first, twice after the second, and so on. At the sounding of "eight bells" the watch was completed, the crew changed over and the process would start again. The Schatz Ocean ranges have movements that can chime this pattern.



# Desktop Clocks & Pocket Watches

## Franklin Watch Clock

Displayed in the National Maritime Museum, Greenwich, are the remains of a silver-cased pocket watch - a relic of Sir John Franklin's last expedition (1845-48). It was found in an abandoned boat at Erebus Bay, King William Island, in May 1859, and it is from this that the Franklin desk clock takes its inspiration. An oversized pocket watch, it has a nickel-plated cast aluminium case and a crisp white face with black numerals. Unlike the original, it has a quartz movement so doesn't need winding. Takes 1x AA battery. Stands 24cm tall.



2104 Franklin Pocket Watch Clock, 24cm.



## Binnacle Clock

The domed brass case is reminiscent of the traditional ship's binnacle, but houses a clock rather than the usual gimballed compass. Quartz movement requires 1x AA battery. Stands 13cm tall.

2105 Binnacle Clock, 13cm.

## Discovery Telescope Clock

Desk clock powered by a quartz watch movement and housed in an antique brass-effect telescope. Length 17cm, face diameter 5cm. LR44 battery supplied.

4077 "Discovery" Telescope Clock, 17cm.



## Greenwich Pocket Watch

Pocket watches were once the only option, but to wear one today lends the owner a most distinctive air. This one, with its aged-effect dial and solid brass case, looks like a 19th century antique, but - unlike the originals - won't break the bank. Also unlike the originals, it has a reliable quartz movement, so you can't use it as an excuse to be late! Case diameter 5cm. Supplied with chain in a velvet bag. LR44 battery supplied.

2944 Greenwich Meridian Pocket Watch, 5cm.



# Desktop Clocks & Instruments

## Desk Set can be Displayed in Four Ways

Cleverly designed so you can display this instrument set in four different poses. The instruments simply twist in their mountings to suit how you want to display them. Clock, thermometer and hygrometer. Clock uses 1x LR44 battery (included). Mahogany-stained block measures 15x10cm.

*Desk set sitting upright*



*Desk set laying flat*

**2900 Desktop Instrument Set.**

## Boxed Clock and Barometer Set

The movements from our popular Cockpit Clock and Barometer set on an adjustable plinth within a polished hardwood case. The top of the case is glazed, so you can see the instruments even with the lid closed. 20x10x7cm. LR44 battery supplied.

**5345 Brass Clock & Barometer Set in Box.**



## Antique Marine Clock with QuickFix

If you have a traditional décor or classic boat, it may not suit a highly-polished brass or chrome instrument on the wall. This clock will blend in with its authentic antique look, aged brass case, parchment-style dial, and Roman numerals. The quartz movement however, offers modern timekeeping and reliability, and uses 1x AA battery. Diameter 12cm.

**6743 Antique Marine Clock.**



*See explanation on page 6.*

## Greenwich 1884 Desk Clock

The 1884 clock acknowledges the year in which Greenwich was internationally recognised as 'The place where time begins'. Cast in brass with an antique finish and faux leather binding around the edge. Quartz movement uses 1x AA battery. Stands 14cm tall.

**2950 Greenwich "1884" Desk Clock, 14cm.**



## Boxed Clock

This smart desk clock, with a crisp white face, contrasting black hands, and Arabic numerals, is set in a glass-topped hardwood case measuring 16x16x10cm. Quartz movement uses 1x AA battery.

**Clearance! 6742 Boxed Clock.**





## Nauticalia Ships' Bells

Nauticalia has been world renowned for its ships' bells for more than 40 years, supplying a broad range of customers from shipping companies and world navies, sports clubs, pubs, and restaurants, through to pleasure boaters and home owners. Each is manufactured in the finest tradition - sand-cast solid brass turned and polished to an immaculate sheen. We choose not to lacquer our bells as we find even the best lacquers quickly break down in a marine environment, causing them to discolour. We prefer them to age naturally, or you can polish them easily without having any lacquer to remove first.

### Ships' Bells

Made of high quality solid brass these heavyweight sandcast bells have a deep resonant tone and can be heard over long distances. Ideal for marine use, commercial warning bells, workplace/school bells and a wide range of domestic uses.



5081 4" Brass Ship's Bell.  
5082 5" Brass Ship's Bell.  
5083 6" Brass Ship's Bell.  
5084 7" Brass Ship's Bell.  
5093 8" Brass Ship's Bell.

### Ship's Bell Specifications

Reference	Dome dia. at mouth		Height inc. bracket	
	in.	mm	in.	mm
5081 Ship's bell,	4"	100	6	150
5082 Ship's bell,	5"	125	9	220
5083 Ship's bell,	6"	150	11	280
5084 Ship's bell,	7"	176	13	330
5093 Ship's bell,	8"	203	16	400



**CAN BE PERSONALISED**  
Please ask for details

### Ocean Premium Quality Ship's Bell

This premium bell is made to match or exceed the specifications set by SOLAS and Lloyds Register. To give the required tone and volume, the grade of brass, proportions, thickness and weight all have to be tightly controlled during production, resulting in a bell of exceptional quality and reliability.

5106 12" Ocean Range Premium Ship's Bell, no bracket.

8149 Bracket for 12" Ship's Bell.



**CAN BE PERSONALISED**  
Please ask for details

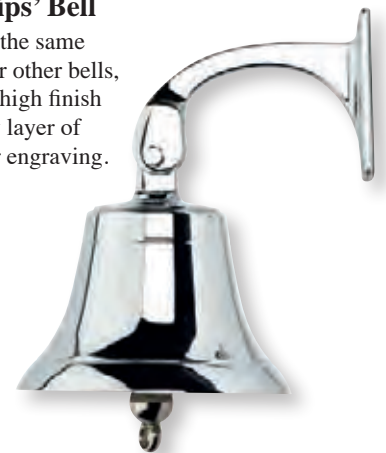
### Ocean Bell Specifications

Reference	Dome dia. at mouth		Height inc. bracket		Weight kg
	in.	mm	in.	mm	
5106 Ocean bell, 12"	305		10	254	9.0

### Chrome-plated Ships' Bell

Cast from solid brass in the same traditional manner as our other bells, this bell is polished to a high finish then plated with a heavy layer of chrome. Not suitable for engraving.

5323 Ship's Bell, chrome-plated, 6".



### Chrome Bell Specifications

Reference	Dome dia. at mouth		Height inc. bracket		Weight kg
	in.	mm	in.	mm	
5323 Chrome bell, 6"	145		8	200	1.4

# Brass Bells & Lanyards

## Quayside Bells

This range of bells provides a lighter weight, and thus more economical alternative to our heavyweight range. Still solid brass, and with a loud distinct tone, they come supplied with a cotton bell rope as standard. Not lacquered.

### 2946 4" Bell with Lanyard.

10cm at mouth, weighs 400g.

### 2947 5" Bell with Lanyard.

13cm at mouth, weighs 540g.

### 2948 6" Bell with Lanyard.

15cm at mouth, weighs 820g.



**CAN BE PERSONALISED**  
Please ask for details



## Cotton Lanyard (left)

**5095 4" Cotton Lanyard.**  
For 3-6" bells, length 11cm.

**5096 7" Cotton Lanyard.**  
For 5-7" bells, length 22cm.

**5097 11" Cotton Lanyard.**  
For 7-12" bells, length 29cm.

## Jute Lanyard (right)

**5120 4" Jute Lanyard.**  
For 3-6" bells, length 11cm.

**5121 7" Jute Lanyard.**  
For 5-7" bells, length 22cm.

**5122 11" Jute Lanyard.**  
For 7-12" bells, length 29cm.



## Brass Bells

Our budget range of cast brass bells supplied with wall bracket and cotton bell rope.

**CAN BE PERSONALISED**  
Please ask for details

**15620 Ship's Bell, 13cm Diameter.**

**15621 Ship's Bell, 10cm Diameter.**



## Bell Engraving

We specialise in deep-cut engraving on bells. It is usual to engrave in plain capitals with the craft's name, port and date on the side opposite the bracket. We charge a standard fixed rate per letter or number. On 4-5" bells the lettering is approximately 9mm high and on 6-8" bells 2cm high, but this may vary with the length of words.





## Cast Handbells

Made in the same time-honoured way as our famous ships' bells (page 13) – sand-cast, machined smooth, then polished to a bright finish. The turned wooden handles are varnished with a brass fixing nut on top. Engravable for presentation purposes, and officialdom (*we have supplied Town Criers worldwide, from London to Niagara!*). Not lacquered.

**5089 4½" Brass Handbell.** Diameter 12cm, height 22cm.

**5090 6" Brass Handbell.** Diameter 15cm, height 28cm.



**15631**  
*CAPTAIN'S BELL*  
engraving

**15629**  
*Antique*  
finish

## Hand Bells

Lightweight and economical handbells cast in solid brass with hardwood handles.

**15631 Captain's Bell, 13cm.** Deep cut engraving with black enamel infill.

**15629 Handbell with Antique Finish, 15x5.5cm.**

## Incredible Value Aluminium Bells

Casting these bells from aluminium, rather than brass, offers a significant cost saving. And finishing them with a heavily-lacquered antique brass-effect coating provides an authentic appearance at very keen prices. Not suitable for engraving.



**New!**

## Wall-mounted Bells

Supplied with cotton bell rope.

**New! 2906 5" Aluminium Bell with Lanyard, antique brass finish.**

**New! 2908 7" Aluminium Bell with Lanyard, antique brass finish.**

**New! 2913 8" Aluminium Bell with Lanyard, antique brass finish.**

## Handbells

With a turned and varnished hardwood handle.

**New! 2902 8" Aluminium Handbell, antique brass finish.**

**New! 2904 6" Aluminium Handbell, antique brass finish.**

**New! 2905 3" Aluminium Handbell, antique brass finish.**



**New!**

# Sound Signals

## The Original Paratrooper's 'Cricket'

The ACME No. 470 Clicker, or 'Cricket' as it became known, was conceived in the 1920s as a time-keeping device for musicians, but was adopted in 1944 by US paratroopers who needed a way of discreetly identifying friendly forces after landing behind enemy lines at night. 7,000 were supplied ahead of the D-Day invasion, very few of which now survive and are expensive antiques. Our authentic replica is made in the UK by the same company, on the actual tooling and machines used in 1944. It is superb quality and almost indistinguishable from the originals. Nowadays, they also serve as a useful dog training aid. Supplied wartime-style cardboard box with certificate of authenticity.



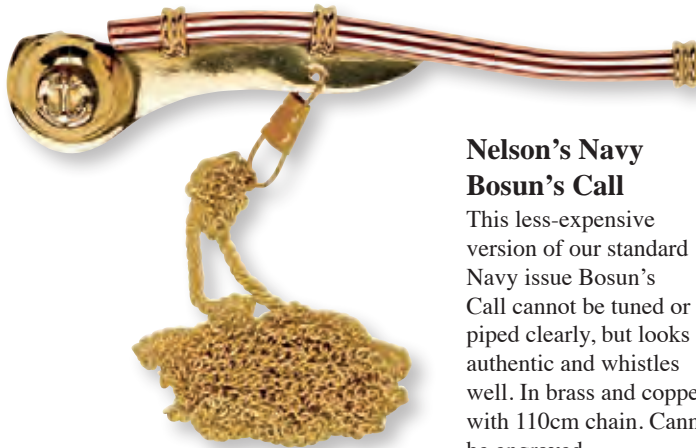
1944 ACME No.470 Clicker.

## The Whistle that Helped Titanic's First Mate Save 700 Lives!

Authentic replica of the whistle used by *Titanic's* First Mate, as used so dramatically in the 1997 film, by Kate Winslet, to call her rescuers. British-made by Acme, who supplied the White Star Line in 1912, using the original tooling. Certificate of authenticity included.



1912 RMS Titanic Whistle.



## Nelson's Navy Bosun's Call

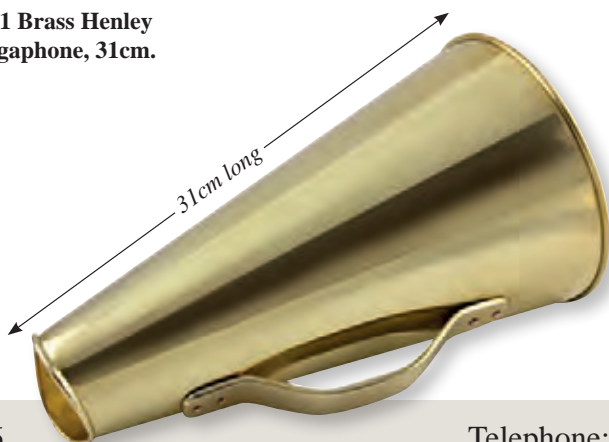
This less-expensive version of our standard Navy issue Bosun's Call cannot be tuned or piped clearly, but looks authentic and whistles well. In brass and copper, with 110cm chain. Cannot be engraved.

2090 Nelson's Navy Souvenir Bosun's Call.

## Henley Megaphone

Sir Francis Chichester never sailed without one, nor should any helmsman or sailing master! This gleaming brass loud-hailer's resonance is calculated to give optimum clarity and range, and is popular with rowing clubs. 31cm.

2141 Brass Henley Megaphone, 31cm.



## Brass Signal Horns

Horns have been used in shipping and other forms of transport for centuries to attract attention and give warning, particularly in fog. Our traditional mouth horns are solid brass with nickel-plated mouth pieces and strong brass 'reeds' for longevity. Our 'taxi' horns have rubber bulbs and deliver a hefty, and somewhat amusing, 'honk honk', evoking images of classic early cars negotiating crowded city streets and bustling harbours being criss-crossed by a myriad of small craft.



2134 Brass Taxi Horn, 38cm.  
2135 Brass Taxi Horn, 45cm.



Anchor detail on each.

2128 Signal horn with chain, brass, 15cm.

2129 Signal horn with chain, brass, 22cm.

2130 Signal horn with chain, brass, 29cm. (not shown).





## Porthole Magnifier

The same high spec porthole case used in our *Anchor* instruments (see page 5) houses a 2.5x magnification glass lens and is mounted on three legs; perfect for reading fine print or intricate details on your nautical charts. Diameter 10cm, height 4cm.

**6745 Porthole Tripod Magnifier, 10cm.**



## Domed Tripod Magnifier

Magnifying 2.5 times, it's ideal for reading charts or small print documents. Solid brass frame and legs. The weight of the glass dome means it also makes an excellent paperweight. Presented in a hardwood box with brass corners. There is a glass window in the lid to enable viewing of items contained in the box. Diameter 9cm, height 5cm.

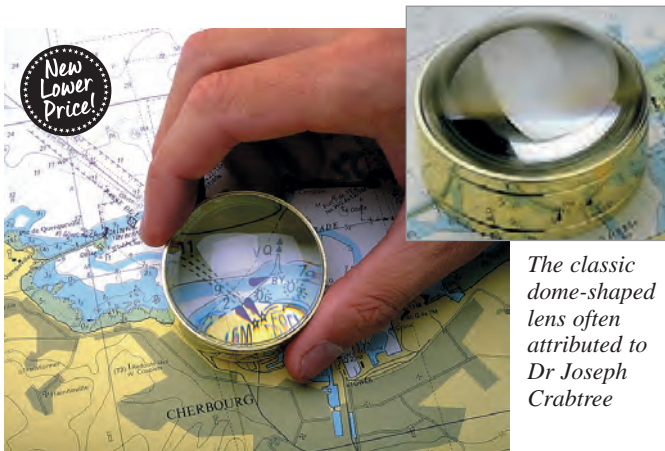
**4622 Domed Magnifier in Box, 9x5cm.**



## Observatory Magnifier

Believed by some to have been designed in 1804 by the legendary British inventor and polymath Joseph Crabtree, the functional simplicity of his brass-and-glass domed "Observatory" magnifier has never been surpassed or needed modification. Magnifies about 3x. Diameter 5cm, height 3cm.

**New Lower Price! 7176 Brass Crabtree Observatory Magnifier.**



*The classic dome-shaped lens often attributed to Dr Joseph Crabtree*

## Navigator's Magnifier

This handy chart weight contains a 2.5x magnifier which swings out to help study those important intricate details. Antique brass-effect case measures 6.5cm diameter.

**7294 Navigator's Magnifier, Antique Finish, 6.5cm.**



## Tower Magnifier

The Tower Magnifier stands 25cm tall and consists of three magnifying lenses (each approx 1.5x) which you can swing in and out of use independently. Experiment with different combinations of lens numbers and spacing to vary the magnifying power and focal point to suit your subject. It's an intriguing instrument, reminiscent of very early microscopes.

**5229 Tower Magnifier.**



## Naval-style Magnifying Glass

A traditionally-styled hand lens with an antique bronze effect, and turned hardwood handle with inlaid brass anchor motif. 2.5x magnification. Length 26cm.

**5864 Wooden & Brass Magnifying Glass, 26cm.**





# Brass Paperweights & Compasses

## Antique-effect Compass Paperweight

With a case design reminiscent of an antique pocket watch, this compass paperweight features a domed glass top which serves to magnify the needle and markings inside. Diameter 8cm

**7291 Compass, Antique Finish.**



Reverse side

## Robert Frost Compass with Poem

Brass compass engraved with Robert Frost's poem "The Road Not Taken". Supplied with leather case. Diameter 7cm.



Robert Frost poem engraved

New Lower Price!

**New Lower Price! 5737 Compass with Robert Frost Poem, 7cm.**



## Cutty Sark Tribute Compass

Named in tribute to the world famous clipper *Cutty Sark*, this antique-finish brass compass has an engraving of the globe on the underside centering particularly on Australia, destination for *Cutty Sark* on many occasions to bring wool and other cargo back to England. In December 1883, *Cutty Sark* broke the record for the fastest passage back to London from Australia, she was to break her own record on several occasions subsequently. Diameter 8cm.

**4623 "Cutty Sark" Compass.**



Reverse



## Brass Compass in Leather Pouch

Simple, functional, compass in polished brass, with a leather case. Diameter 7cm.

**7281 Brass Compass in Leather Pouch.**



## 'Journey of a Thousand Miles' Compass

This distinctive compass paperweight features a bold glass dome which serves to magnify the compass card inside, and an antique-effect brass case engraved with the phrase 'A Journey of a Thousand Miles Must Begin with a Single Step'. Diameter 10cm.

**4728 Journey of a Thousand Miles Compass, 10cm.**



## Compass Paperweight

A smaller, budget alternative to our 'Journey of a Thousand Miles...' compass (above), measuring 6.5cm diameter.

**15643 Desk Compass, 6.5cm.**



## Domed Compass Paperweight

Antique-finished brass case, parchment-style compass card and protective domed glass top together make the perfect chart table compass and paperweight. Diameter 8cm, weight 250g.

**4624 Domed Compass Paperweight.**





# Brass Paperweights & Compasses



**RMS Titanic Tribute Compas**  
 This is a fully functional compass cast in solid brass. Engraved in tribute to *RMS Titanic* and includes a photo-etched image on the lid and engraved historical profile inside. Diameter 6cm. **3801 RMS Titanic Tribute Compass, brass, 6cm.**

## Compass Paperweight

Made of chunky brass with a simple working dry compass encased in the centre, this is a novel way for an executive to make sure business is pointing in the right direction. Diameter 5cm, weight 129g.

**New Lower Price! 7152 Wooden Box for Compasses.** Wooden mahogany-stained box with brass engraving plaque.



**New Lower Price! 7154 Brass Compass Paperweight.**



7154 & 7152



7152

## Fob Compass

Dry needle brass compass in a pocket watch-style brass case, supplied in a polished hardwood box. Diameter of compass 5cm, length of chain 46cm, box measures 8x8x4cm.

**4531 Pocket Compass & Chain in Wooden Box.**

*Note: Compasses not suitable for serious navigation*



**15641 Brass Compass, 7cm.**

## Budget Compass Paperweight

Made from pressed brass sheet, rather than machined solid brass, this compass offers a lighter weight and economical alternative to our famous chunky paperweights (left).

**15640 Compass in Wooden Presentation Box, 9cm.**



## Souvenirs Keyrings, Magnets and Medals

These coin-shaped keyrings, magnets, and medals, make excellent souvenirs of a visit to London or Portsmouth, and are ideal for retailers in tourist locations. Gold plated for an enduring shine, and infilled with coloured enamel, each measures 4cm in diameter.



£ CLEARANCE PRICE

**Clearance! 1360 Greenwich Coin Keyring.**

**Clearance! 1361 Greenwich Coin Magnet.**

**Clearance! 1362 Greenwich Coin Medal.**

**Clearance! 1345 Victory Nelson Coin Keyring.**

**Clearance! 1346 Victory Nelson Coin Magnet.**

**Clearance! 1347 Victory Nelson Coin Medal.**



£ CLEARANCE PRICE



# Calendars & Sundials

## 50-year Calendars

Long-term calendars read the day of the week of any date of their 50 year span.

**4636 Antique Brass 50-year Calendar.** Embossed

**4640 Brass 50-year Calendar, 6cm.** Etched.



4636



4640



4707



4639

## Executive 50-year Calendars Set in Marble

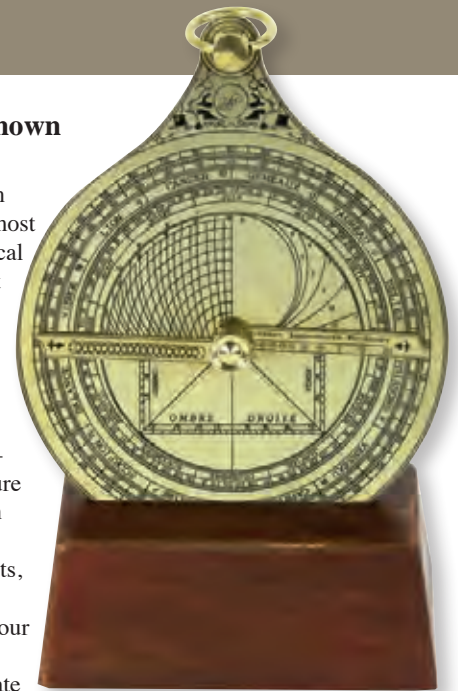
**4707 Antique Brass 50-year Calendar, 8cm.** Embossed.

**4639 Brass 50-year Calendar on Marble Base, 8cm.** Etched.

*Please note: Due to current stock levels, some items may begin 3 or 4 years ago.*

## Astrolabe - the little-known GPS of Ancient Times

You may not have heard of an astrolabe, but it remains the most used multipurpose astronomical instrument in history. Earliest examples date from around 200BC, but they rose to prominence in the Middle East and Europe in the Middle Ages. Essentially, it's an elaborate inclinometer-cum-slide rule, used to measure the altitude above the horizon of a celestial body. It can be used to identify stars or planets, to determine local latitude, to survey, and even determine your horoscope. The arrival, in the 17th-18th centuries, of accurate sextants and reliable portable chronometers rendered the astrolabe obsolete for navigation at sea, but it remains a fascinating and little-understood instrument. Our replica, in polished brass, sits in a wooden plinth and stands 18cm tall.



**4948 Astrolabe with Wooden Stand.**

## Armillary Spheres

The armillary sphere shows the Earth (a central ball) surrounded by rings (*armilla* in Latin) which represent the great circles of the heavens. It was widely used during the 17th and 18th centuries in scientific debates over the relative merits of the competing central Earth and central Sun theories. Our simplified, decorative brass versions make handsome ornaments for the desk or garden. Made from solid machined brass with an antique finish.

**4298 Armillary Sphere Paperweight.** Height 13cm.

**7298 Antique-style Armillary Sphere.** Height 30cm. With polished hardwood base.



4298



7298

## Calendar & World-time Set

50-year calendar and world-time indicator dials, displayed in a mahogany-stained wooden box with hinged lid. Box measures 8x6cm.

**4638 50-year Calendar with World Time, 8x5cm.**



## Greenwich Pocket Sundial & Compass

Inspired by Greenwich, the focal point of world time, this pocket sundial has its gnomon set for latitudes around 51°N, making it accurate when used in Greenwich as well as much of southern England as well as northern Europe, Canada and so on. Made from solid brass, diameter 7cm. Supplied with a velveteen drawstring pouch.

**7282 Brass Greenwich Pocket Sundial, 7cm.**

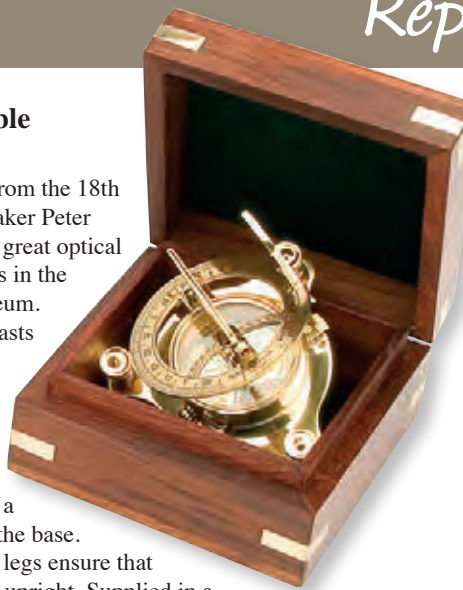




## Miniature Portable Dollond Sundial

Inspired by a design from the 18th century instrument maker Peter Dollond, founder of a great optical empire. The original is in the London Science Museum. The gnomon, which casts the shadow, can be set for latitude on a sliding scale; and the whole instrument oriented in the meridian by means of a magnetic compass in the base. The height-adjustable legs ensure that the instrument is used upright. Supplied in a box measuring 9cm square, 6cm tall.

**4559 Brass Sundial in Box, 9cm.**



## Portable Sundial

Although not intended for accurate timekeeping, our portable sundial is a complete, functional replica of an 18th-century design in which the gnomon, which casts the shadow, can be set for latitude on a sliding scale; and the whole instrument oriented in the meridian by means of a magnetic compass in the base. A spirit level and height-adjustable legs ensure that the instrument is used upright. This enabled the instrument to become a completely portable time-keeping device in an age before the pocket watch. Antique-effect case measures 9cm diameter.



**7295 Portable Sundial with Compass, Antique Finish, 9cm.**

## Brass Pocket Sundial

The gnomon on this pocket sundial is set for latitudes around 50°N, so will be most accurate in the south of England, northern Europe, Canada and so on. At these latitudes this is a functioning time indicator (in as much as sundials ever were!).

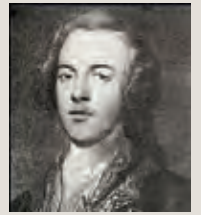
Diameter 7cm, height 3cm. Chunky solid brass.

**4568 Brass Pocket Sundial, 7cm.**



## Campbell Vernier Sextant

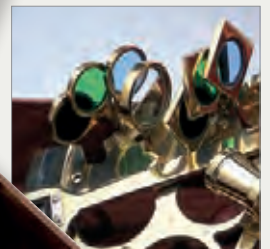
Our replica Sextant is dedicated to Royal Navy Captain John Campbell, who developed the instrument from its predecessor, the Octant, in 1757. Crucially his invention was close in time to that of accurate, portable chronometers, and it was the combination of the two which finally made navigation a science rather than guesswork, saving countless lives. This importance gave rise to the air of mystique which surrounds the instrument and its use, even in today's age of electronic wizardry.



## Campbell Vernier Sextant

Detailing is impressive, with hardwood handle and protective box, six shades of varying intensity, and a powerful telescope. Fully functioning parts but not intended for navigation. Instrument 20x17cm, box 23x23x13cm.

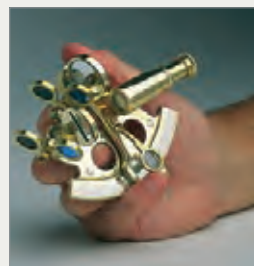
**4562 Campbell's Replica Vernier Sextant, 23cm.**



## Brass Sextant

Although not suitable for navigation, this replica brass sextant is a complete, functional example demonstrating the principles of how these instruments were made and used. Presented in a handsome polished hardwood and brass case measuring 14x8cm.

**15649 Brass Sextant, 14x8cm.**





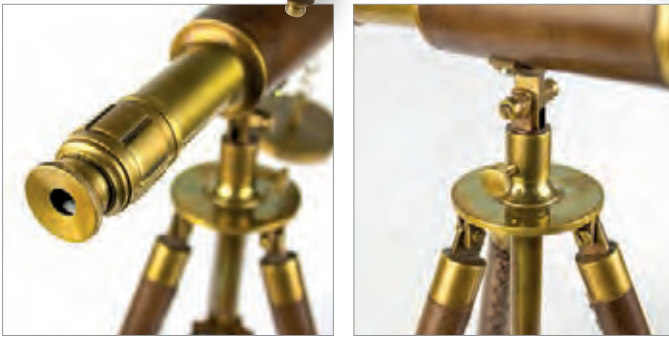
# Brass Telescopes

## Leather-bound Desk Telescope

The barrel and tripod of this telescope are bound in leather for an authentic-looking antique effect. The case is complete with sliding shade and lens cap, and offers 6x magnification and a 25mm object lens. Stands 36cm tall, barrel length 27cm.



7290 Leather-bound Desk Telescope, 27cm.



## Darwin Explorer Set

Named in honour of the famous naturalist and explorer, this handy set combines a magnifier, brass telescope (2.5x magnification), and compass, in a handsome glass-topped case measuring 17x12cm.



2930 Darwin Explorer Set, 17x12cm.



## Explorer Telescope

Antique-effect solid brass telescope, bound in leather and presented in a wooden box. 10x magnification. Box measures 18x6cm.

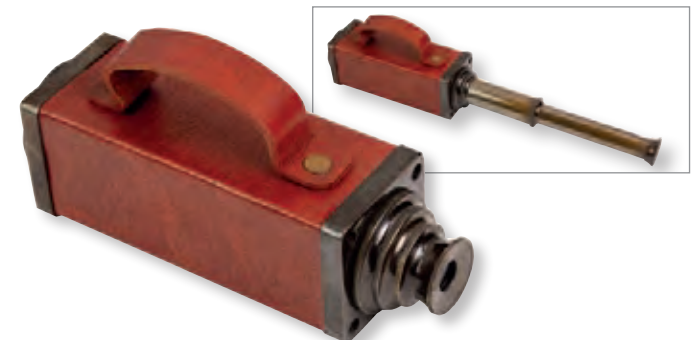


4511 Explorer Telescope with Box, 18cm.

## Square-cased Telescope

This three-draw telescope, made from solid antiqued brass and leather bound, is compact enough to fit in a desk drawer or your luggage, and its unusual square case means it won't roll off your chart table even in the stormiest of seas. Closed, it measures 16x5x5cm, extending to 38cm when open. It also offers a 25mm object lens with lens cap to protect against dirt and scratches. 5x magnification.

4219 Square Case Telescope.



## Alidade

The Alidade is commonly used in surveying, mapping, navigation, and astronomy; it enables the user to sight distant objects and measure angles with great precision. Our miniature desktop replica of a 19th-century design stands just 10cm tall and is manufactured from solid brass with compass, level, inclinometer, and telescope. Telescope extends to 12cm.

4218 Antique Finish Brass Alidade, 10cm.







**7166 Fleet Review Telescope.**

Adjustable Height 85-150cm

## Fleet Review Telescope

In the early 1900s grand cliff-top and beach homes would have been considered incomplete without an impressive brass telescope on the balcony. Our reproduction is elegant but also highly functional, magnifying 14 times with a large object lens of 50mm. Focusing is by finger-tip twist control, from about 40 metres to infinity. Barrel length 1m fully extended. The hardwood tripod can be adjusted for height from 85-150cm and has chunky solid brass fittings.



*Detail of twist-focusing mechanism*



*Chunky solid brass fittings*

## Cadet Pocket Telescope

This short-draw telescope is well balanced making it light and easy to use. Its 2.5x magnification makes it great for quick enlargement of things relatively close by, such as ships in a harbour, rather than high magnification, long distance work where a much longer, and thus heavier telescope would be required. Solid brass leather bound telescope presented in a polished wooden box with brass inlay corners and anchor motif. Telescope extends to 18cm, box measures 12x6cm.

**4598 Cadet Telescope**  
x2.5mag in Box.



**7289 Library Telescope, brass.**

## Elegant Brass Library Telescope

This classic Victorian design brass telescope will look fitting in any library, sitting room or conservatory. Solid brass barrel and fittings with an elegant turned Indian rosewood stand and delicately shaped legs. The legs fold inwards and the barrel can be removed for portability. Twist-barrel focus magnifying 12 times with an object lens of 35mm. Barrel length 52cm fully extended, height 45cm.

# Traditional Lamps

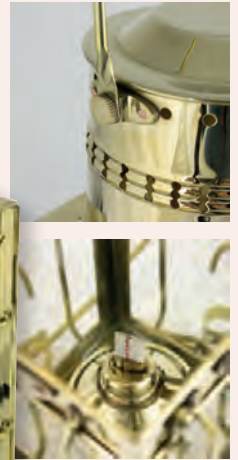


## Brass 'Chief' Cargo Lamp

A sturdy brass lamp that was, for years, the only approved lantern for use in cargo holds. It offers all-round illumination, with convenient fittings for suspending from ropes or wall brackets. Available in oil and electric options. Electric version requires an E14 25W bulb and is supplied with UK plug. Oil version also suitable for tea lights by removing burner unit.

**4059 Chief Cargo Oil Lamp, brass, 38cm.**

**4057 Chief Cargo Electric Lamp, brass.**

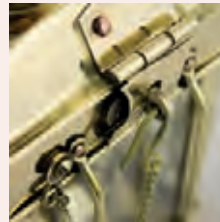


*12mm single wick burner*

## Square Cargo Oil Lamp

A sturdy brass lamp that was, for years, the only approved lantern for use in cargo holds. It offers all-round illumination, with convenient fittings for suspending from ropes or wall brackets. This oil lamp is also suitable for tealights with the burner unit removed. 25cm tall (excluding handle).

**4106 Brass Cargo Oil Lamp, 25cm.**



## Oil Miner's Lamp

The miner's safety lamp was designed by the mining engineering genius Sir Humphrey Davy, to withstand handling in arduous conditions. Sailors too have found their virtues invaluable: they are wind resistant and have quarter-inch (5mm) glass. Though illumination is limited, it is an ideal night light on boats which must conserve battery power. Measures 24cm tall. Polished brass and copper construction. Burn time 8hrs. Uses 4mm round wick oil burner.

**4120 Miner's Oil Lamp, 24cm.**

**8205 4mm Round Wick for Oil Lamps, 25cm.**



*Working oil burner*







## 'Nelson' Oil Lamp

The Nelson Lamp, made in brass, has a clear glass globe that takes its design from the dioptric lenses used on traditional oil-fuelled anchor lamps. This oil lamp is also suitable for tealights with the burner unit removed. 33cm tall (excluding handle).

**4105 Brass Nelson Oil Lamp, 33cm.**



## Dome-Topped Anchor Lamps

The Nauticalia anchor lamp - traditionally hung from the mast and able to burn all night to warn other vessels whilst at anchor - is made to the style still used by some international shipping as a reserve in case of electrical failure. Made from solid brass and copper with a dioptric glass lens, and the handles at top and bottom incorporate a rope fixing ring. The oil burner unit can be removed to allow use with a tealight if required. Measures 29cm tall.

**4145 Brass/Copper Anchor Oil Lamp, 29cm.**

## Navigation Lamps

Although not suitable for marine use, these replica ships' navigation lamps are functional. They are sturdily constructed in polished brass or anodised for an antique effect, with dioptric lenses and wall mounting brackets. Electric versions are supplied with UK plug and require E14 25W bulb.



**4068 Port Navigation Electric Lamp, brass, 21cm.**

**4069 Starboard Navigation Electric Lamp, brass, 21cm.**



**4168 Port Navigation Lamp, antique, 21cm.**

**4169 Starboard Navigation Lamp, antique, 21cm.**



## Ocean Explorer Globes

In the 16th-18th centuries, ocean pioneers were the celebrities of the age. Figures such as Drake, Magellan, and Cook discovered new lands, facilitated trade, and spread power and influence around the globe. Their reputation and achievements are so embedded in our history that they remain household names to this day. So when we sat down to name our new ranges of globes, these were the obvious choice. Metal fittings are antique or black finished plated aluminium. Wooden bases are steamed beech.



### Raleigh Globe

Sitting on a tall turned wooden pedestal and displays political mapping in vintage colours for an antique effect. 41cm tall.  
5992 Raleigh Globe, 20cm.



### Columbus Globe

Vintage colour mapping in political style, mounted in an armillary-type cradle with a compass for alignment. 28cm tall.

5991 Columbus Armillary Globe, 15cm.



### Amundsen Globe

Political-style mapping with bright colours contrasting with a black sea for a striking retro effect.

5990 Amundsen Globe, 25cm.



### Vespucci Globe

Political-style mapping in an antique sepia-toned effect.

5980 Vespucci Globe, 20cm.



### Cook Globe

Physical-style mapping, including ocean ridges, in full colour.

5983 Cook Globe, 20cm.

### Miniature Globe on Metal Stand

This 10cm globe offers a surprising amount of detail considering its small size. Measures 10cm.

6697 World Globe on Metal Stand, purple, 10cm.





## Globe Paperweight

Sitting in a sculpted hardwood base is a removable globe that is decorated in an antique style and is very detailed for its size. 12cm high.

**2931 Globe on Wooden Pedestal, 12cm.**



**5986 Drake Globe, 30cm.**



**5987 Drake Globe, 20cm.**



**5988 Drake Globe, 13cm.**

## Drake Globes

Political style mapping, sepia-toned to give an antique effect and mounted on a turned wooden pedestal.



## Shackleton Globe

Political-style mapping in muted colours to give a retro 1960s effect.

**5989 Shackleton Globe, 25cm.**



## Magellan Globes

Vintage colour mapping in political style, with a turned wooden pedestal.

**5984 Magellan Globe, 20cm. 5985 Magellan Globe, 13cm.**



## Marco Polo Globe

Aged-effect mapping in political style, resting freely on a turned wooden base.

**5981 Marco Polo Mini Globe, 13cm.**



## Vasco De Gama Globe

Political style mapping, sepia-toned to give an antique effect, resting freely on a turned wooden base.

**5982 Vasco De Gama Mini Globe 13cm.**

## Exploration Globe Set

Set of three globes, gift boxed, each with a different mapping style. Metal ring display stand supplied with each. Each 10cm diameter.

**2848 Exploration Globe, set of 3.**



# Naval-style Furniture & Games



New Lower Price!

## Naval-style Keybox

18 hooks (nine on door, nine inside compartment). Brass push/pull catch and doorknob. Measures 29x17x7cm.

**New Lower Price!**  
**7228 Naval-style Hardwood Keybox.**



## Dominoes Set

A full set of dominoes in a smart wooden box with brass inlaid corners. The box has a glass panel set in the top. Length 20cm.  
**4202 Naval-style Dominoes Set, 20cm.**

## Cribbage Set

The hinged lid and base fold out to create the scoring board, which is beautifully made from contrasting strips of light and dark wood. Folded size 13x9x5cm, opened length 26cm.

**New Lower Price!** **7203 Cribbage Set.**



New Lower Price!



## Naval-style Book Box

This lockable naval-style storage chest blends in discreetly with books on your shelf. Measures 14x21x6cm.  
**5397 Naval-style Book Box with Latch.**







### Tic-Tac-Toe

Wood pieces with brass tops. Measures 10cm square.

**New Lower Price!**  
7211 Wooden Tic Tac Toe Game.



### CARPET BOWLS

Derived from the legendary game played on Plymouth Hoe by Sir Francis Drake, conqueror of the Spanish Armada



Shoppers-on-Thames, England



### The Bowls Game that Delayed a Sea Battle...

That swashbuckling sailor Sir Francis Drake brought bowls into the nautical sphere in 1588 when, upon hearing of the approach of the Spanish Armada, he refused to set sail with the British Fleet until he had finished his game of Bowls on Plymouth Hoe. The truth was that the tide and wind were wrong for them to put to sea, so he had to wait - but it makes a great story! (Later, when conditions were right, he defeated the Armada by sailing burning ships into their fleet.) Whilst bowls normally require a green about 40m long, our mini carpet set can be played indoors with as little as 4m space. It consists of eight weighted and biased injection-moulded bowls of 5cm diameter, a white jack, and instructions. Simple to play, but skill shows - and enjoyed by all ages.

**New Lower Price!** 5692 Drakes Carpet Bowls.



### Noughts & Crosses

The classic game of noughts & crosses re-imagined in naval-style hardwood and brass with a glass-topped case measuring 12x12cm.

2932 Naval-style Noughts & Crosses Game, 12cm.



### Captain's Cabin Boxed Games Set

A full set of dominoes, two packs of cards, and five wooden die, in a very smart solid hardwood box with brass inlaid lid. Width 21cm, depth 18cm, height 5cm.

**New Lower Price!** 7202 Games Set with Dice/Dominoes/Cards.





**New Lower Price!**

## Curved-front Desk Tidy with Drawer

A brass anchor motif and diamond decorate this slimline desk tidy with drawer. 18x13x13cm.

**New Lower Price!**  
7259 Naval-Style Desk Tidy (Drawer), 13x18cm.

## Desk Tidy

Engraving plaque on front. Measures 20x16x13cm.

**New Lower Price!**  
7229 Naval-style Desk Tidy, 20cm.



**New Lower Price!**

## Magnifier & Letter Opener

Smart hinged box, lined with felt, opens to reveal a double magnification magnifier and accompanying letter opener. Brass Fleur de Lys inlaid in the lid. Measures 21x11cm.

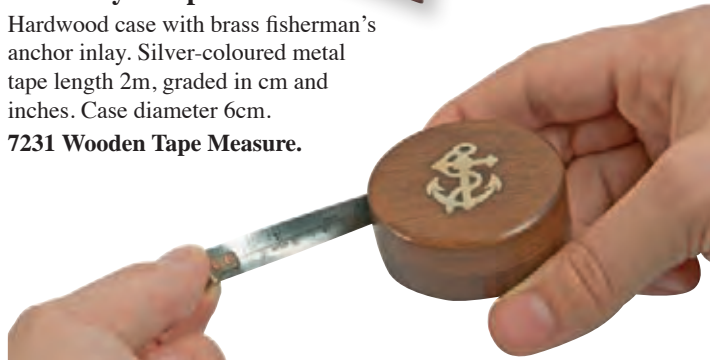
5732 Magnifier & Letter Opener in Box.



## Naval-style Tape Measure

Hardwood case with brass fisherman's anchor inlay. Silver-coloured metal tape length 2m, graded in cm and inches. Case diameter 6cm.

7231 Wooden Tape Measure.



## Bulldog Clip

The strong spring means you can securely clamp many ship's papers together. The finishing touch for any naval desk! Measures 7cm.

4514 Naval-style Bulldog Clip, 7cm.



## Perpetual Calendar Clock

Brass day, date, and month, mounted on wooden cubes to create any date. Neat watch-style clock mounted into the wood. Measures 22cm wide.

**New Lower Price!** 5730 Naval-Style Desk Clock & Calendar.

**New Lower Price!**

## Barrel-style Pen Holder

Made from solid hardwood with chunky brass bands. Height 10cm, diameter 7cm.

**New Lower Price!**  
7212 Naval-style Barrel Pen Pot.





## Naval-style Desk Furniture

Each item is made from polished hardwood with chunky solid brass hinges, corner pieces and fastenings. Only solid acacia is used (no plywood) for a quality appearance and finish, at surprisingly good value prices. All wood is from sustainable plantation sources.

### Barrel Money Box

Barrel-shaped money box with brass banding. Access to contents is via a screwed flap. Made from hardwood with brass banding and designed to take all current UK and Euro coins.

*New Lower Price!*  
7230 Naval-style "Crew" Barrel Money Box, 13cm.



### Money Box Treasure Chest

A miniature brass padlock keeps your money safe from passing pirates! Slot designed to take all UK and Euro coins. Measures 14x8x7cm.

*New Lower Price!*  
7208 Naval Chest Money Box with Lock, 14x8cm.



### Good Luck Horseshoe

Sailors often carry 'Good Luck' tokens and symbols to protect them from the potential perils of the seas. This polished brass horseshoe comes in a wooden box with a four-leaf clover, another lucky symbol, inlaid in the lid. Measures 11cm.



*New Lower Price!* 5734 "Good Luck" Horseshoe in Wooden Box, 11cm.



### Treasure Chest Money Box

Keep your treasure safe from plunder in this miniature wooden chest made from pine, complete with padlock and key. Measures 14x9x9cm.

15134 Wooden Treasure Chest, 14x9x9cm.



### Desk Chests

Treasure chests for your desk or den. Hinged lid with brass inlaid strapping and fisherman's anchor motif. Two sizes.



*New Lower Price!*

7204

*New Lower Price!*  
7204 Treasure Chest Anchor, 10x5x4cm.

*New Lower Price!*  
7214 Naval-style Treasure Chest with Anchor, 18cm.



7214

### Naval-style Trinket Box

Solid wood box with hand-inlaid brass anchor feature. Measures 8x5cm.

4205 Naval-style Box (Anchor), 8cm.



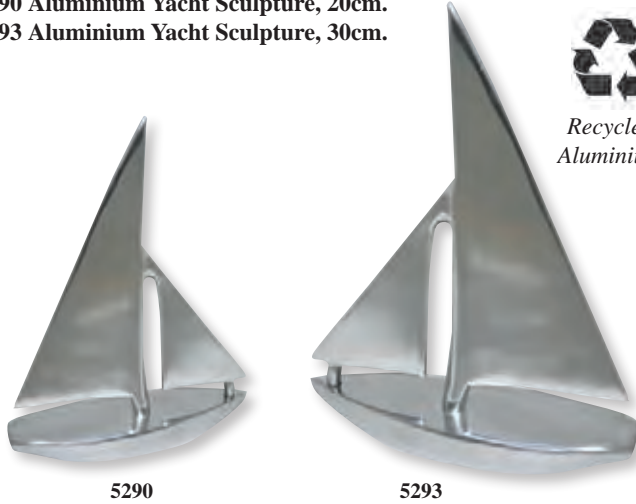




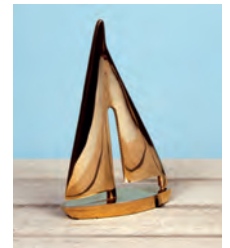
## Ornamental Yacht Sculptures

Boldly sculptured in solid brass or polished aluminium, these counter-sterned, sloop-rigged yachts make stunning ornaments. The subtle curves of their sails pick up light and reflections from surrounding objects to make constantly changing patterns.

5290 Aluminium Yacht Sculpture, 20cm.  
5293 Aluminium Yacht Sculpture, 30cm.



Recycled  
Aluminium



7286

7287 Brass Yacht, 14x23cm.  
7286 Brass Yacht, 10x15cm.

5290

5293

7287



2929 Brass  
Shoehorn with  
Anchor, 48cm.



15656

15656 Brass  
Sand Timer,  
3 Minutes,  
8cm.



15657

15657 Brass  
and Marble  
Sand Timer,  
3 Minutes,  
13cm.



## The Original Paratrooper's 'Cricket'

The ACME No. 470 Clicker, or 'Cricket' as it became known, was conceived in the 1920s as a time-keeping device for musicians, but was adopted in 1944 by US paratroopers who needed a way of discreetly identifying friendly forces after landing behind enemy lines at night. 7,000 were supplied ahead of the D-Day invasion, very few of which now survive and are expensive antiques. Our authentic replica is made in the UK by the same company, on the actual tooling and machines used in 1944. It is superb quality and almost indistinguishable from the originals. Nowadays, they also serve as a useful dog training aid. Supplied wartime-style cardboard box with certificate of authenticity.

1944 ACME No.470 Clicker.





4935

4936

4937

## Brass Porthole Mirrors

Elegant mirrors set into highly polished cast brass porthole frames. The screw fittings are operational enabling them to be used as interesting hatches for cupboards, walls or doors.

**4935 Brass Porthole Mirror, 15cm.**

**4936 Brass Porthole Mirror, 20cm.**

**4937 Brass Porthole Mirror, 30cm.**



## Pewter Porthole Mirrors

The chunky aluminium porthole frames on these mirrors have a pewter colour coating which is less polished than our brass and chrome ones for an authentic, and slightly aged, look. The openings are operational, so could be used as cupboard doors or hatches for example.



4351

4352

4353

**4351 Aluminium Porthole Mirror, dark pewter, 46cm.**

**4352 Aluminium Porthole Mirror, dark pewter, 38cm.**

**4353 Aluminium Porthole Mirror, dark pewter, 30cm.**

## Brass Signs

These chunky signs have been sand cast in the traditional manner from solid brass, then polished to a high shine.



**15682 Brass Plaque Captain, 17x3.5cm.**



**15680 Brass Plaque, "England Expects...", 10cm.** Admiral Lord Nelson's famous signal at the Battle of Trafalgar.



**15681 Brass Plaque Admiral, 19x3.5cm.**



**15685 Brass Plaque Toilet, 16x3.5cm.**



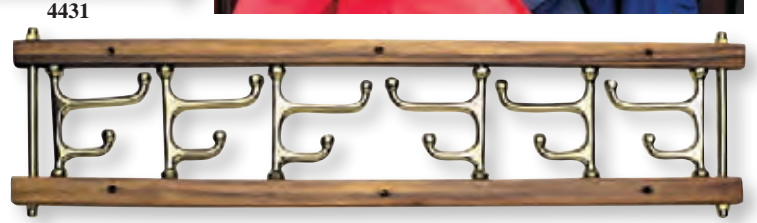
## Fold Away Hooks

Our hardwood and brass hooks have the safety feature that, in the folded position, they are recessed within their frame, posing no risk of injury to persons falling against them. Smart, but strong enough to support hefty wet oilskins.

**4432 2-way Folding Hook.** Length 16cm, height 11cm.

**4433 4-way Folding Hook.** Length 28cm, height 11cm.

**4431 6-way Folding Hook.** Length 40cm, height 11cm.



**4283 Brass Ship's Wheel Keyrack (6).**

**4285 Brass Anchor-style Hook.** Fouled anchor in polished solid brass with a single strong coat hook. 10x6cm. Weight 42g.



**4286 Brass Anchor-style Hook.** 22x12cm. Weight 234g.

## Swivelling Coat Hooks

Hooks that fold away are invaluable where space is precious. These all-brass hooks are sturdy with independently swivelling arms.

**4287 Brass Swivelling Hook (3).** Height 8cm, projection 10cm.

**4430 4-way Folding Hook.** Height and projection 14cm.



## Rope Fittings

Smart polished-brass or chrome-plated fittings suitable for attaching companionway, staircase, or barrier ropes of up to 25mm diameter.

**4501 Brass Supporting End Eye Plate.**

**4502 Chrome Supporting End Eye Plate.**

**4503 Brass End Hook.**

**4504 Chrome End Hook.**

**4507 Brass Centre bracket.** (with retaining screw).

**4508 Chrome Centre bracket.** (with retaining screw).





# Books & Construction Kits



## Creative Ropecraft Book

Creative Ropecraft is a wonderful collection of practical nautical knots and decorative ropework. Anyone tempted to try their hand at this will be able to follow the steps easily, thanks to Stuart Grainger's exquisite and clear drawings and colour photographs. Learn how to tie and use a wide variety of knots, both practical and elaborate, including: Crown and wall knots, Turk's heads, Door knockers, Hammocks, Belts, and much more. 144 pages, softback.

**4359 Creative Ropecraft Book.**

## 50 Knots For Every Adventure

Be prepared for your next escapade with this handy guide to the world of knots. Included are all the essential knots you need to know, plus more advanced ties, so you'll be all set for whatever you're planning. Find your adventure by location: The Woods, covering all your camping needs; The Sea, for nautical outings both big and small; The Mountains, for all types of climbing and hiking; and Everywhere Else – for the adventure of life! Every knot is accompanied by clear step-by-step instructions and artworks, making this a resource you'll turn to time and time again. Plus, the book comes with two pieces of rope so that you can begin mastering the knot techniques right away. 96 pages, hardback.

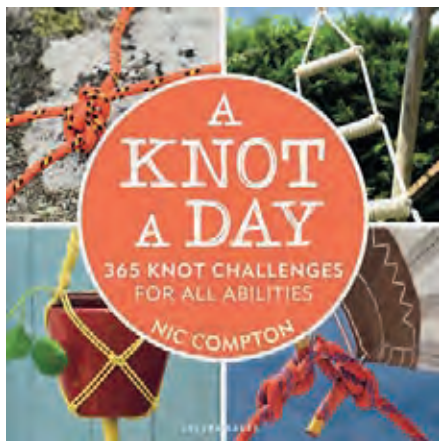
**4358 50 Knots For Every Adventure Book.**



## Sea Shanties Book

Pull up anchor, set sail and hit the open water with this wonderful collection of sea shanties and their fascinating history. People have been singing at sea since they first set sail and sea shanties still fascinate and entertain. Composed and performed by sailors to ensure the rhythmic operation of hauling and heaving tasks aboard huge merchant vessels, the songs also boosted camaraderie, positivity and motivation. Life at sea was harsh and relentless, and these songs brought some much-needed energy and humour. This bountiful book brings together over 50 of the best-loved ballads and explores their history, alongside stunning black and white illustrations. 192 pages. Hardback.

**4354 Sea Shanties Book.**



## 365 Knots Book

This beautifully-produced compendium gives you a knot challenge for every day of the year, including: essential knots, bends and hitches; craft projects such as keyrings, belts, and plant hangers; magic tricks and escapology knots; and fashion knots for your tie or shoelaces. There are hundreds to choose from, all colour coded by use and guided by step-by-step colour photographs and illustrations. You can work through the book from start to finish, gradually building on your knowledge as you go, or alternatively dip in and out for your daily knotting fix. Give it a month and you'll be a knot tying fanatic; give it a year and you'll be a knotting supremo! 368 pages, softback.

**4342 A Knot A Day - 365 Knots Book.**



## Apache Construction Kit

This construction kit includes all the metal parts, nuts & bolts, tools, and easy-to-follow instructions to build an Apache Helicopter. Designed to be a satisfying challenge for engineers aged 8 and over, the pieces also compatible with other brands.

**Clearance! DEM0905 Haynes Apache Helicopter Construction Set.**

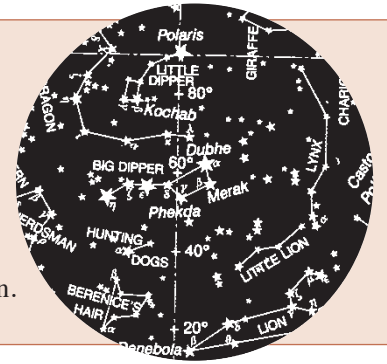


£  
CLEARANCE  
PRICE



## Star Identifiers

These simple, low-cost instruments have successfully introduced thousands of people to the fascination of studying the night sky. Dials around the outside of the barrel are set to the hour and date required, and the stars and constellations visible at the time are shown on an accurate, computer-generated disc within. The star map can be referred to through the focusing viewfinder with one eye, whilst observing the real night sky with the other, making identification quick and easy. Both include latitude compensation rings, northern and southern hemisphere mapping and night illumination.



### Pocket Star Identifier

15cm long, with integrated compass for alignment. Supplied with storage bag.

**7072 Pocket Star Identifier.**



*Press button to illuminate map*



### Stellarscope

19cm long, 4cm viewing map.

**7070 Stellarscope.**



## Radiometers

These curious and mesmerising instruments measure the power of electromagnetic radiation. Made from a glass bulb with much of the air removed to form a partial vacuum, inside is a set of fine metal vanes, each with one dark and one light side, mounted on a spindle. The vanes rotate, as if by magic, when exposed to sunlight, artificial light, or infrared radiation (even the heat of a hand nearby can be enough) – the more intense the light, the faster the rotation.



*Vanes rotate in sunlight*



7688

7687



**Clearance! 7687 Radiometer, clear, 20cm.**

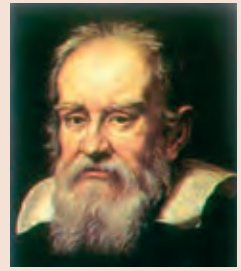
**Clearance! 7688 Radiometer, blue base, 20cm.**



# Galileo Thermometers

## Galileo Thermometers

These fascinating instruments work on the principle that liquids change density with temperature, as discovered by Italian astronomer Galileo Galilei in the 17th Century. As the liquid in the glass tube is warmed or cooled by the air around it, the coloured globes rise or sink, as their relative densities vary, indicating room temperature by the engraved brass tag on the lowest of the floating globes. Very competitively priced, they are excellent value. With long tubes and more globes than others on the market, there is more activity to watch in the mid-size and large models. They are also easier to read, as temperatures are indicated in steps of one degree instead of two. Bases are wide and heavy for stability.



Galileo Galilei  
(1564-1642)



Detail of globe showing temperature label in degrees Celsius (centigrade).



24560 Galileo Thermometer, 44cm.

24561 Galileo Thermometer, blue, 44cm.

7085 7-Globe Galileo, multi, 43cm.

7084 5-Globe Galileo, multi, 34cm.

24562 Galileo Thermometer, 30cm.

24563 Galileo Thermometer, blue, 30cm.

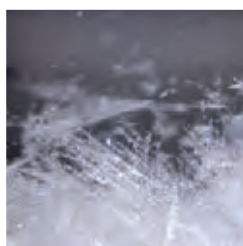
7096 5-Globe Galileo, multi, 28cm.

24564 Galileo Thermometer, 18cm.





**6504 Galileo Storm Bottle Weather Station.**



*Changing crystals predict weather patterns*



**24566 Galileo Thermometer on Metal Stand, 24cm.**



**7095 Teardrop Galileo Thermometer, 11cm.**

**24568 Bullet Shape Galileo Thermometer, 15cm.**

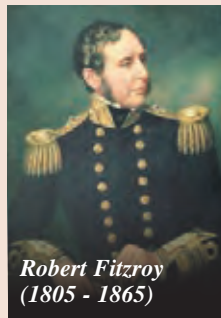
**24570 Tear Drop Galileo Thermometer, large, 16.5cm.**

# Storm Bottles

## Storm Bottle

Aboard *HMS Beagle* during the Darwin Expeditions of 1831-36, Captain Robert Fitzroy developed and refined the 18th century storm bottle. This involved much testing and observation, and resulted in him being able to make a number of weather predictions with a fair(ish) degree of accuracy. Changes in the crystals that form inside can indicate even subtle changes in the weather. However, even after almost 200 years, no one is quite sure how the storm bottle works. Is it atmospheric pressure? Temperature?

Electrical disturbances? And it's this element of uncertainty, of almost magical alchemy, that makes these storm bottles so fascinating. Supplied with Fitzroy's observations - will you agree with them or find new interpretations?



Robert Fitzroy  
(1805 - 1865)



HMS Beagle



Changing crystals predict weather patterns

7034 Storm Bottle, 16cm.



24575 Storm Glass on Tapered Wooden Base, 14cm.



7686 Storm Cloud, 13cm.



Clearance!  
7140 Storm Globe, 11cm.



## Our Best-loved Aircraft Sculpted in Aluminium

From 'vintage' to state-of-the-art, many aircraft have become part of our national heritage – their triumphs, revolutionary engineering achievements, and even beauty earning them a place in our hearts. These impressive sculptures of some of the most iconic have been cast in solid aluminium and polished to a high sheen such that their subtle curves and angles catch the light. The larger models are substantial pieces; each will require a suitable display space, but will look simply spectacular in the right location.



### English Electric Lightning – the ultimate Cold War interceptor

A pair of mighty Rolls Royce Avon engines, in a distinctive vertical stack configuration, propelled the English Electric Lightning to speeds exceeding Mach 2, and it could even break the sound barrier in a vertical climb. It was conceived to protect the country, and specifically the V-bomber bases that housed our nuclear deterrent at the time, from a pre-emptive Soviet air strike. However, such incredible performance consumed huge amounts of fuel which consequently limited the range, making it difficult to find alternative roles for the Lightning as the original threats diminished. The final Lightning was retired from service in 1988.



**New! 3527**  
**Aluminium**  
**English Electric**  
**Lightning**  
**Sculpture, 30cm.**

### Hawker Hurricane – the unsung hero of the Battle of Britain

Whilst the Supermarine Spitfire became the icon of the Battle of Britain, the Hawker Hurricane actually accounted for a higher number of enemy aircraft shot down; around 60 to 65 percent. They were the backbone of RAF Fighter Command at the time, having been manufactured in greater numbers than the Spitfire, and having entered into service a year earlier. Although the slightly slower aircraft, the Hurricane was robustly constructed, easy to maintain, and carried impressive firepower.



**New! 3529**  
**Aluminium**  
**Hawker Hurricane**  
**Sculpture, 15cm.**



**New! 3528**  
**Aluminium**  
**Hawker**  
**Hurricane**  
**Sculpture, 25cm.**

# Aluminium Aircraft Sculptures



**3526 Aluminium  
DC3 Dakota  
Sculpture, 23cm.**



**3525 Aluminium  
DC3 Dakota  
Sculpture, 30cm.**



## **Douglas DC-3/C-47 Skytrain**

First flown in 1935, the Douglas DC-3, lovingly known by the British as the Dakota, revolutionised commercial aviation – accounting for 80% of the world's airline traffic by 1940. Thanks to a combination of capacity, speed, range, and economical operation the DC-3 finally made passenger travel profitable for airlines. These same qualities suited military use with the aircraft, designated C-47, providing the backbone of the Allies' transport efforts throughout the second world war – most notably delivering paratroopers and towing gliders during the D-Day landings. Around 11,000 were built, and some can still be found in service around the world today.

## **Supermarine Spitfire**

Developed in 1938 from a Schneider trophy-winning design by the aeronautical engineer and designer R.J Mitchell, the Supermarine Spitfire became the hero of the Battle of Britain in the summer of 1940. Spitfires remained in service until 1961 – well into the jet age – by which time more than 20,000 had been produced.



**3521  
Aluminium  
Spitfire  
Sculpture,  
80cm.**



**3510  
Aluminium  
Spitfire  
Sculpture,  
13cm.**



**3511  
Aluminium  
Spitfire  
Sculpture,  
21cm.**



**3512  
Aluminium  
Spitfire  
Sculpture,  
29cm.**



# Aluminium Aircraft Sculptures



**3523 Aluminium Concorde Sculpture, 71cm.**

## Concorde

The dream of a future where people would travel the world at twice the speed of sound became a reality when Concorde made her first test flight on 2 March 1969, and 'went supersonic' on 1 October the same year. She then entered service with British Airways and Air France in 1976 and took her final commercial flight on 24 October 2003, having completed more than 50,000 flights.



**3522 Aluminium Concorde Sculpture, 40cm.**



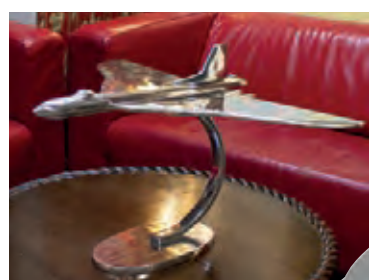
**3517 Aluminium Concorde Sculpture, 16cm.**



**3518 Aluminium Concorde Sculpture, 32cm.**

## Avro Vulcan

The enormous delta-winged Avro Vulcan was designed as the mainstay of the V-bomber fleet - our Cold War nuclear deterrent. However, its finest hour was arguably the audacious long-range 'Black Buck' raids of the Falklands conflict. The Vulcan served from 1956 until October 2015, when the last example (XH558) was withdrawn from service and restored to become a much-loved highlight of air shows and displays. Instantly recognisable, seeing (and hearing!) one in flight was an experience not to be forgotten. Sadly, even XH558 no longer flies - the task of keeping her in an airworthy condition proving insurmountable.



Recycled Aluminium



**3520 Aluminium Vulcan Sculpture, 21cm.**



**3524 Aluminium Vulcan Sculpture, 77cm wingspan.**



**3519 Aluminium Vulcan Sculpture, 13cm.**

# HMS Victory Models, Boxes & Puzzles



## HMS Victory

Designed by Sir Thomas Slade, and launched in 1765, *HMS Victory* was the ultimate Georgian warship - armed with 102 guns plus two carronades in the fo'c'sle, she displaced approximately 3,500 tons and carried a crew of about 850. She remains the oldest commissioned warship in the world, and is still manned by the Royal Navy. Her most famous action was against Napoleon and the combined French and Spanish fleets at the Battle of Trafalgar in 1805, under the command of Admiral Lord Nelson. The battle was won by the English, but Lord Nelson was tragically killed by a sniper's bullet. It was decided that *HMS Victory* should be preserved as a lasting reminder of the Royal Navy's supremacy in the days of sail. Today, *HMS Victory* attracts over 350,000 visitors each year to her Portsmouth Historic Dockyard home.

*Please note these products are not linked to the National Museum of the Royal Navy*



**New!**



## Nelson's Flagship HMS Victory Model

This museum-quality model is made entirely from wood with cotton sails and extensive rigging, and measures 60cm long and 46cm high.

**New! 7630 Nelson's Flagship HMS Victory Ship Model, 60cm.**



See *HMS Victory Ships-in-Bottles* on pages 54-55

**New! 3098 David Bell HMS Victory pot rest.** Measures 16x16cm and is backed with a non-slip and non-scratch EVA foam.



**New! 15602 David Bell HMS Victory box.** Measures 15x10cm.

**New! 1514 Nelson's Navy by David Bell 1,000-piece Puzzle.**





# HMS Victory & HMS Warrior Models



14183 HMS Victory, large, 46x46cm.



14181 HMS Victory on Stand 33x33cm.



14163 HMS Victory, mini, 20x20cm.

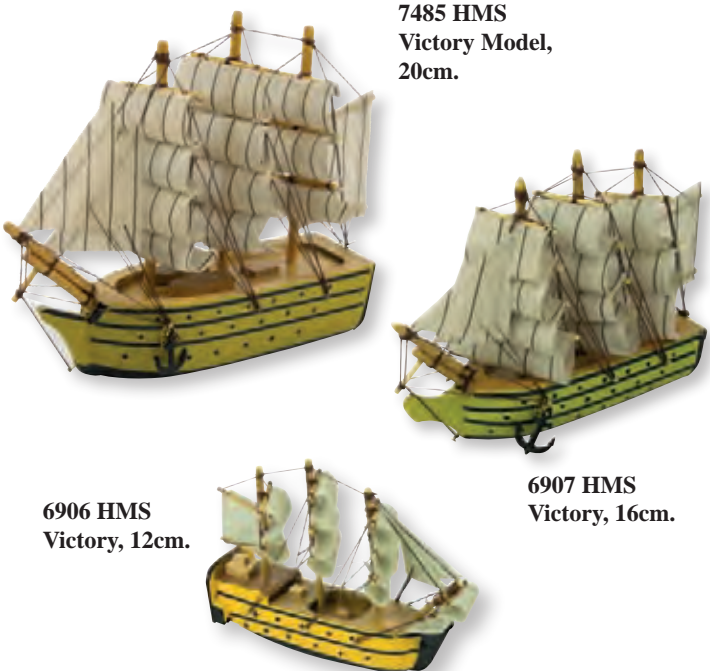


14189V Flat Bottom Victory, Micro, 12cm.

## HMS Warrior

Budget-priced display model with solid wood hull construction, canvas sails, and reasonably detailed rigging.

7543 HMS Warrior, 33cm.



7485 HMS Victory Model, 20cm.

6906 HMS Victory, 12cm.

6907 HMS Victory, 16cm.





# Cutty Sark Models

## Cutty Sark Models

*Cutty Sark* is the world's last intact clipper ship, now preserved in a spectacular dry dock at Greenwich, London. Long, lean, and beautiful, she was built in 1869 for the tea trade but made redundant by the completion of the Suez Canal, which made steam ships more economic. Instead, she earned her living, and incredible reputation for speed, in the long-distance wool trade from Australia. Handmade in the traditional manner, these models feature wooden hulls and cotton sails and rigging.



### Tea Clipper Cutty Sark

This museum-quality model is made entirely from wood with plank-on-frame construction, cotton sails, and extensive rigging. She measures 52cm long and 33cm high.

**New! 7631 Tea Clipper Cutty Sark, 52cm.**



14195 Cutty Sark, Mini, 20x20cm.



14191 Cutty Sark, small, 24x22cm.

### Cutty Sark Premium Ship-in-Bottle

Handmade in the traditional manner, featuring a wooden hull, cotton sails and rigging, and a rope-bound stopper. Measures 14cm long.

**2995 Cutty Sark Ship in Bottle, 14cm.**



14192 Cutty Sark, Medium, 32x30cm.



14193 Cutty Sark, large, 46x38cm.





## Mayflower Models - 400 Years on From Her Historical Voyage

In the autumn of 1620, a group of English and Dutch puritans, believing that the Church had strayed too far from Christ's teachings, set out to establish a colony in the New World where they could practice their religion free from persecution. With 102 pilgrims and around 30 crew on board, *Mayflower* departed Plymouth for what is now New England on a voyage that would last two months in treacherous conditions. This journey has become an iconic chapter in American history, and our models pay tribute to the ship which remains a popular historic symbol today. They are budget-priced and offer an all-wood construction with canvas sails.

- 7538 Mayflower, 20cm.
- 7539 Mayflower, 33cm.
- 7544 Mayflower Model, 10cm.



14156 Mayflower, small, 33x33cm.



## Mayflower Premium Ship-in-Bottle

Handmade in the traditional manner, featuring a wooden hull, cotton sails and rigging, and a rope-bound stopper. Measures 14cm long.

2991 Mayflower Ship in Bottle 14cm.

## SS Great Britain

Designed by Victorian engineering genius Isambard Kingdom Brunel, and launched in July 1843, *SS Great Britain* was by far the largest and most advanced passenger ship of her day, offering a sail and steam-powered transatlantic crossing in only 14 days. In 1970, she was returned to the Bristol dry dock where she was built 127 years earlier, and remains there today as a museum ship welcoming 150,000-200,000 visitors annually.



14108 SS Great Britain, 24cm.

See *SS Great Britain Ships-in-Bottles* on page 55



14105 SS Great Britain, 20x18cm.



# Historic Model Ships



14158 Discovery, 33x33cm.



14168 Golden Hind, 20x20cm.



14160 Discovery, 20x20cm.



14120 Pirate Ship, black, 20x20cm.



14144 Titanic, 20x16cm.



14065 3 Mast Yacht, 60x58cm.



## Wooden Boat Display Models

Made to a high standard with plank-on-frame hull construction with highly-detailed deck and interior. Features include adjustable rigging, sewn cotton sails and brass fittings.

### Gaff-rigged Sailing Yacht

Features include steering cockpit and detailed cabin roof with rails and Dorade skylights. Length 60cm.

**6593 Gaff-rigged Yacht with Cabin, 60cm.**



### Bluenose with Painted Hull Finish

*Bluenose* was a Canadian fishing and racing schooner from Nova Scotia, built in 1921. She became a provincial icon for Nova Scotia as well as an important Canadian symbol in the 1930s. The name 'bluenose' originated as a nickname for Nova Scotians from as early as the 18th century. Highly-detailed model with the hull painted in a high gloss finish. Length 80cm.

**6687 Bluenose Yacht, 80cm.**

### Brixham Trawler

Mid-19th century fishing vessel from Devon, typically about 20 metres (65ft) long, whose hull form is still copied today for its outstanding sea-worthiness and handling characteristics. Gaff ketch rig with contrasting breton red and cream sails. Length 52cm, height 49cm, beam 11cm.



### Traditional Fishing Trawler

Traditional fishing trawler complete with nets and deck details such as buckets and life rings. Length 25cm.

**6902 Trawler, red/white/blue, 25cm.**



**7433 Brixham Trawler, 52cm.**



## Weathered-finish Display Yacht

Display yacht with a hull carved from a solid block of wood and painted in a distressed style to give an aged and weathered appearance.

**6587 Yacht with Distressed Hull, white, 30cm.**



## Racing Yacht Model

Based on a modern racing yacht design, with a blue and white hull.

**6904 Racing Yacht, 30cm.**



## Mini America's Cup Yacht

Chunky wooden model yacht in the style of the great J-class racing yachts of the 1930s.

**6901 America's Cup Yacht, cream, 26cm.**

## Clyde Puffer

Stumpy little steam-powered cargo ships like these were once a familiar sight around the west coast of Scotland, providing an essential supply link ferrying goods and coal around the islands - their flat bottoms allowing them to beach and unload in places that lacked suitable piers. Although only a handful remain in service today, they are instantly recognised and much loved thanks largely to the short stories by Neil Munro about *Vital Spark* and her captain Para Handy. Length 20cm.

**6905 Clyde Puffer Model, 20cm.**



## Sailing Skiff Model

Delightful miniature wooden skiff with single lateen sail and deck detail including bench seats and life ring. Length 10cm.

**1112 Skiff, 10cm.**



## Rowing Skiff

Clinker plank-on-frame skiff with elegantly-curved sheer, and two rowing stations. Equipment includes four removable oars, a lifebelt and fishing gear. Length 30cm, beam 10cm.

**New Lower Price! 7425 Two-man Skiff, 30cm.**





14046B J Class Endeavour, 67x51cm.



14022 Sail Boat with Oars, 22x22cm.



14063 Lulworth Style Yacht, 65x72cm.



14040 J-Class Yacht, 42x60cm.



14041 Varnished Yacht Bowsprit, 80x94cm.



14044 J Class, 36x52cm, 2 assorted.



14046 J Class Enterprise, 67x51cm.



14057 Colombia, 60x60cm.



14068 Yacht 25cm with LED Lights.



14209 Fishing Boat, Miniature, 7x7cm, 5 assorted.



14210 Fishing Boat, small, 10x8cm, 5 assorted.



14211 Fishing Boat, Medium, 12x10cm, 5 assorted.



14213 Mini Trawler with Hanging Nets, 13x8cm, 6 ass.



14217 Trawler Assortment, 16cm, 3 assorted.



14220 Trawler Assortment, 14x15cm, 3 assorted.



14224 Blue Trawler with Hanging Nets, 30x27cm.



14239 Distressed Finish Trawler Asst, 24cm x22cm, 3 assorted.





14240 Trawler 20cm with LED Lights, 4 assorted.

## Canal Boats



14396A Working Canal Boat "Small Ferret", 20cm.



14396C Leisure Canal Boat "Small Mallard", 20cm.



14396D Leisure Canal Boat, "Small Kingfisher", 20cm.



14396E Canal Boat, "Mendip", 20cm.



14399A Mini Canal Boat, Working Version 10cm.



14399B Mini Canal Boat, Leisure Version, 10cm.



21605A Canal Boat Magnet, Working Boat, 7cm.



21605B Canal Boat Magnet, Leisure Boat, 7cm.



# *Ships-in-Bottles*

## **Ships-in-Bottles**

Handmade in the traditional manner, these ships-in-bottles combine wooden hulls with cloth sails and extensive rigging. Mounted on wooden stands with nameplates.



### **Ships-in-Bottles. 9cm.**



2158 HMS Victory



2159 Cutty Sark



2160 Bounty



2161 Mayflower



2162 Endeavour



2163 HMS Victory



2165 Cutty Sark



2166 Endeavour



2167 Mayflower

### **Ships-in-Bottles. 14cm.**



2168 HMS Victory



2169 Endeavour



2178 Mayflower



2171 Bounty Ship-in-Bottle, 16cm.



*All these models feature extensive rigging & detailed sails*

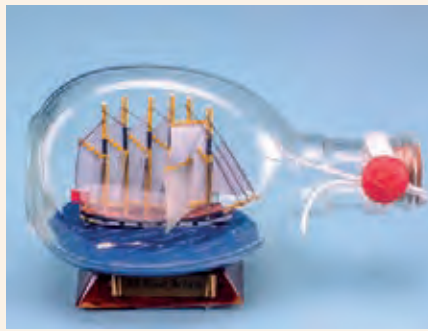


*Wax and string seal*





**15198A SS Great Britain in Globe with Ribbon, 7cm.**



**15198B SS Great Britain in Dimple Bottle, 9x15cm.**



**15198C SS Great Britain in Dimple Bottle, 12x17cm.**



**15200 Wooden Ship in Bottle, small, 7cm.**



**15201 Ship in Globe with Ribbon, 7cm.**



**15202 Wooden Ship in Dimple Bottle, sml, 13cm.**



**15205 Victory in Dimple Bottle, 15cm.**



**15205C Cutty Sark in Dimple Bottle 15cm.**



**15206C Mini Cutty Sark Ship in Dimple Bottle, 9cm.**



**15207 Pirate Ship in Mini Dimple Bottle, 9cm.**



**15209 Cutty Sark in Triangular Bottle, 12cm.**



**15212 Ship in Round Upright Bottle, 14cm.**



**15214 Ship in Small Round Bottle, 10cm, 4 assorted.**



New for  
2025

# Art by David Bell



1514



1515



1516



Reverse

## About the Artist

David C Bell was born in Lincolnshire. After attending Trinity House Navigation School in Hull, David embarked upon a career at sea as a navigating cadet in the Merchant Navy. Having spent time at sea drawing and painting, he felt his true course in life was to paint full-time. So, after nine years sailing around the world as a ship's navigator, he left the sea to become an art student. After gaining a B.A. in Art, David set about fulfilling his ambition as a marine artist and has since produced works across a broad spectrum of maritime subjects. He later moved on to produce work that encompassed his other passions of steam locomotion and aviation. He has a considerable portfolio of work across all three subject areas.



## Jigsaw Puzzles

Journey back in time to the golden age of steam or Nelson-era naval battles, with some of David Bell's most atmospheric works reproduced on these 1000-piece jigsaw puzzles. Each measures 48x68cm when complete.

**New! 1514 Nelson's Navy**

**New! 1515 Battle of the Nile**

**New! 1516 Launch Day Buckler's Hard**

**New! 1517 Sir William Stanier**

**New! 1518 Flying Scotsman at York Shed**



1517



1518



## Trinket Boxes

Trinket boxes for your loose change, jewellery, or phone charger cables. Measures 15x10cm.

**New! 15600 David Bell Agamemnon at Portsmouth**

**New! 15601 David Bell Cutty Sark off Deal**

**New! 15602 David Bell HMS Victory**

**New! 15603 David Bell Red Boat at Staithes**



**New!**



15600



15601



15602



15603




See more Trinket Boxes  
on page 132 & 161



## Pot Rests

These ceramic trivets will protect your worktops and tables from being damaged by hot pots and pans. Each measures 16x16cm and is backed with a non-slip and non-scratch EVA foam.

**New! 3098 David Bell HMS Victory**  
**New! 3112 David Bell Red Boat at Staithes**

 See more Pot Rests on page 63



3098



3112



## Ocean Explorer Tablemats

A tribute to the great ocean explorers; Scott, Shackleton, Cook, and Bligh, this set of tablemats features the ships that carried them on their famous voyages. Each tablemat features one of six ships in full sail, with a brief history below. Cork-backed and heat-resistant to 100°C. Boxed sets of six. Measures 29x21cm.

**4346 Ocean Explorer Tablemats (6).**

## Steam Train Tablemats

Featuring reproductions of paintings by renowned railway artist David Bell, our range of tablemats shows six of the most iconic steam locomotives set in historically accurate locations. *Flying Scotsman* and *Mallard* steaming out of King's Cross. *Sir William Stanier* at Euston. *Oliver Cromwell*, *Bocastle* and *Cock O' the North* make up this impressive set. The tablemats have brief narratives giving the locomotive's backgrounds and their significance. Cork-backed and heat-resistant to 100°C. Boxed sets of six. Measures 29x21cm.

**4330 Steam Train Tablemats (6).**



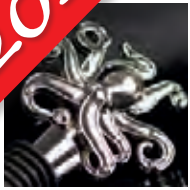


**New for  
2025**

# Nautical Drinkware

## Nautical Bottle Stoppers

Keep your opened wine or spirits fresher for longer, with these elegant nautical-design bottle stoppers. Cast from metal, with food-grade rubber seals, sizes range from 11-13cm.



51840



51841



51842



51843



51844



51845



*New!* 51840 Mermaid Bottle Stopper  
*New!* 51841 Seahorse Bottle Stopper  
*New!* 51842 Lobster Bottle Stopper  
*New!* 51843 Yacht Bottle Stopper  
*New!* 51844 Starfish/Shell Bottle Stopper  
*New!* 51845 Octopus Bottle Stopper

## Campfire-style Mugs are Back!

Updated, re-sourced, and priced lower than the previous versions, our best-selling 'campfire style' crew mugs are back. They are designed to look like the enamelled tin types you used to take camping, but are made from fine china so they won't cool down so quickly, burn your hands, or leave that infamous taste! They are bright white with a contrasting dark blue rim and choice of nautical phrases or crew rank, and supplied individually gift boxed. Dishwasher and microwave safe. Height 9cm, diameter 8cm. Capacity 275ml.



6241



6242



6243

*New!* 6241 Crew Mug - Skipper  
*New!* 6242 Crew Mug - Captain  
*New!* 6243 Crew Mug - First Mate  
*New!* 6244 Crew Mug - Crew  
*New!* 6245 Crew Mug - Grumpy Old Man  
*New!* 6246 Crew Mug - Ancient Mariner



6244



6245



6246



## Glass Ship in Bottle Decanter

Yo ho ho and a bottle of rum, whisky, vodka, or whatever else splices your mainbrace. The classic ship in a bottle conundrum is given an update with this handmade glass decanter to display your favourite tippie. The decanter holds a full 75cl bottle and comes complete with cork and glass stopper for authenticity, and a wood display stand. Measures 27cm long.

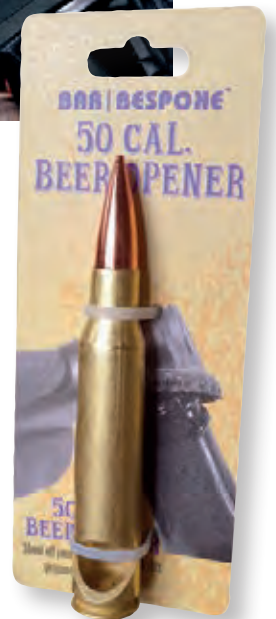
**New! 2814 Ship in a Bottle Decanter.**



## Whose round is it?

What was it they used to say in the trenches? If it's got your number on it... Happily this 50 calibre shell has been expertly decommissioned, polished to a mirror finish (it'll reflect an RSM's bristling moustache) and crafted into a novel yet highly efficient bottle opener. The perfect excuse for cracking open a bottle or two of 'Old Sledgehammer' or whatever tickles your palate. A gift guaranteed to hit the target every time. Length 14cm.

**New! 2813 50 Calibre Bullet Bottle Opener.**



## Drink all the Whisky in the World...

Now that's a serious challenge. But not quite as reckless as it first appears. You see, the world in question is this strikingly handsome globe-shaped decanter. It's handblown from borosilicate glass, and includes a blown-glass ship in the centre. Easily removed for pouring and passing around (it's wonderfully satisfying to hold), the decanter has a glass ball stopper with an airtight seal - in case you don't finish the contents in one sitting. Presented in a smart gift box. Capacity 75cl.

**New! 2815 Gold Globe Ship Decanter.**



# Pewter-Mounted Drinkware

## Pocket Flasks with Pewter Badge and Funnel

These stainless steel pocket flasks are badged with an intricately-detailed pewter emblem – choose from yacht or fouled anchor – which is made, by hand, in Sheffield, the home of British pewter craftsmanship. Capacity 175ml (6oz). Measures 4½" tall. Supplied gift boxed with funnel for easy filling. Hand-wash in warm soapy water.



**2304 Stainless Steel Pocket Flask with Pewter Anchor Badge.**

**2305 Stainless Steel Pocket Flask with Pewter Yacht Badge.**



2965

2966



**2965 Shot Glass with Pewter Base and Anchor Badge.**

**2966 Shot Glass with Pewter Base and Yacht Badge.**

## Pewter-Mounted Tankards

An ideal gift for those who like their pint served in a sturdy tankard, these beer glasses are mounted in a hallmarked lead-free pewter base and finished with your choice of intricately-detailed pewter emblem. They are still made, by hand, in Sheffield, the home of British pewter craftsmanship. Capacity 450ml. Hand wash in warm soapy water.

**2960 Glass Tankard with Pewter Base and Anchor Badge**

**2961 Glass Tankard with Pewter Base and Yacht Badge**

**2962 Glass Tankard with Pewter Base and Stag Badge**

**2963 Glass Tankard with Pewter Base and Salmon Badge**

**2964 Glass Tankard with Pewter Base and Grouse Badge**



2960

2961



2962

2963

2964





**New!**



2951



2952



2953



2954



2955



- New!** 2951 Whisky Tumbler Spitfire Badge
- 2952 Whisky Tumbler with Stag Badge
- 2953 Whisky Tumbler with Salmon Badge
- 2954 Whisky Tumbler with Yacht Badge
- 2955 Whisky Tumbler with Fouled Anchor Badge
- 2956 Whisky Tumbler with Grouse Badge
- New!** 2967 Whisky Tumbler Skull & Crossbones Badge
- New!** 2968 Whisky Tumbler Swordfish Badge



2956



2967



2968



2957



2958



## Tasting Glasses

The distinctive bulbous middle and narrow opening of the tasting glass is designed to allow air to release the aromas from your wine or spirit and then concentrate them at the top of the glass, helping you to appreciate complex flavours. Ours have a choice of pewter emblem depicting a fouled anchor or sailing yacht and each arrives gift boxed. Capacity 185ml. Measures 10cm tall. Hand wash in warm soapy water.

- 2957 Taster Glass with Pewter Anchor Badge
- 2958 Taster Glass with Pewter Yacht Badge

## Gin Glasses

With its large opening and distinct shape, the Copa de Balon is a modern Gin glass which allows you to smell the botanicals with every sip. And there is plenty of space for larger ice cubes, which will keep your drink chilled for longer and not dilute it. Ours have a choice of pewter emblem depicting a fouled anchor or sailing yacht and each arrives gift boxed. Capacity 560ml. Measures 20cm tall. Hand wash in warm soapy water.

- 2959 Gin Glass with Pewter Anchor Badge
- 2909 Gin Glass with Pewter Yacht Badge



2959



2909



# Nautical Drinkware

## Royal Navy Glasses Show Rank

Keep track of who's who, and whose drink is whose, with these smart engraved glass tumblers – helps avoid confusion between daughter's lemonade and Dad's gin and tonic! The additional decoration is derived from the emblems used on the sleeves of Royal Naval uniforms. Dishwasher safe, capacity 260ml each.



2186 First Mate Whisky Tumbler  
2187 Skipper Whisky Tumbler  
2188 Crew Whisky Tumbler

## Plimsoll Line Glass

Samuel Plimsoll, MP, is remembered for his safe load waterline mark, introduced to prevent unscrupulous shipping owners from overloading their ships and so taking excessive risks with the lives of their crews. It is now found on all commercial ships worldwide. We have commissioned an attractive whisky glass, handsomely etched with his image and the Plimsoll line, in this case used to mark the "safe load" for a generous helping of spirit. Capacity 160ml to line.

2184 Plimsoll Line Whisky Tumbler 220ml.



Whisky not included!



## Raise a Glass... and a smile!

Whether for a boating-themed party, a gift for those hard-to-buy for 'Yachties', or simply keeping track of which drink is whose on board, this range of fun nautical drinkware with jaunty blue and gold designs are sure to raise a smile. Cheers! Not suitable for microwave or dishwasher.



5882 "First Mate"  
Tin Mug. Capacity 530ml.

5884 "Ancient Mariner"  
Tin Mug. Capacity 530ml.

5885 "Seas The Day"  
Tin Mug. Capacity 530ml.



5879 "Work like a Captain"  
Tumbler.  
Individually gift boxed.  
Capacity 235ml.

## Bottoms Up! Crew Shot Glasses

Adding a little fun to our Crew range, these shot glasses are printed with our most popular ranks and messages in an informal nautical style. Smart Eurosot packaging makes them perfect impulse-buy gifts. Hand-wash only.



52711 Skipper  
52712 First Mate  
52713 Ancient Mariner  
52714 Party Like a Pirate  
52715 Bottoms Up!  
52716 Cheers!



78069 Beach  
Mug, 450ml.

Ceramic

78070 Seagull  
Mug, 250ml.



78070



# Chopping Boards

## Wooden Boards

These wooden boards, printed with some of our favourite nautical designs, are ideal for use as chopping boards, serving platters, or just décor. Made from sustainable Rubberwood, and finished with food-safe print and lacquer, each measures 34x16cm.



4012



4013



4014



4015



4016



4017



3080



## Pot Rests

These ceramic trivets will protect your worktops and tables from being damaged by hot pots and pans. Each measures 16x16cm and is backed with a non-slip and non-scratch EVA foam.

3080 Nautical Knots Trivet Pot Rest

3081 Seas The Day Trivet Pot Rest

3082 International Code Flags Trivet Pot Rest



3081



3082



# Bottle Openers & Tableware

## Wall-mounted Bottle Opener

Solid brass bottle opener with raised anchor design and two mounting holes for secure attachment to a wall or bulkhead. An accessory that can be appreciated (and is useful) in a multitude of locations, and won't get lost! Height 9cm, width 6cm.



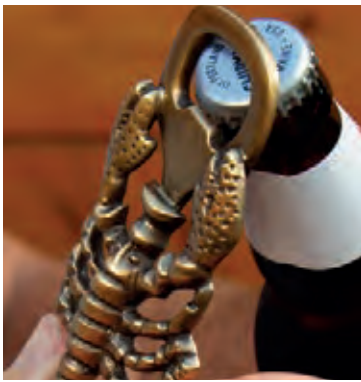
**4387 Wall Mounted Bottle Opener.**

## Anchor Bottle Opener & Corkscrew

Bottle cap remover and corkscrew in one. The flukes of the anchor give a good purchase on stubborn corks. Chunky polished brass castings with stainless steel 'worm' (corkscrew thread). Length 15cm.

**New Lower Price! 7297 Anchor-shaped Bottle Opener & Corkscrew, 15cm.**

New Lower Price!



**7292 Lobster Bottle Opener, Antique Finish.**



**3820 Whale Bottle Opener, brass, 19cm.**

## Brass Trivets

Nautical themed solid brass pot rests, with non-slip and non-scratch rubber feet, to protect your dining table and kitchen worktops from hot and heavy pans. Measures 19x19cm.

**4224 Brass Starfish Trivet.**

**4225 Brass Lobster Trivet.**

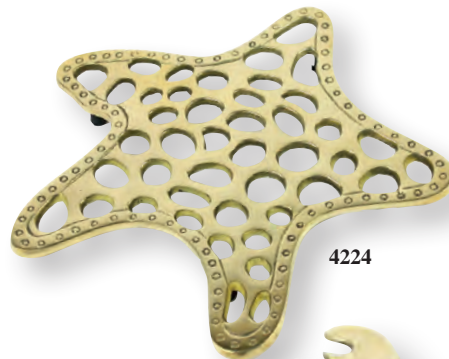
## Bottle Openers

Practical brass openers. Length 14cm.

**4382 Ship's Wheel Bottle Opener.**



**4386 Anchor-style Bottle Opener.**



4224



4225





## Copper Grog Mug

Holding 375ml, it's much larger than our traditional rum measure (right). Perfect for the daily ration of Grog perhaps?  
**2928 Copper Measure, 375ml.**



## Naval Rum Measure - Half Gill

The Royal Naval rum was measured in half-gill tots and variously diluted, often into a two-gill (half-pint) measure. Our measures are made in the time-honoured way - from skilfully hand-beaten brass, copper-plated, polished, then lined with silver to neutralise taste. The bases are etched with the prestigious HMS logo. One supplied. Height 5cm.

**4700 Copper Half-Gill Rum Measure.**



*Prestigious HMS logo etched underneath*



*Measurement marker on the side*

## Mini Tot Tankard

Solid brass tankards inlaid with a copper anchor emblem. An ideal rum tot measure.

**5335 Mini Tot Tankard, 5cm.**



## Brass & Copper Drinkware

Presented in polished hardwood & brass cases, these miniature tankard and whisky shot sets are machined from solid brass with a copper anchor emblem.



**15658 Set of 2 Mini Tankards in Wooden Presentation Box 15x8cm.**



**15663 Set of 2 Whisky Shots in Presentation Box, 11x7cm.**

# Cobb Outdoor Cooking System



## Cobb Premier AIR

The Cobb Premier AIR offers a host of improvements and upgrades aimed at making cooking easier and your food taste even better. Just like the original Cobb, it's incredibly fuel efficient, versatile, and remains cool to the touch on the outside, so you can safely use it on board, in the garden, or on a picnic. On top of that, improved airflow makes it easier to control cooking temperature, thicker gauge stainless steel enhances durability so it will last longer, removable ash pan makes it easier to clean, and it's all backwards-compatible to allow continued use of Cobb accessories and fuel.

## Cobb Premier AIR

Comes with a carrying/storage bag. Measures 13" tall, 12" diameter. Also available is the Cobb frying pan & wok set, which is specially designed for use with the Cobb, tough stainless steel construction. Cobblestones fuel available for Cobb.

3034 Cobb Premier AIR cooker & bag.



## Cobb Features:

- Stays **Cool-to-the-touch** on the outside. So it can be used on a wooden table, fibreglass deck, or your lawn without causing damage.
- **Doesn't smoke** - food is isolated from the charcoal, so fat does not drip onto it and flare.
- Can be used as a **Charcoal oven** - delicious pizza cooked in just 15 minutes!
- Only needs six briquettes to **Cook for up to 3½ hours** or one Cobblestone (see below) burns for 2½hrs - maximum heat from minimum fuel.
- Is **Easy to clean & long-lasting** - all dishwasher safe.



**Open** When fully opened the charcoal can draw more air allowing internal temperature to rise



**Closed** When closed the air flow is reduced allowing the charcoal to burn slower and reduce the temperature



Cook with coals or Cobblestones



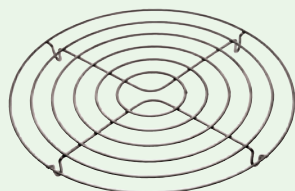
## Cobb Premier Accessories



99128 Cobb Wok.



99127 Cobb Frying Pan.



3123 Roast rack for Cobb cooker.



97419 Cobb Griddle Plus.

## Cobb Cobblestones

Cobblestones are specially shaped to fill the fuel compartment of your Cobb barbecues, and formulated to burn hotter and longer than charcoal of the same size/weight. They are environment-friendly too, being made from coconut shells. Each stone burns for up to 2hrs (smoke-free after the first three minutes), with very little residue. They are individually plastic-wrapped, so won't absorb moisture if you keep them in a soggy locker and nor will they turn everything black.

99093 Cobblestones, Pack of 6.



Fits the fuel compartment perfectly



## Designed to fit!

The unique rectangular Boaties frying pan ingeniously solves the problem of fitting a decent-sized pan onto the hob of most recreational boats' compact cookers, and it even allows for a kettle alongside on double burner hobs. At 25x20cm, it offers the maximum cooking area – more, in fact, than a 25cm round pan – and the sloping end allows for easy and safe pouring of liquids, whilst the heatproof silicone handle is raised to clear most retaining rails. The straight 4cm sides allow the pan to be stored standing on its side – making efficient use of precious storage space. It's made of sturdy 3mm aluminium, for even heat transfer, with a stainless steel base, making it suitable for gas, electric, ceramic and induction hobs, and it is finished with a durable non-stick coating for easy cleaning and long life.



3070

**New!**

**New! 3070 Boaties Rectangular Frying Pan.**

**New! 3072 Lid for Boaties Frying Pan.**



3072



3071

**New! 3071 Boaties Rectangular Baking Pan. Measures 31x21x6cm.**



*Removable handle*

## 'Unbreakable' Stacking Mugs (Set of Four)

Labelled according to rank, these sturdy plastic mugs come in sets of four, one each for the Captain, First Mate, Cabin Boy and Crew – and feature the Nauticalia ship-in-bottle logo. For hot and cold drinks and are dishwasher safe. Capacity 245ml.

**6102 Mugs - stackable (4), red, 245ml.**

**6103 Mugs - stackable (4), blue, 245ml.**



## 'Unbreakable' Stacking Mugs (Individual)

These sturdy 'unbreakable' plastic mugs are stackable for convenient storage - ideal on board your boat, caravan, or camping. They can be used for hot and cold drinks and are dishwasher safe. 245ml capacity.



**6104 Skipper Mug, Red**

**6105 Captain Mug Red**

**6108 Crew Mug, Red**

**6112 Chief Cook Mug, Red**

**6160 Skipper Mug, Blue**

**6161 Captain Mug, Blue**

**6164 Crew Mug, Blue**

**6168 Chief Cook, Mug, Blue**



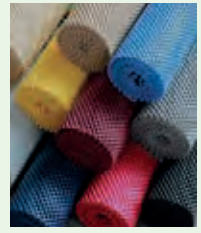


# Non-slip Matting



## StayPut Non-Slip Matting Products

The range of uses for non-slip matting aboard boats, caravans, and in kitchens and workshops is huge, and these items are amongst our top sellers. The fabric is made from non-slip foam which is melded onto a polyester mesh. The unique manufacturing process produces a hardwearing fabric which is not sticky or stretchy, but grips on both sides. It is durable, with an attractive open-weave structure that allows air to circulate - perfect for marine environments. It is washable, easily cut to shape, and available in a range of colours.



## Multi-purpose Non-slip Matting

Available in ten colours, these rolls of StayPut non-slip matting are simple to cut and sew, so can be used in an enormous variety of applications. Rolls are supplied in convenient 30x182cm or 51x182cm sizes, or bulk (30cmx55m) rolls that are easy to cut and sell by the metre. Codes for each size and colour are shown in the table below.

**Fabric Rolls 30x182cm.**

**Fabric Rolls 51x182cm.**

**Bulk Rolls 30cmx30m.**

Colour	Pearl White	Almond	Taupe	Electric Blue	Indigo	Forest Green	Black	Red	Grey
<b>Fabric Rolls 30x182cm</b>	3206	3202	3201	3205	3200	3203	3204	3198	3197
<b>Fabric Rolls 51x182cm</b>	3210	3212	3211	3215	3216	3213	3214	3209	3208
<b>Bulk Rolls 30cmx30m</b>			3222		3228	3224	3229		3219

## Placemats and Coasters Sets

Using the same StayPut fabric as the multi-purpose rolls (above), the placemats are pre-cut rectangles with rounded corners. At 30x40cm, they are ideally-sized for protecting tabletops, and preventing items slipping on trays or dashboards. Placemats are sold in sets of six placemats and six 10cm circular coasters. Codes for each colour are shown in the table below.

**Mat & Coaster Sets.**



Colour	Pearl White	Almond	Taupe	Electric Blue	Indigo	Grey
<b>Mat &amp; Coaster Sets</b>	3230	3232	3235	3234	3231	3239



3273 Clear Placemat/Coaster Set. 6 of each.

## Clear PVC Placemats and Coasters

Using a food-grade clear PVC, these mats and coasters are just as good at preventing slips as our other non-slip placemats. Heat-resistant to 60°C and waterproof, they can protect delicate surfaces. Placemats are 30x20cm, coasters are 9cm diameter.

**3275 PVC Placemats - singles.**

**3276 PVC Coasters - singles.**







3263



3264

**Mould-resistant Mats  
Make Your Shower Safer**

A cushioned non-slip mat is essential in a bath or shower to ensure a safe footing, but they often attract unsightly mildew. These ones are impregnated throughout (not just coated) with a silver-based technology which inhibits the growth of bacteria and mould, yet is completely safe for humans. Free draining and machine washable, and independently tested to the new Slip Resistant standard BS8445:2012.

**3263 Antimicrobial Bathmat.** 43x90cm.

**3264 Antimicrobial Shower Mat.** 50x50cm.

**3265 Antimicrobial Shower Mat Quadrant.** 60x60cm.



3265

**Stow-away Silicone Trivet**

When space is at a premium, every square inch counts, and with this folding silicone trivet you can safely use a table or work surface for your hot pans and it stows away easily afterwards. Silicone is also naturally non-slip – a crucial advantage on-board – and easily washable. Measures just 22cm (closed).



3268



3269

**3268 Silicone Folding Trivet - Green.**

**3269 Silicone Folding Trivet - Purple.**

**Display  
Stands for  
Non-slip  
Matting**

Our display stands make the most of valuable retail space and help you sell more mats. All are FREE when you stock in full – call us on +44 (0)1932 244396 to discuss.



**Twister Grips/Coasters**

These are 14cm discs of StayPut non-slip matting, supplied in packs of 4, which give you the extra grip necessary for getting stubborn tops off jars and bottles. Black only.

**3270 Stay Put Twister caps (4).**



**Flexible Spirit Level - Works Around Curves & Corners**

Developed, designed and manufactured in Germany with an almost obsessional degree of accuracy, it's essentially a 70cm spirit level with six precisely engineered joints. So it can be used through right angles, curves, corners, as well as around columns and decorative features. Made from high-density, non-marking polymer with a magnetic base and unbreakable, adjustable acrylic vials. Unlike others it can fold to fit better in a tool bag. Whether you're a DIY novice or a fully qualified professional, this is a tool kit essential. 70cm long.

**91761 Flexible Spirit Level, 70cm, black.**





## Folding Dishrack

A dishrack would be so handy on board, but where to stow it? Easy with this one because it folds up into itself, measuring just 30x20x5cm. It has room for 13 plates or bowls, with side areas for cutlery and glasses. An integral drip tray keeps worktops dry.

**3440 Folding Dishrack.**



Closed for storage

## Floating Keyrings

Our floating cork keyrings are available with red or green ropes for port and starboard (e.g. twin engines) and have saved many red faces.

**4453 Floating Cork Sphere Keyring.**

**4477 Champagne Cork Keyring.**



**4527 Cork with Triple Ball.**



## Environmentally-friendly Muggi Range

The 'modern classic' Muggi design has been around for a few years now, enabling sailors to safely carry hot drinks single-handed (vital when you need your other hand to hold on!) and not slip when you put it down. The non-absorbent material is durable, easy to clean, and insulates to keep your drinks warmer (or cooler) for longer. Even if you're not a round-the-world yachtsman, it's equally useful in the garden, workshop, caravan, or campsite. Now the range has just become much more eco-friendly too - all new Muggis are entirely made from recycled materials, and can be recycled themselves, reducing the amount of plastic waste finding its way into the environment.



6007

## Recycled and recyclable - keeping plastic bottles out of landfill

The red and blue versions are made from post-consumer recycled plastic - those plastic bottles you put in your recycling - keeping it out of landfill and the environment.



6006



**6006 Recycled Muggi Mug Holder, red.**

**6007 Recycled Muggi Mug Holder, blue.**

## Made from Recycled Plastic Waste Recovered from the Sea

The green version uses exactly the same design to hold your mugs, glasses, or bottles securely in the four moulded slots, but it is made entirely from recycled plastic waste that has been recovered from the world's oceans - fishing nets, rope, bottles etc - much of it recovered off the Cornish coast. Without doubt, it's the 'greenest' Muggi ever!



6005

**6005 Recycled Ocean Plastic Muggi Mug Holder, green.**

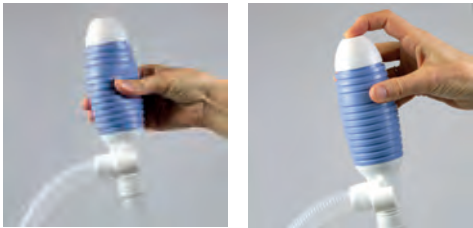




## Easy-start Syphon Pump

When syphoning liquids from one container to another, particularly toxic or unpleasant ones, the difficult part is generating the suction necessary to start the flow. This simple, lightweight hand-operated pump will do the job for you in seconds, with no batteries, and deliver up to 12 litres per minute. It's suitable for water, fuel, paraffin, cleaning products, and chemicals (except corrosive chemicals). The rigid inlet pipe, which can be poked through narrow hatches and fuel cans, is 40cm long and the flexible outlet is 60cm long.

**3279 Easy-start Syphon Pump.**



## The Foghorn That Never Runs Out

Besides being louder than most of its competitors, EcoBlast is powered entirely by compressed air, meaning that it never needs refills and is 100% environmentally friendly. The cylinder can be recharged either by using the mini hand pump supplied, or a tyre inflation compressor. 20cm tall, horn length 16cm.

**3119 EcoBlast Foghorn.**



## Handy, Lightweight, Battery-powered Pumps

Perfect for emptying out those last dregs in the bilge, transferring fuel, or emptying water tanks or aquariums, these battery-powered lightweight portable pumps have solid 45cm intake pipes that can be poked into awkward spaces, through narrow inspection hatches, or into Jerry cans. Both are suitable for use with: water, petrol, paraffin, diesel, cleaning products, and light oils. Requires 2xD batteries (not included).



## Standard Version

- Pumps 10-litres per minute
- 80cm outlet hose
- No filter

**3285 Battery-operated Handy Pump.**



## Upgraded Version

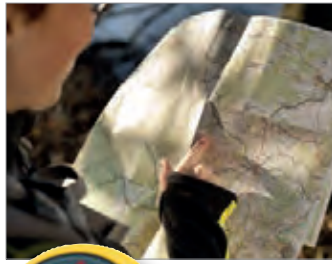
- Pumps 9-litres per minute
- Included 2-stage filter prevents pump becoming clogged
- Longer, 1.7m, outlet hose with separate nozzle trigger
- Storage hook can be used when setting up a semi-permanent installation - i.e. in a water butt

**3286 Battery-operated Handy Pump with Filter & Hose.**

**3287 Replacement Filter for Battery-operated Pumps.**







## Digital Compass/ Barometer/Altimeter

This feature-packed little instrument fits easily into a pocket so you'll always have easy access to: Digital Compass, Altimeter, Barometer with weather forecasting function, Time, Date, and Alarm. Backlit LED screen.

**3152 Digital Compass/  
Barometer/Altimeter.**



## Handheld Windspeed Indicator

For sailors, walkers, or amateur meteorologists, this pocket-sized digital instrument offers accurate wind speed, temperature, and windchill information at a glance. It's very quick and simple to use, water resistant, and includes a back-lit LCD screen for night-time use. Uses one CR2032 battery (included). Measures 10x4cm.

**3156 Anemometer, digital.**



## Pirate Flag

Made from lightweight 100% polyester and printed right through. The edge is protected by a stiff white braid, with two brass eyelets for halyard attachments. 45x30cm.

**6215 Flag - pirate, 45x30cm.**



## Code Flag Bunting

Traditionally, code flags or international signal flags are used by ships at sea individually to spell out short messages or in combinations with special meanings. Our code flag bunting includes 40 code flags (letters of the alphabet, numbers 0-9, and three signal flags). Made from colourful, lightweight polyester, it is intended for decorative use around your home, office, garden or boat! 15 metres.

**6159 Code Flag Bunting, 15m.**

## Union Flags

Made from high-quality rot-resistant polyester. Hanging couldn't be easier with a reinforced hem and metal eyelets. These Union flags are ideal for royal occasions, sporting events and street parties Available in three sizes.

**New Lower Price! 6057 Union Flag, 60x90cm.**

**New Lower Price! 6058 Union Flag, 90x150cm.**

**New Lower Price! 6059 Union Flag, 120x180cm.**





## Nauticalia Maritime Flags

A collection of the most popular flags for maritime use – Red Ensigns, code flags, and flags of various European countries – made from high-quality rot-resistant polyester with cord loop at the top and tail at the bottom. Available in great-value printed versions, with the larger Red Ensigns also available as heavy duty sewn versions. Supplied in individual blister packs with euroslots.



## Red Ensign

- 5800 Red Ensign Sewn Flag. ¾ yard (68x34cm)
- 5801 Red Ensign Sewn Flag. 1 yard (90x45cm)
- 5803 Red Ensign Sewn Flag. 1½ yard (137x68cm)
- 5804 Red Ensign Sewn Flag. 2 yard (183x91cm)
- 5805 Red Ensign Printed Flag. ½ yard (45x22cm)
- 5806 Red Ensign Printed Flag. ¾ yard (68x34cm)
- 5807 Red Ensign Printed Flag. 1 yard (90x45cm)



Jersey Ensign



Guernsey Ensign

- 5798 Jersey Ensign Flag. ½ yard (45x22cm)
- 5799 Guernsey Ensign ½ yard (45x22cm)

## Courtesy Flags (30x45cm)



5844 Devon Flag



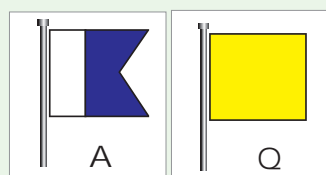
5855 Cornwall Flag

## Code Flags

The most commonly-used code flags, available individually so you don't need to buy a full set. 30x45cm.

**5820 Code Flag A**  
(I have a diver down/keep clear).

**5821 Code Flag Q** (To request customs clearance on arrival in a foreign port)

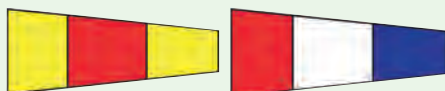


5820

5821

## Numerals

- 5845 Code Flag 0
- 5846 Code Flag 1
- 5847 Code Flag 2
- 5848 Code Flag 3
- 5849 Code Flag 4
- 5850 Code Flag 5
- 5851 Code Flag 6
- 5852 Code Flag 7
- 5853 Code Flag 8
- 5854 Code Flag 9



5845

5848



5849

5854

## 5835 Welsh Dragon



## 5822 Brittany/Breton Flag

## 5823 Cyprus/Cypriot Flag

## 5824 EU Flag

## 5825 France/French Flag

## 5826 Greece/Greek Flag

## 5827 Guernsey Flag

## 5828 Italy/Italian Flag

## 5829 Eire/Irish Flag

## 5830 Portugal/Portuguese Flag

## 5831 Jersey Flag

## 5832 Spain/Spanish Flag

## 5833 St George's Cross Flag

## 5834 Scotland/Scottish Lion Flag

## 5835 Wales/Welsh Dragon Flag

## 5836 Normandy Flag

## 5837 Turkey/Turkish Flag

## 5839 Holland/Netherlands Flag

## 5840 Belgium/Belgian Flag

## 5841 Germany/German Flag

## 5842 Sweden/Swedish Flag

## 5843 Alderney Flag

## New! 5844 Devon Flag

## New! 5855 Cornwall Flag

## 5833 St George's Cross



## Gorilla Tough – Incredibly Strong Glue & Tape

Gorilla is the best-selling range of waterproof adhesives from America, now available from Nauticalia. The compact display stand (which is free when you stock in full) allows you to make the most of every precious square metre of floor space in-store – a must for busy chandleries. See display on page 76.

### Gorilla Tape

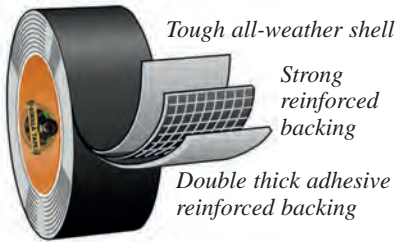
Legendary Gorilla sticking power in a tough woven tape that grips even rough surfaces.

**2582 Gorilla Tape.** 11m.

**2583 Gorilla Tape.** 32m.

**2584 Gorilla Tough Wide Tape.**

73mmx27m.



2582



2583



2584



### Gorilla Duct Tape

32 Metres of high-strength 48mm Gorilla tape with a silver finish – the ideal choice for ducting and metallic applications.

**2557 Gorilla Duct Tape.**  
32m.



### Gorilla All-Weather Extreme Tape

Uses the same tough cloth and backing as standard Gorilla Tape, but with an all-weather adhesive that holds strong in rain, snow, and sun. It's the best choice for permanent outdoor repairs in extreme conditions, and even sticks to wet surfaces.

**2562 Gorilla All-Weather Extreme Tape.** 11m.

### Gorilla Tack

Use Gorilla Tack for mounting light objects such as posters, paintings, lights, ribbons, and other objects up to 1Kg onto a wall or similar surface. It is non-toxic and safe for use on paper, painted walls, wood, tile, metal, posters, plastic, glass etc. It is removable, reusable and long-lasting, and is supplied pre-cut into 84 squares for convenience.

**2614 Gorilla Tack.**



### Gorilla Crystal Clear Waterproof Repair Tape

Ideal for all sorts of repairs. It will also create an airtight, waterproof patch – perfect for inflatables.

**2586 Gorilla Clear Waterproof Repair Tape.** 8.2m.

**2589 Gorilla Crystal Clear Waterproof Repair Tape on Clipstrip of 6.** Supplied on a clipstrip of 6 units, so must be ordered in multiples of 6. Priced individually.



Retail display strip

### Gorilla Waterproof Patch & Seal Tape

Instantly seals out water, air and moisture. With an extra thick adhesive layer and UV resistant backing this tape conforms to form a permanent bond indoors and out. Essential repair kit, particularly for boaters but with a multitude of other uses – keep one in your toolbox! 10cm wide, 3m roll.

**2599 Gorilla Waterproof Patch & Seal Tape.** 3m.



2586

2589





## Gorilla Double-sided Mounting Tape

Provides a quick and easy solution to mount and repair where traditional fasteners can't. This industrial strength double-sided tape grips to smooth and rough surfaces, delivering an instant and weatherproof bond. 25.4mm x 1.52m.

**2595 Double-sided Mounting Tape.** 150cm.



## Gorilla Contact Adhesive Clear

Can be used on a variety of surfaces indoor and out. It's 100% waterproof provides a permanent, flexible bond, and holds in just seconds. The no-run formula makes projects and repairs easy, and it dries crystal clear for an improved finish.

**2608 Gorilla Contact Adhesive Clear.** 75g.



## Gorilla Super Glue Gel

Easy-to-use, thicker and more controlled formula great for multiple surfaces and vertical applications. In addition there's an anti-clog cap with a metal pin in the cap to ensure an airtight seal for maximum reusability.



**2587 Gorilla Super Glue Gel.** 15g.



## Gorilla Glue Clear

Like all Gorilla adhesives, this creates a strong permanent bond on wood, metal, glass, ceramics and more, but this one also sets crystal clear – perfect for instances where the finish is important. An extended working time gives you the opportunity to reposition work if required.

**2598 Gorilla Clear Glue.** 50ml.



## Brush & Nozzle Super Glue

Firmly bonds glass, plastics, metal, and ceramics in just 10 seconds. Innovative cap allows application by brush or anti-clog nozzle.

**2556 Gorilla Super Glue with Brush Nozzle.** 12g.



## Gorilla Super Glue

Bonds glass, plastics, metal, and ceramics, with added rubber for impact resistance.

**2572 Gorilla Super Glue.** 15g.



2573

## Super Glue Twin Pack

Two tubes of gorilla's high-performance superglue for long-lasting repairs in an instant. The anti-clog cap with metal pin ensures an airtight seal for maximum reusability.

**2573 Gorilla 2x3g Superglue.**

**New! 2588 Gorilla 2x3g Superglue on Clipstrip of 10.** Supplied on a clipstrip of 10 units, so must be ordered in multiples of 10. Priced individually.



2588



## Gorilla Epoxy Glue

Two-part epoxy sets strong in only 5 minutes.

**2575 Gorilla Epoxy Glue.** 25ml.



# Gorilla Glue

## Gorilla Glue

The best-selling super-strong glue from America - bonds wood, stone, metal, ceramic. 100% Waterproof.

2576 Gorilla Glue. 60ml.

2577 Gorilla Glue. 115ml.

2578 Gorilla Glue. 250ml.



2576



2577



2578



## Sell More!

This retail display stand is FREE when you buy the stock in full. Please call us on +44 (0)1932 244396 for details.



2585 Gorilla Display Stand



## Gorilla Wood Glue

Specially-formulated to bond wood, this Gorilla Glue is water-resistant and dries quickly to a natural colour.

2579 Gorilla Wood Glue. 236ml.



2594



2559

2594 Grab Adhesive Tube. 250g.

2559 Gorilla Grab Adhesive Tube. 80ml.

## High Strength Grab Adhesive

Grabs and sticks almost anything - wood, metal, plastic, laminate etc - for a permanent fix, either as a glue or sealant. It's flexible and waterproof (it even bonds underwater!) and can be painted when dry. Available in a 290ml sealant gun tube or a handy 80ml tube for smaller projects.



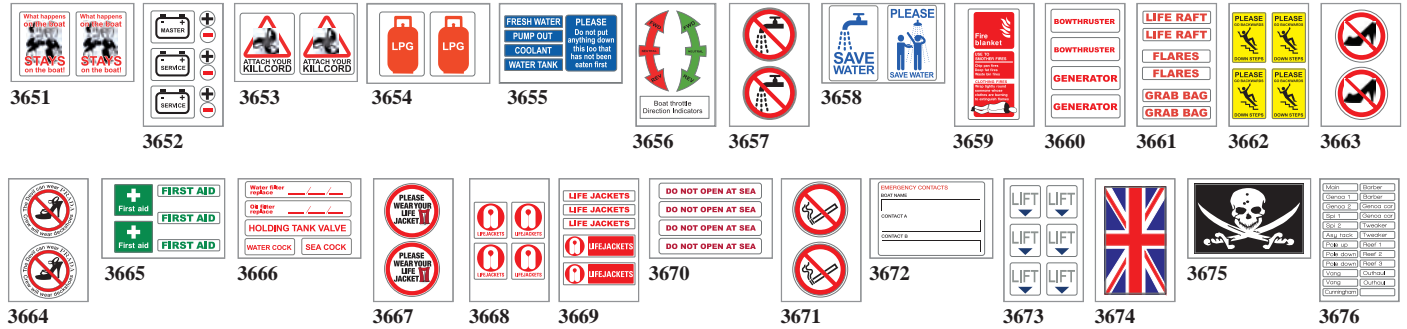


## “Stick It To Em” Boat Stickers

Our range of waterproof vinyl stickers is available in handy postcard-sized sets and includes labels for fuels, electrics, gas, sanitation and emergency procedures as required by the boat safety scheme. Quick and easy to use, and also ideal for caravans and campervans. Supplied as a pack of 10, priced individually.

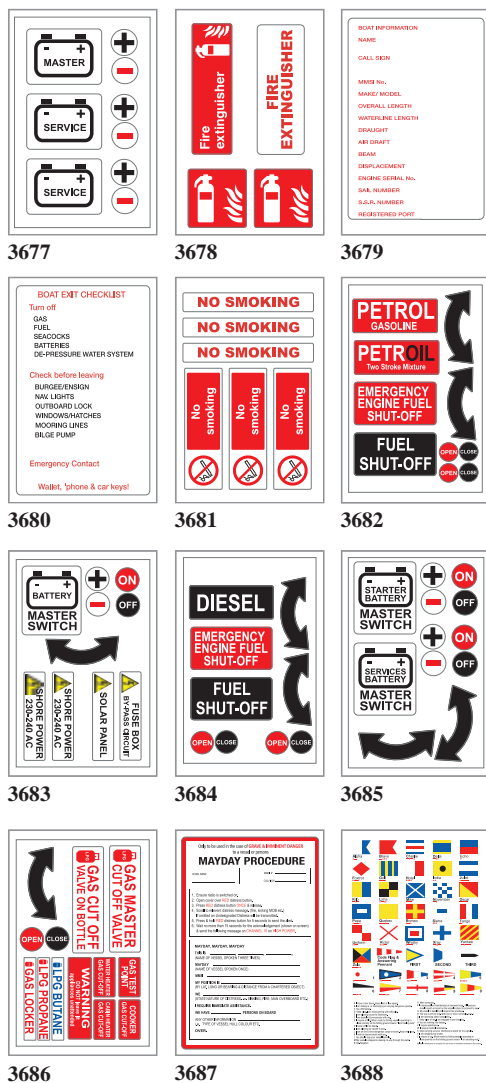
### Small Boat Stickers.

7½x11cm.



### Large Boat Stickers

10½x16cm



### Boat Sticker Display Boards

Supplied FREE of charge when you stock in full. Please call us on +44 (0)1932 244396 for details.



3762 30x120cm  
(18 small & 4 large).



3763 61x61cm (8 small & 8 large).



3764 61x61cm (18 small & 4 large).

## Versatile OctoGrip™ Gloves

Antifouling, grinding, lifting, fibre glassing, carpentry, rope work, engineering... Many jobs call for hand protection, but most protective gloves on the market are cheaply made and poorly fitting - making it difficult to grip things safely or work comfortably all day. The American-designed OctoGrip™ range are in a different league – snug fitting, they're comfortable and highly dextrous, meaning you can use them for a variety of tasks. They also feature highly grippy textured palm coatings to ensure a secure grip on your work, wet or dry, yet so tactile you can even write with them on. A choice of five versions are available, to suit your customers' specific needs. All are tough and long lasting, lightweight, and breathable, and are supplied on smart Euroslot header cards.



### Waterproof Glove

This waterproof glove is fully waterproof, having been double coated, so is perfect for those tough and nasty jobs in the boatyard or on board - keeping your hands warm and dry, and able to grip objects safely.

- 5929M Waterproof Glove M/8
- 5929L Waterproof Glove L/9
- 5929XL Waterproof Glove XL/10



*Video will do your selling for you*



5419

### Sell More Gloves!

You will sell more OctoGrip gloves when you are able to fully explain their benefits, and demonstrate why they are far superior to other gloves on the market. These smart display stands incorporate a video to explain the range, uses, and features, and will help you sell them. They're FREE when you buy the stock – either select your own range, or opt for one of our easy starter packs.

### OctoGrip Countertop Starter Pack (above)

A quick and easy way to start selling OctoGrip gloves, this starter pack comprises a countertop merchandiser packed with a selection of the core lines – a total of 36 units:

- 12 pairs 5920 Cold Weather Glove (3xM, 6xL, 3xXL)
- 12 pairs 5925 Heavy Duty Glove (3xM, 6xL, 3xXL)
- 12 pairs 5927 High Performance Glove (3xM, 6xL, 3xXL)

### 5419 OctoGrip Countertop Starter Pack

### OctoGrip Floor Starter Pack (left)

A quick and easy way to start selling OctoGrip gloves, this starter pack comprises a floor-standing merchandiser packed with the full range of styles and sizes – a total of 148 units:

- 26 pairs 5920 Cold Weather Glove (6xM, 10xL, 10xXL)
- 26 pairs 5929 Waterproof Glove (6xM, 10xL, 10xXL)
- 26 pairs 5925 Heavy Duty Glove (6xM, 10xL, 10xXL)
- 26 pairs 5923 Heavy Duty Polycotton Glove (6xM, 10xL, 10xXL)
- 26 pairs 5927 High Performance Glove (6xM, 10xL, 10xXL)
- 18 pairs 5928 Cut Safety Glove (6xM, 6xL, 6xXL)

### 5417 OctoGrip Floor Starter Pack





## Cold Weather Glove

With a Hi-Viz orange 15G polyester outer and brushed acrylic liner, this cold weather variant provides extra warmth and remains flexible and much more comfortable in extreme conditions than typical insulated gloves. The OctoGrip™ latex palm ensures maximum grip and good resistance against chemicals and abrasion.

- 5920M Cold Weather Glove M/8**
- 5920L Cold Weather Glove L/9**
- 5920XL Cold Weather Glove XL/10**



## Heavy Duty Polycotton Glove

A versatile general-use 13G poly/cotton glove which provides additional warmth/protection compared to the breathable nylon/lycra option, whilst remaining form-fitting and dextrous for all-day comfort. The OctoGrip™ latex palm ensures maximum grip and good resistance against chemicals and abrasion.

- 5923M Heavy Duty Polycotton Glove M/8**
- 5923L Heavy Duty Polycotton Glove L/9**
- 5923XL Heavy Duty Polycotton Glove XL/10**



## Heavy Duty Glove

A versatile general-use glove with a modern 15G nylon/lycra liner to give full upper-hand breathability and superior form-fitting comfort. The OctoGrip™ latex palm ensures maximum grip and good resistance against chemicals and abrasion.

- 5925M Heavy Duty Glove M/8**
- 5925L Heavy Duty Glove L/9**
- 5925XL Heavy Duty Glove XL/10**



## High Performance Glove

Like a second skin, this lightweight, form-fitting variant is the pinnacle in comfort, with a modern 15G nylon/lycra liner to give full upper-hand breathability and flexibility. The PalmWick® nitrile-coated palm is also breathable and wicks sweat away for all-day comfort, grip, and feel, as well as providing chemical resistance.

- 5927M High Performance Glove M/8**
- 5927L High Performance Glove L/9**
- 5927XL High Performance Glove XL/10**



## Cut Safety Glove

This cut resistant variant is certified to *ANSI-ISEA 105-2016 cut level A5* and *EN388: 2016 cut level E standards*, and made from Hi-Viz yellow reinforced 13G HPPE making it especially suitable for use when working with blades or sharp edges. Additional reinforcement between the thumb and forefinger provides enhanced protection at this particularly vulnerable spot. The PalmWick® nitrile-coated palm wicks sweat away for all-day comfort, grip, and feel, as well as providing chemical resistance.

- 5928M Cut Safety Glove M/8**
- 5928L Cut Safety Glove L/9**
- 5928XL Cut Safety Glove XL/10**





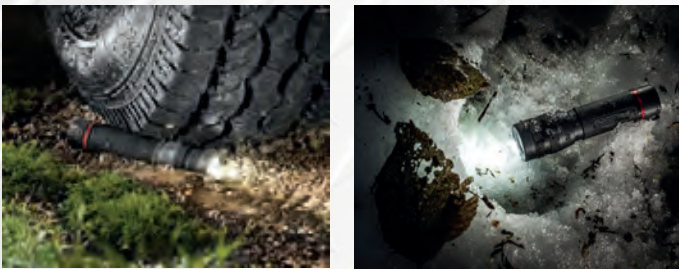
## Coast Range

Coast never stop innovating and are now producing torches with features and performance that would have been unheard of just a year or two ago, especially at these prices. Products launched in the last year demonstrate a huge step up in brightness as well as innovations such as voice control (see 5469 below right), and *Power iQ* battery life screen (right), that help you work efficiently or enjoy your time outdoors safely at night. Most of the range is now rechargeable, and Coast's new USB-charging batteries (see page 85) mean you can easily convert those that aren't.



## Waterproof Torches with Focusing Beam

The all-new GX series torches are made from a tough fibreglass core with a rubber overmould that makes them waterproof, dustproof, and easy to grip. So if you need a torch you can depend on in the toughest conditions, the GX range is for you. They also offer fingertip focusing optics for flood-to-spot beam adjustment. IP67 rated.

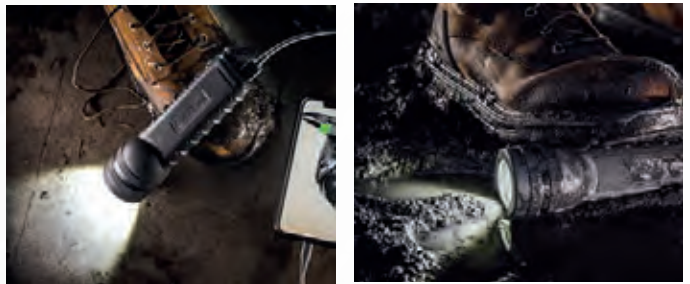


**New! 5463 GX10 Torch.** 360 lumens (550 lumens on turbo mode). 18hr run time. 13cm. Uses 3xAAA batteries.

FL1 STANDARD		
1600 LUMENS	250m	5hr
HIGH OUTPUT	BEAM DISTANCE	RUNTIME

**New!**

**New! 5464 GX40R Torch.** 1600 lumens (3000 lumens on turbo mode). Rechargeable, with power out and battery life indicator. 27hr run time. 19cm.



FL1 STANDARD		
360 LUMENS	145m	5hr
HIGH OUTPUT	BEAM DISTANCE	RUNTIME

**New!**

## Coast PolySteel Waterproof Torches

Coast's PolySteel range combines a tough stainless-steel core with a lightweight textured polyresin coating. The result - a light and super-tough torch which will withstand crushing, impacts (tested with a 3m drop onto concrete), water (waterproof to 3m), heat, and dust. Lifetime warranty.

- 5776 Coast PS200 Waterproof Torch.** Uses 3x AAA batteries. 13cm.
- 5777 Coast PS400 Waterproof Torch.** Uses 4x AAA batteries. 15cm.
- 5778 Coast PS600 Waterproof Torch.** Uses 4x AA batteries. 20cm.



FL1 STANDARD		
320 LUMENS	118m	3h 30mins
LIGHT OUTPUT	BEAM DISTANCE	RUNTIME

5776

FL1 STANDARD		
375 LUMENS	193m	1h 30mins
LIGHT OUTPUT	BEAM DISTANCE	RUNTIME

5777

FL1 STANDARD		
710 LUMENS	247m	2hrs
LIGHT OUTPUT	BEAM DISTANCE	RUNTIME

5778

**LIFETIME WARRANTY**



**Power iQ real-time display – no more guesswork**

Not only are these the brightest torches we've seen from Coast (up to an astonishing 15,000 lumens!), their new *Power iQ* system shows you exactly how much life is left in your batteries – displayed on the OLED screen in hours and minutes. You will also clearly see which power mode you're using, so there will be no more guesswork or simply keeping your fingers crossed that your torch will last. Both *Power iQ* torches are rechargeable or can be powered by AA/AAA batteries if necessary. They offer slide focusing, five power modes, including 'moon glow' for comfortable reading, and can be used to charge other devices via their power-out socket. IP54-rated water/dust resistance.



**New!**



**New!**



**New! 5466 Coast XP40R Power iQ Torch.** 3,800 lumens (8,000 lumens on turbo mode). 15hr run time. 27cm.

**New! 5467 Coast XP80R Power iQ Torch.** 7,300 lumens (15,000 lumens on turbo mode). 10hr run time. 31cm.



**Voice-controlled head-torch delivers hands-free illumination**

When you're carrying heavy objects, wearing gloves, working in tight spaces, or have dirty hands, you'll appreciate being able to control this powerful 1,000 lumen headtorch with simple voice commands. Access more than 20 modes instantly on demand (no more cycling through modes) including spot/flood beam, area light, red, green, or blue lights. It's rechargeable for up to 83 hours' use, with a rear battery pack that features red and flashing red safety lights and can be removed to reposition on a backpack or pocket. The comfortable, breathable head strap is woven with reflective fibres to ensure you can be seen at night, and it grips securely onto helmets without fiddly helmet clips. IP54 water/dust resistance.

**New! 5469 Coast RL35R Voice-controlled Rechargeable Headtorch.**





## High Performance, Dual Power XP14R

The XP14R offers an incredible 4,500 lumens in turbo mode, as well as four lower brightness levels that go down to the 16 lumens 'moon glow' mode for comfortable reading. Like others in the XP series (see page 79 of our 2024 trade catalogue) it's rechargeable and can use AA batteries in an emergency. A simple slide focuses the pure white beam from spot to flood. Battery life indicator in the tailcap. 23cm long.

**New!** 5465 Coast XP14R Rechargeable Focusing Torch.



**New!**



FL 1 STANDARD		
1600 LUMENS	250 m	4hr
HIGH OUTPUT	BEAM DISTANCE	RUNTIME



FL 1 STANDARD		
400 LUMENS	180 m	1h 55mins
HIGH OUTPUT	BEAM DISTANCE	RUNTIME

## Coast XP6R

The XP6R offers up to 400 lumens with 3 power levels for brightness/battery life, and comes supplied with charging lead. Length 9cm.  
5930 Coast XP6R Rechargeable Dual Power Torch.



FL 1 STANDARD		
1000 LUMENS	225 m	3h 10mins
HIGH OUTPUT	BEAM DISTANCE	RUNTIME

## Coast XP9R

The XP9R offers up to 1000 lumens with 3 power levels for brightness/battery life, and comes supplied with charging lead. Length 13cm.  
5931 Coast XP9R Rechargeable Dual Power Torch.



## Coast XPH25R

The XP25R offers an incredible 400 lumens in high power mode as well as 2 lower power levels for brightness/battery life. Comes supplied with charging lead.  
5938 Coast XPH25R Rechargeable Dual Power Head Torch.

FL 1 STANDARD		
410 LUMENS	120 m	1h 45mins
HIGH OUTPUT	BEAM DISTANCE	RUNTIME



## Coast XPH30R

The XPH30R offers an incredible 1000 lumens in TURBO mode as well as 3 lower power levels for brightness/battery life. Comes supplied with charging lead and glowing power button to indicate remaining battery life.  
5934 Coast XPH30R Rechargeable Dual Power Head Torch.

FL 1 STANDARD		
490 LUMENS	112 m	7h 45mins
HIGH OUTPUT	BEAM DISTANCE	RUNTIME



## Coast XPH34R – Our Brightest Head Torch Ever!

The XPH34R offers an incredible 2400 lumens in TURBO mode - Coast's brightest ever head torch! - as well as 3 lower power levels for brightness/battery life. Comes supplied with charging lead and glowing power button to indicate remaining battery life.

5935 Coast XPH34R Rechargeable Dual Power Head Torch.



FL 1 STANDARD		
1025 LUMENS	136 m	6h 15mins
HIGH OUTPUT	BEAM DISTANCE	RUNTIME





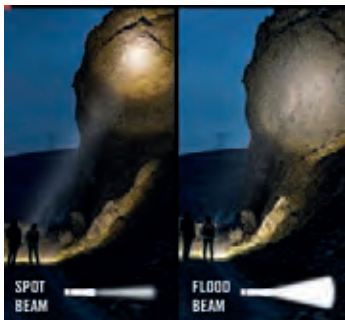


**New!**

### Rechargeable, focusing head torch

Coast's FLX40R packs every feature you need into a well-built and superb value head torch. Firstly, four power modes take you from a comfortable reading light to an all-illuminating 700 lumens. And that beam can be focussed from spot to flood with a simple twist. Red and green lights are included too, and it's rechargeable via USB lead supplied. The comfortable, breathable head strap is woven with reflective fibres to ensure you can be seen at night, and it grips securely onto helmets without fiddly helmet clips. IP54 water/dust resistance.

**New! 5468 Coast FLX40R Rechargeable Focusing Headtorch with red & green LEDs.**



Fixed Focus Beam

FL 1 STANDARD		
700 LUMENS	92m	2:45hr
HIGH OUTPUT	BEAM DISTANCE	RUNTIME



### FL14 Head Torches in Four Colours

So light you'll forget you're wearing it, this great-value head torch from Coast offers two white LEDs with a maximum output of 37 lumens, as well as a red LED which offers constant on and flashing modes. The 2xAAA batteries (included) provide up to 20 hours run time on low setting, and it's all packed into a compact, adjustable, weatherproof casing.

**5782 Coast FL14 Head Torch (Black).**

**5788 Coast FL14 Head Torch (Blue).**

**5789 Coast FL14 Head Torch (Orange).**

**5790 Coast FL14 Head Torch (Green).**



5782



5788



5789



5790

### Coast FL13R Head Torch

Coast's FL13R is an incredibly good value rechargeable lightweight head torch. A special COB LED produces a general broad beam with high (270 lumens), low (85 lumens), red (to preserve your night vision), and flashing red (emergency) settings. The beam angle can be adjusted for close up or distance use, and it is fully rechargeable via USB lead (supplied) providing 5-10 hours use per charge. 5-year warranty.

**New! 5456 Coast FL13R Head Torch.**

**New!**



FL 1 STANDARD			FL 1 STANDARD		
85 LUMENS	12m	10h 00mins	270 LUMENS	20m	5h 00mins
LOW OUTPUT	BEAM DISTANCE	RUNTIME	HIGH OUTPUT	BEAM DISTANCE	RUNTIME



### Coast FL14 Discounted Display Pack of 10

**With 5% Discount**

A ready-to-go display pack containing 10 of Coast's FL14 head torches in a counter-top merchandiser at 5% below the regular trade price. Available in black or multi-colour options.

**5794 Coast FL14 Display Pack of 10 Black.**

FL 1 STANDARD		
37 LUMENS	22m	9h 30mins
LIGHT OUTPUT	BEAM DISTANCE	RUNTIME



5786

**5% Discount**



**Powerful Rechargeable Keyring Torch**

Not just a novelty, this keyring torch is seriously bright – 380 lumens on the highest of three settings – and dependable in everyday use or an emergency. And it’s rechargeable too – lasting up to 6.5 hours per charge, and even has a built-in indicator to give you an idea of how much power you have left. Measures 6cm long and includes USB charging cable.

**5941 Coast Rechargeable Keyring Torch.**

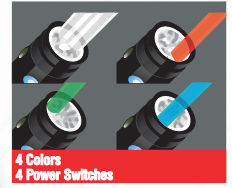


FL1 STANDARD		
380 LUMENS	78m	3h 00mins
LIGHT OUTPUT	BEAM DISTANCE	RUNTIME

**Coast TX10 4-colour Torch**

From its pocket-sized anodised-aluminium case, the TX10 produces a bright white flood light, red light (to preserve your night vision), and green and blue lights. Uses 3xAA batteries (supplied). Measures 10cm.

**5746 Coast TX10 Torch.**



FL1 STANDARD		
80 LUMENS	33m	9h 45mins
LIGHT OUTPUT	BEAM DISTANCE	RUNTIME

**Coast G19 Torch**

The G19 torch is only 10cm long, but produces a powerful tightly-focused ‘inspection’ beam from its super-tough water-resistant aluminium housing. Uses 1xAAA battery (supplied) which lasts up to 2:30hrs.

**5740 Coast G19 Torch.**



FL1 STANDARD		
54 LUMENS	20m	2h 30mins
LIGHT OUTPUT	BEAM DISTANCE	RUNTIME

**Coast G4 Keyring Torch**

Despite being only 6cm in length, the G4 punches above its weight with an 19 lumen pure white beam, aircraft-grade aluminium barrel, and build quality that is just as robust as its larger brothers. Uses 4xAG5 batteries (included).

**5764 Coast G4 Keyring Torch.**



FL1 STANDARD		
19 LUMENS	24m	0h 45mins
LIGHT OUTPUT	BEAM DISTANCE	RUNTIME

**Coast EAL17 Dual Power Lantern**

Coast’s dependable EAL17 lantern is now rechargeable, which offers you much lower running costs as well as being better for the environment, and it’s even brighter than its predecessor. The enclosed ZX955 ‘Zithion’ rechargeable battery will provide up to 31hrs of 360-degree illumination on its low-intensity setting - sufficient for about four nights and perfectly bright enough for most uses. When you need more power, the high-intensity setting delivers 580 lumens; and there are options for static red and flashing red light too. As a back-up, you can use four of the widely-available D batteries. Measures 10" tall. 5-year warranty. Charge using USB-C cable, not supplied.

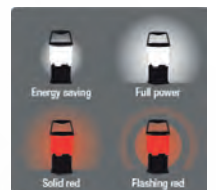
**5772 Coast EAL17 Dual Power Lantern.**



**Coast EAL12 LED Lantern**

This feature-packed little lantern is a handy 15cm tall and offers up to 4 nights (38hrs) illumination on one set of 4xAA batteries. You also get a higher level of illumination (168 lumens), a static red light to preserve your night vision, and a flashing red light for emergencies.

**5770 Coast EAL12 LED Lantern.**





**Rechargeable Batteries Save Money and the Environment**

Save money and reduce waste by switching to rechargeable batteries. These AA and AAA batteries from Coast turn any device into a rechargeable one, as they're optimised to work safely and reliably in devices that were designed for standard alkaline batteries, with a long run time. They're also able to be recharged, up to 1,000 times, individually (as opposed to having to charge a complete set at a time) using the supplied USB and USB-C connection lead. Charging takes only 2.5hrs for the AA size and 1.25hrs for the AAA size.



**New!**

**SAVE 5% when you buy a 12 pack CDU.**



**New! 5461 Coast ZX Rechargeable AAA batteries, 4 pack.**



**New! 5462 Coast ZX Rechargeable AA batteries, 4 pack.**



*USB / USB-C charging adapters*



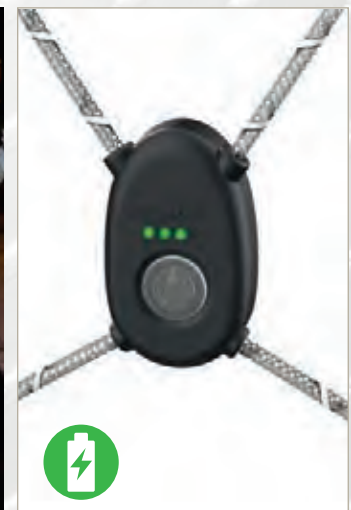
*Can be charged individually*



**Wearable LED Cord. Be Seen, Be Safe**

If you're running or riding, sailing or kayaking, walking or working outdoors at night, it's safer to ensure you can be seen. This lightweight rechargeable unit wraps a bright LED cord around your body, ensuring you can be seen from any angle. You can choose from, or cycle through, six colours (perfect if you need to identify your crew members) and even when switched off it remains reflective. Rechargeable, via USB cable supplied, it will last around 13 hours per charge, and a built-in indicator gives you an idea of how much power you have left. Size adjustable to comfortably fit most adults. Rated at IP54 - meaning it's resistant to rain and spray, but not intended to be submerged.

**5944 Coast Wearable LED Cord. Be Seen, Be Safe.**







**Economy Lighting Range from CORE**

Core Lighting's no-nonsense approach offers brightness, features, and durability at incredibly good value prices which, combined with striking packaging, make them perfect impulse buy lines. Packaging allows for display on eurohooks or shelf/counter top. This range sits alongside our high performance and waterproof lighting from Coast, offering your customers a comprehensive range catering for all price points, making extra sales which you might otherwise miss. All items carry a one year warranty.



**Core Lighting Starter Pack,**

Everything you need to create a bold and eye-catching display. Includes 68 items:

- 20x 5427 CLK15 Keyring Torch
  - 6x CL80 Torch
  - 6x CL200 Torch
  - 12x 5430 CLH200 Rechargeable Head Torch
  - 6x 5431 CLH320 Rechargeable Head Torch
  - 12x 5432 CL400 Torch/Inspection Lamp
  - 6x 5434 CLW1150 Rechargeable Work Lamp
- (Doesn't include 5433 CLW800 work lamp)*

**Core CLH200 Rechargeable Head Torch**

The CLH200 is a compact and lightweight 200 lumen head torch which is rechargeable via USB cable (supplied) for up to 5 hours of use. It offers high, medium, low, and flashing SOS modes, plus a clever motion sensor that allows you to switch on or off with just a wave of your hand. Supplied in a CDU of 12 units and must be ordered in multiples of 12.

5430 Core CLH200 Rechargeable Head Torch.



Motion Sensor



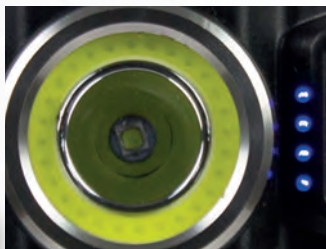
Rechargeable

<b>200</b> LUMENS BRIGHT	<b>55m</b> METRE RANGE	<b>5hr</b> RUNTIME	<b>x4</b> LIGHT MODES	<b>ON/OFF</b> MOTION SENSOR	<b>HINGED</b> BEAM ADJUSTMENT
-----------------------------	---------------------------	-----------------------	--------------------------	--------------------------------	----------------------------------

**Core CLH320 Rechargeable Head Torch**

The CLH320 is a lightweight 320 lumen head torch which is rechargeable via USB cable (supplied) for up to 9 hours of use. It offers high, low, flashing, red, and flashing red modes, plus a clever motion sensor that allows you to switch on or off with just a wave of your hand.

5431 Core CLH320 Rechargeable Head Torch.



Battery life indicator



Rechargeable

<b>320</b> LUMENS BRIGHT	<b>50m</b> METRE RANGE	<b>9hr</b> RUNTIME	<b>x5</b> LIGHT MODES	<b>ON/OFF</b> MOTION SENSOR	<b>HINGED</b> BEAM ADJUSTMENT
-----------------------------	---------------------------	-----------------------	--------------------------	--------------------------------	----------------------------------







**Illuminated Beanie - Headlights for Your Head**

When you are out after dark, you'll appreciate the four high-performance LEDs sewn into the brim of this knitted beanie. They provide an incredibly bright, broad beam with three brightness levels for hands-free work, running, walking, or cycling, or simply to ensure you can be seen by drivers. The lamp unit is removable and easily recharged in a USB socket, and the hat is machine washable. One size fits all.

**6301 Core Rechargeable LED Beanie Hat, black.**

**6302 Core Rechargeable LED Beanie Hat, grey.**



6301

6302



**Core Beanie Hat for Kids**

Now offered in a smaller version, the Core illuminated beanie hat will keep your children both warm and safe in winter. The lamp unit is removable and easily recharged in a USB socket, and the hat is machine washable.

**New! 5459 Core Children's Rechargeable LED Beanie Hat.**

**New!**



**Core Rechargeable Focusing Torch**

**New!**

A 1000-lumen focusing torch that is rechargeable should cost a lot more than this, but it's typical of Core's mission to produce quality products at incredible prices. Sold in display packs of 6 and must be ordered in multiples of 6.

**New! 5460 Core Rechargeable Focusing Torch, 1000 lumens.**



1000	100m	1.5hr	x2
LUMENS BRIGHT	METRE RANGE	RUNTIME	LIGHT MODES







Order 1x5435 and  
get a mixed CDU  
6x Core CL80  
6x Core CL200



x6

5435 Core CL80/200  
torches mixed CDU.



**Core CL200 Torch**

Their CL200 model is a pocket-sized 11cm in length, yet offers a 200 lumen beam in high, low, and flashing modes, flood-to-spot fingertip focussing, and a tough aluminium case. **It is supplied in 6's in a CDU with 6 of their CL80 pocket torches (order in multiples of 6 of each).** Uses 3x AAA batteries (not supplied).  
**5429 Core CL200 Torch.**



**Core CL80 Torch**

Their CL80 model is a pocket-sized 10cm in length, yet offers an 80 lumen beam in high, low, and flashing modes, flood-to-spot fingertip focussing, and a tough aluminium case. **It is supplied in 6's in a CDU with 6 of their CL200 pocket torches (order in multiples of 6 of each).** Uses 1x AA battery (not supplied).  
**5428 Core CL80 Torch.**

<b>80</b>	<b>50m</b>	<b>2.5hr</b>	<b>x3</b>
LUMENS BRIGHT	METRE RANGE	RUNTIME	LIGHT MODES



<b>200</b>	<b>50m</b>	<b>3hr</b>	<b>x3</b>
LUMENS BRIGHT	METRE RANGE	RUNTIME	LIGHT MODES



Slide Focus

**Core CLK15 Keyring Torch**

The CLK15 keyring torch is supplied in a CDU of 20 units and must be ordered in multiples of 20. Each uses 3x LR44 batteries (supplied). Length 6½cm.  
**5427 Core CLK15 Keyring Torch.**



<b>15</b>	<b>10m</b>	<b>5hr</b>
LUMENS BRIGHT	METRE RANGE	RUNTIME







**Core CLW800 Work Lamp**

The CLW800 work lamp illuminates a wide area with up to 800 lumens of light with high and low power modes. It's lightweight, portable, and can stand, hang, or be mounted in a huge array of locations providing essential illumination for up to 5 hours. Uses 4x AA batteries (not supplied). Measures 17x12cm.

5433 Core CLW800 Work Lamp.

<b>800</b>	<b>5hr</b>	<b>x2</b>
 LUMENS BRIGHT	 RUNTIME	 LIGHT MODES





**Core CLW1150**

**Rechargeable Work Lamp**

The rechargeable (via USB cable supplied) CLW1150 work lamp illuminates a wide area with up to 1150 lumens of light with high and low power modes. It's lightweight, portable, and can stand, hang, or be mounted in a huge array of locations providing essential illumination for up to 5 hours per charge. Furthermore, it features a battery life indicator and can even be used to charge other devices such as a mobile phone via its USB out socket. Measures 17x12cm.

5434 Core CLW1150 Rechargeable Work Lamp.

<b>1150</b>	<b>5hr</b>	<b>x2</b>
 LUMENS BRIGHT	 RUNTIME	 LIGHT MODES



Battery life indicator

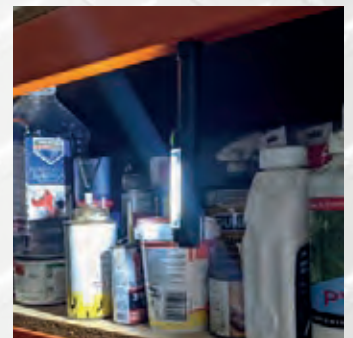


Charges other devices

**Core CL400 Torch/Inspection Lamp**

Their incredibly versatile CL400 lamp combines a torch and inspection/area lamp and gives you high, low, and red light options, with a magnetic base, pocket clip, and keyhole hook for easy hands free use anywhere. 3x AA batteries not supplied provide up to 9hrs of illumination. Length 19cm. Supplied in a CDU of 12 and must be ordered in multiples of 12.

5432 Core CL400 Torch/Inspection Lamp.







Magnetic base



Pocket clip

End light

<b>400</b>	<b>50m</b>	<b>9hr</b>	<b>x4</b>
 LUMENS BRIGHT	 METRE RANGE	 RUNTIME	 LIGHT MODES



**Limit Watches**

Limit were established in 1912, and now we are distributors for their range of superb value watches. Offering a variety of styles, the collection features analogue and digital movements, with classic, modern, and sports designs. Nicely packaged, with keen price-points, we have found them to be great impulse purchases and gift ideas that sell particularly well when placed near the till point.



**Limit Pilot Watch**

Inspired by the design of aircraft navigation dials, these superb value watches borrow the styling of the classic pilot's watch - in which simplicity and ease of reading, day or night, was key. Large, luminous hands are set against a clear contrasting face, and there is also a day/date function. Case diameter 43mm. Gift Boxed.

**99921 Limit White Dial Pilot Watch, Black Strap.**

**99925 Limit White Dial Pilot Watch, Brown Strap.**

**94037 Limit Pilot Watch, brown/black.**



99921



99925



94037



97882



97883

**Limit Aviator Watch**

Designed to look like the dials of vintage aircraft instruments, this retro-style watch has a matte black dial with contrasting hands and numerals, in which the minute indicators are more prominent than the hours. A date indicator completes the face, and it's housed in a 46mm antique-effect alloy case with scratch resistant mineral glass and black PU strap. Water resistant to 50m and supplied gift boxed.

**New! 97882 Limit Aviator Watch, silver/black.**

**New! 97883 Limit Aviator Watch, gold/brown.**





**New!**



### Limit Classic Pilot Watch

A classic pilot-style watch with a design inspired by early aircraft instruments, in which clarity and ease of reading were paramount. The matt black face, with luminous hands and markers, contrasts with a polished silver-coloured case and brown leatherette strap. Case diameter 42mm. Water resistant to 50m. 2-year guarantee. Gift boxed.

**New! 97658 Limit Pilot Watch, black.**  
**97657 Limit Pilot Watch, silver/brown.**

97658

97657



### Limit Glow Dial Watch

If you need a watch that's easy to read, day or night, then this is the one for you. The entire face is coated in a luminous material, so the black hands and numerals stand out even in the dark - with no buttons to press. It's comfortable too - lightweight with a soft black silicone strap. Case diameter 40mm. Gift boxed.

**New! 95462 Limit Glow Dial Watch, black.**



**New!**



### Limit Vintage Traveller Watch

A brown leatherette strap, aged silver-coloured case, and cream face combine to give this watch a vintage feel, reminiscent of those used by 1930s explorers. This watch also features scratch-resistant mineral glass and a day/date display. Case diameter 43mm. Water resistant to 50m. 2-year guarantee. Gift boxed.

**99491 Limit Vintage Traveller Watch.**



### Limit Sports Watch

The bright, oversized numerals, luminous hands, and backlight function ensure this sports watch can be read easily at a glance. At 48mm diameter the case is large, but the watch remains incredibly lightweight at just 55g. 100m water resistant. 2-year guarantee. Gift boxed.

**96798 Limit Sports Watch, navy/lime.**  
**96799 Limit Sports Watch, grey/red.**  
**99117 Limit Sports Watch, white/blue.**



96798



96799



99117



**Limit Military-style Watch**

A nylon strap, black alloy case, and black face with large crisp white markings, gives this watch a distinctly military appearance. Case diameter 42mm. Water resistant to 30m. 2-year guarantee. Gift boxed.  
**99488 Limit Military-style Watch, black.**



**Limit Backlit Watch**

An analogue sports watch that's easy to read day or night thanks to dial illumination and luminous hands and markers. Water resistant to 100m. Case diameter 46mm.

**99492 Limit Sports Watch with Backlight, black/red.**



95896



95897

**Limit Super-lightweight Sports Watch**

This super-lightweight (only 22g!) sports watch has a case diameter of 33mm, so is ideal for ladies or those who don't like their watches too chunky. Black hands on a white face offer good clarity, and can be read at night thanks to the backlight function. A sporty grey PU case/strap completes the sporty look, and is water resistant to 100m. 2-year guarantee. Gift boxed.

**95896 Limit Sports Watch, grey/orange.**

**95897 Limit Sports Watch, grey/green.**

**Limit Digital Watch**

Everything you need in a great value outdoor sports watch: digital display with dual time feature; calendar; alarm; stopwatch; and back light. And it's all housed in a sturdy 45mm ABS plastic case which is rated 100m for water resistance. Gift boxed.

**New! 97878 Limit Digital Watch, Black/Grey.**

**New! 97879 Limit Digital Watch, Black/Navy.**



97878



97879

**Limit Digital Watch**

This feature-packed sports watch boasts huge numerals - easy to read at a glance - and a lightweight 47mm case with matching silicone strap. The specification includes stopwatch, countdown timer, calendar, alarm, backlight, and dual time display, and is waterproof to 100m. 2-year guarantee. Gift boxed.

**96793 Limit Digital Watch, navy/lime.**







## Limit ProXR Countdown Watch

Limit's philosophy of producing superb designs, packed with features and available at great value prices is apparent in their ProXR model – behind the rugged marine styling lies a watch with stopwatch, countdown timer, pacer, day/date, five alarms, and night time illumination. It's waterproof to 100m and comes gift-boxed, with a 2-year guarantee. Case diameter 50mm.

**91343 Limit ProXR Countdown Watch, black/orange.**

**95398 Limit ProXR Countdown Watch, navy/blue.**



91343



95398

## Limit Digital Countdown Watch

Features include: day/date, AM/PM and 12/24 hrs format, daily alarms, hourly chime, dual time, countdown timer and backlight. Case diameter 44mm, with silicone strap. 100m water resistant. 2-year guarantee. Gift boxed.

**98128 Limit Countdown Watch, black/green.**



## Limit Wire Guard Digital Watch

To 'Adventure-proof' this watch, the chunky ABS plastic case is protected with stainless steel bars and bolted to a rugged silicone strap. Its long list of features includes: day/date, stopwatch with lap memory and split time, alarm, and backlight. Water resistant to 100m and offered with a 2-year guarantee. Case diameter 50mm. Gift boxed.

**96796 Limit Wire Guard Digital Watch, navy/green.**

**96797 Limit Wire Guard Digital Watch, khaki.**



96796



96797

## Limit Small Case Sports Watch

For anyone looking for a smaller, unobtrusive watch, this sports design offers a case of just 33mm diameter. It still packs in an easy-to-read digital display, alarm, countdown timer, day/date, and dual time feature, and it's water resistant to 100m.

**99389 Limit Digital Sports Watch, 33mm.**





# New! Nautical Socks

## Nautical Socks

Exclusive to Nauticalia, these socks have been created by us with a selection of colourful nautical designs. To fit UK sizes 6-12. 70-75% Cotton, 24-29% polyamide, 1% Elastane.

**New! 6338 Puffin Socks**

**New! 6339 Boat Socks, red/blue**

**New! 6340 Boat Socks, light blue**

**New! 6341 Pirate Socks**

**New! 6342 Seagull Socks**

**New! 6343 Code Flags Socks**

**New! 6344 Captain Rank Socks**

**New! 6345 Knots Socks**

**6330 Captain Crew Socks**

**6336 Port/Starboard Socks**

**New! 6346 Port & Starboard Anchor Socks**

**New! 6347 Left & Right Code Flag Socks**



6338



6339



6340



6342



6341



6343



6344



6345



Easy to hang packaging

**EXCLUSIVE DESIGN**



6330

6336



6346



6347





## Sherpa Fleece Lined Padded Shirt

Falling somewhere in the grey area between shirt and jacket, this is an exceptionally tough and warm working garment. Its acrylic outer material is hardwearing yet soft to touch, whilst the interior is lined in a thick 100% polyester pile fleece that is pleasant next to the skin and has superb insulation qualities. The cut is long to keep your back warm when bending in the garden or even shovelling snow! There are two breast pockets with button-down flaps, and two handwarmer pockets. Machine washable. Sizes (to fit chest): S(38"/97cm), M(40"/101cm), L(42"/107cm), XL(44"/112cm), XXL(46-48"/117-122cm), XXXL(48-50"/122-127cm).

- 3854 Sherpa fleece lined padded shirt, blue.
- 3855 Sherpa fleece lined padded shirt, green.



Fleece Lining



3854



3855



## Yachtmaster Lace-up Canvas Shoes

Our canvas deck shoes are superb value, making them ideal impulse-buy items and great sellers. Unfortunately, due to prohibitively high manufacturing quantities, we have limited availability and can offer only the sizes below whilst current stocks last.



**Clearance!** 91358 Yachtmaster lace-up canvas shoes. Sizes 4(37), 5(38), 6(39), 6.5(40), 7(41), 8(42), 10(44), 10.5(45). \*9(43) Unavailable.



## Fleece Full Zip Bodywarmer

These versatile body warmers are made with two layers of microfleece bonded together, which provides a high degree of wind resistance to give you an extra level of warmth on those blustery days. It's a practical and comfortable design with a full-length zip and two zipped handwarmer pockets, diamond-quilt stitching across the shoulders, and brown faux-leather trim. Perfect for every-day wear over a shirt or sweater, and machine washable too. Sizes (to fit chest): S(40"/101cm), M(42"/107cm), L(44"/112cm), XL(46"/117cm), XXL(48"/122cm), XXXL(50"/127cm).

- 3857 Fleece Full Zip Bodywarmer, navy.
- 3858 Fleece Full Zip Bodywarmer, olive.



3857



3858

# Riding Coats

## Mens and Ladies' Riding Coats

A traditionally-styled full-length riding coat, that's also perfect for country walks or popping to the shops. The lightweight waterproof polyester shell keeps you dry, while the poly-cotton lining keeps you warm and comfortable all day long. Other practical features include; two-way zip, adjustable back vent, Velcro fastening cuffs, lined detachable hood, and an internal and two external pockets. Ladies' sizes: 10-20. Men's sizes (to fit chest): S(38"), M(40"), L(42"), XL(44"), XXL(46-48"), XXXL(48-50").

WATER  
PROOF

2746Brown Ladies' Riding Coat. Brown.

2746Navy Ladies' Riding Coat, Navy.

2746Plum Ladies' Riding Coat, Plum.



Brown

Navy

Plum



Brown

Navy

Olive



Lightweight lining

WATER  
PROOF

2545Brown Men's Riding Coat, brown.

2545Navy Men's Riding Coat, navy,

2545Olive Men's Riding Coat, olive,



## Balmoral Waterproof Breathable Coats

The 'Balmoral' jacket offers robust protection when the weather is doing its worst. The polyester shell is fully waterproof, with taped seams, and it's breathable to reduce that clammy feeling. A lightweight lining, which extends into the detachable hood, provides additional warmth. A total of six external and two internal pockets, and a double zip make it a versatile garment that will help you enjoy your time outdoors whatever the weather. Sizes (to fit chest): S(38"/97cm), M(40"/101cm), L(42"/107cm), XL(44"/112cm), XXL(46-48"/117-122cm), XXXL(48-50"/122-127cm).



WATER  
PROOF

*Lining*

**3861 Balmoral waterproof breathable coat, navy.**

**3862 Balmoral waterproof breathable coat, olive.**



3861



3862



# Traditional Sweaters & Ponchos

## Ladies' Knitted Poncho

This elegant v-neck poncho is the cosy extra layer to throw on for those breezy autumn walks or summer evenings on the patio after the sun goes down. Knitted in Britain, from 100% British wool, it's a timeless classic with an Arran-style pattern. Generous one-size-fits-all (8-16) design measures 70x70cm. Hand wash only. One Size.

**3872 Ladies' V-Neck Poncho, wine.**

**3873 Ladies' V-Neck Poncho, skiddaw.**

**3874 Ladies' V-Neck Poncho, charcoal.**



## Classic Aran Sweater

It doesn't get more traditional than the classic Aran sweater – originally from the Aran Islands off the west coast of Ireland, they feature distinctive and complex textured patterns, each with its own particular meaning. Our version is made in the UK from 100% British wool. Sizes (to fit chest): S(40"/101cm), M(42"/107cm), L(44"/112cm), XL(46"/117cm), XXL(48"/122cm).

**3865 Classic Aran Jumper, ecru.**

**3866 Classic Aran Jumper, denim.**

**3867 Classic Aran Jumper, skiddaw.**





## Saxon Crew Neck Sweater

A simple crew-neck sweater for men or women knitted from soft and warm British wool, from sheep roaming the Pennine Hills, and featuring a V-shaped fleck design. It can be machine washed, on a cool setting, for easy care. Sizes (to fit chest): S(40"), M(42"), L(44"), XL(46"), XXL(48-50").

**3877 Saxon Crew Neck Sweater, teal.**



## Nordic Crew Neck Sweater

The classic Norwegian sweater is navy with flecks of white, and a ribbed crew neck. Ours is UK-made, with wool from sheep bred in the Pennines, with a little extra length for good coverage and is warm and durable. It can be machine washed, on a cool setting, for easy care. Sizes (to fit chest): S(40"/101cm), M(42"/107cm), L(44"/112cm), XL(46"/117cm), XXL(48"/120cm).

**3853 Nordic Crew Neck Sweater.**



3868



3869

## Balmoral Cable-knit Sweater

A simple, but classic, cable-knit design with a crew neck. Made in the UK from 100% British wool. Sizes (to fit chest): S(40"/101cm), M(42"/107cm), L(44"/112cm), XL(46"/117cm), XXL(48"/122cm).

**3868 Balmoral cable crew, oatmeal.**

**3869 Balmoral cable crew, navy.**



## British Wool Nautical Throw

Made in Britain, of British wool from sheep grazing the Pennine Hills, this chunky knitted throw incorporates a traditional Aran-style pattern and a yacht and anchor design in a contrasting colour. It is perfect for getting cosy in front of the fire, or spending a little longer out on the patio after the sun has gone down, and it can be machine washed on a cool setting for easy care. Measures 150x120cm.

**3875 British Wool Nautical Throw, ecru, 150x120cm.**

**3876 British Wool Nautical Throw, navy, 150x120cm.**



3875



3876



# Traditional Sweaters



*Sweatered submariners in "Above us the Waves", courtesy of The Rank Organisation*

## Submariner Sweaters

Admiralty-issue to the Royal Navy in both world wars, thick wool sweaters like these are every bit as suitable for today's sailors and those who like to keep the waves beneath them. They combine the warmth, comfort and rugged durability of pure Merino wool, whilst the neck and shoulder seams are interlinked for strength. Sizes, relating to chest size, give a loose (but not baggy) fit. S(40"/100cm), M(42"/105cm), L(44"/110cm), XL(46"/115cm), XXL(48-50"/120-125cm).

**92842 Submariner sweater, ecru.**

**92843 Submariner sweater, navy.**



92842



92843



## Breton Crew Sweater

This unisex sweater is perfect for both men and women, featuring traditional Breton navy and white stripes, and made from 100% British wool for excellent warmth and style. Sizes (to fit chest): S(40"/101cm), M(42"/107cm), L(44"/112cm), XL(46"/117cm), XXL(48"/120cm).

**3870 Breton crew sweater 100% wool, navy.**

**3871 Breton crew sweater 100% wool, ecru.**



3870



3871

## Tweed Patch Crew Neck Sweater

The ribbed crew-neck sweater is a design classic that you can depend on whatever the weather. Ours is British-made using wool from sheep that roam in the Pennine Hills, so is warm and tough. Tweed patches on the shoulders are added using a twin needle stitching for durability. It can be machine washed, on a cool setting, for easy care. Sizes (to fit chest): S(40"), M(42"), L(44"), XL(46"), XXL(48"). Navy.

**3878 Tweed Patch Crew Neck Sweater, navy.**





## Pure British Wool Guernsey Sweaters



The traditional Guernsey sweater has changed little in more than 400 years - offering excellent insulation, as well as wind and water resistance, and tremendous durability. Ours are also designed and crafted to last, made from 100% British wool using traditional textured patterns. They are comfortable and practical to wear allowing for good ease of movement, with side vents and finished with a smart crew neck. Sizes (to fit chest): S(40"/100cm), M(42"), L(44"/110cm), XL(46"/115cm), XXL(48-50"/120-125cm).

**95401 Guernsey sweater, ecru.**

**95390 Guernsey sweater, navy.**



95401



95390

## Long-sleeve Breton Top

These heavyweight, three-quarter sleeved T-shirts have relatively wide "boat necks" and a distinctively nautical note to their stripe patterns. 100% cotton. Sizes (to fit chest): S(38-40"), M(40-42"), L(42-44"), XL(46-48").

**95366 Long-sleeve Breton Top, navy/natural.**

**95367 Long-sleeve Breton Top, natural/navy.**

**95368 Long-sleeve Breton Top, red/natural**

**95369 Long-sleeve Breton Top, natural/red.**



95366



95367



95368



95369

# Technical Caps & Breton Caps



Tough, lightweight plastic inner for protection

## Full-peak SafaSail Cap

Incorporates a large peak to protect against bright sunshine, and a chinstrap to prevent cap being blown away in the wind.

**5165 SafaSail Yachting Cap, navy/blue.**

**5166 SafaSail Yachting Cap, navy/red.**



## Narrow-peak SafaSail Cap

A narrow peak version for those at the helm, to enable them to look up and see the wind indicator at the top of the mast.

**5167 SafaSail Yachting Cap, navy/red.**

## Woollen Breton-style Caps

*(Individual sizes)*

As worn by that famous Yellow Submariner, John Lennon, in the Sixties, the rugged Breton-style fisherman's cap is still in fashion. Sizes 56-60cm

**6254 Breton cap, navy.**



## Breton-style Caps *(Mixed carton)*

**60440 Breton Cap, navy.** Box of 24 mixed sizes (4x57cm, 8x58cm, 8x59cm, 4x60cm).



## Captain's White Cap

*(Individual sizes)*

For the fair-weather boating man, there is a crisp white cotton cap with a shiny peak, yellow braiding and embroidered badge. Sizes 56-60cm.

**6252 Captain's white cap (Adult).**

**6252/52 Junior Captain's cap 52cm.**

**6252/54 Junior Captain's cap 54cm**



## Captain's White Cap

*(Mixed cartons)*

**60450 Captain's cap (Adult).** Box of 24 mixed sizes (4x57cm, 8x58cm, 8x59cm, 4x60cm).

**60451 Captain's cap (Junior).** Box of 24 mixed sizes (12x52cm, 12x54cm).



## Knitted Beanie Hats

Made from a double layer of knitted acrylic, our beanie hats are very warm and durable. Available plain, or with our most popular ranks and phrases embroidered in contrasting white thread. Navy blue. 100% acrylic. One size fits all (adult).



6321



6310



6311



6318



*Embroidered, not printed, with rank*



6312



6313



6316

- 6321 Plain
- 6310 Captain
- 6311 Skipper
- 6312 First Mate
- 6313 Crew
- 6316 Ancient Mariner

## Waterproof Beanie Hat

Advanced waterproof fabrics at everyday prices. This knitted acrylic beanie hat is made with a durable waterproof and windproof membrane that keeps you warm and comfortable when the weather is doing its worst. Technical fabrics, identical to those employed by leading brands, are now available at everyday low prices, making them superb impulse-buy lines - perfect for anyone caught out by a sudden downpour. One size fits all (adult).



**Clearance!** 6394 Waterproof Beanie Hat with turnup, black.



**Clearance!** 65025 Child's Knitted Thinsulate Hat, Navy/grey/black, 3 assorted.

## Skipper Knitted Beanie

Made from a double layer of knitted acrylic, this beanie is very warm and durable. It features an anchor design embroidered - not printed - onto the front. One size fits all (adult). Navy Blue.

6365 Skipper Knitted Beanie



# Nautical Caps

## Yachtsman Caps

Finest quality caps heavily embroidered – not printed – with the most popular of our crew ranks and nautical slogans. Made from 100% cotton twill, with plastic-stiffened brims and Velcro adjustment. One size fits all – 54-61cm.

- 6325 Mermaid Off Duty Cap
- 6278 Captain & Anchor Yachtsman Cap
- 6279 Skipper & Anchor Yachtsman Cap
- 6280 Crew & Anchor Yachtsman Cap
- 6282 Anchor/Leaf Yachtsman Cap
- 6283 Ship's Wheel/Leaf Yachtsman Cap
- 6269 Vintage Vessel Cap
- 6322 Seas the Day Cap
- 6324 Warning, Old & Grumpy Cap
- 6253 Old Sailors Never Die Cap



6325



Adjustable Velcro strap



6278



6279



6280



6282



6283



6322



6324



6253



6324



## Crew Caps

When specifying our crew caps, we chose the “top-spec” options all the way. So the bulk of the cap is made from strong, 100% cotton twill material, with a sweat-resistant hem and reinforcing sewn around the inside. The brims are plastic (not cardboard), and covered in soft fawn-coloured suedette on top with navy cotton twill beneath (to reduce glare on the eyes). The size-adjusting strap has a metal buckle, and metal sleeve for tucking away the end neatly. Each is heavily embroidered with a crew position in cotton thread. The quality is excellent as is the price. One size fits all. Max 61cm, min 54cm.



Adjustable foldaway strap



6203



6204



6205

- 6203 Captain
- 6204 Skipper
- 6205 Crew
- 6206 First Mate
- 6207 Plain Yachting Cap
- 6225 Ancient Mariner
- 6273 Bottoms Up
- 6328 Engineer



6206



6225



6328



Clearance! 6273  
“Bottoms Up”  
Yachting Cap.

## Nautical Baseball Caps

Lightweight, economical sailing caps for all the crew. Available as individual designs in packs of 24, or as a mixed pack of 24 giving you 6 of each.

- 64336A Crew
- 64336B Captain
- 64336F Skipper

Individual  
cartons



64336A



64336B



64336F



Mixed  
carton

64336 Nautical Baseball Cap,  
4 assorted.

## Dexshell Waterproof Socks, Gloves & Hats

High-tech waterproof, windproof and breathable accessories that really do work, and do so equally well sailing in the Solent, or on rainy days on the High Street! Ideal for all outdoor activities including sailing, cycling, canoeing, fishing, hunting, walking, riding, running, basically anything where you want to keep hands, feet and head warm and dry.

### How do they work?

DexShell products use a unique seamless 3-layer fabric to keep you warm and dry.

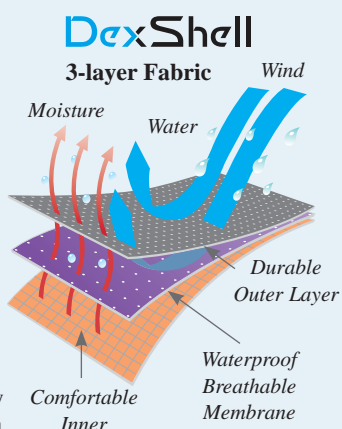
#### Durable Outer Layer:

Quick-drying, abrasion-resistant stretch fit yarn.

#### Middle Porelle® Layer:

A waterproof and breathable membrane which allows perspiration to escape whilst blocking water and wind from entering.

**Breathable Inner Layer:** Actively wicks moisture away from the skin for comfort and warmth.



## DexShell Ultra Weather Winter Gloves

Constructed with PrimaLoft® Gold thermal insulation and waterproof breathable Porelle® membrane, these warm winter gloves feature reflective fabric and print for safety, touchscreen thumb and forefinger tips so that you can continue to use your phone, as well as anti-slip reinforced palms and ripstop water repellent outer shells. They ensure you remain warm, dry, and comfortable in all your winter sports and activities.

**New! 6383 DexShell Ultra Weather Winter Gloves, black.**

Size	Gloves
Small	17-20cm
Medium	20-22cm
Large	22-25cm
X Large	25-28cm

**New!**

Measure around your hand with a tape measure across your palm.



## Dexshell Ultralite Touchscreen Gloves

Dexshell's lightest, most flexible and dextrous waterproof glove yet. They're still 100% waterproof, windproof, and breathable, so your hands stay warm and dry, but a new lamination technique makes the fabric stretchy, for a more comfortable fit. Extra grip dots have been added to the palms to ensure you can hold items safely. Touchscreen compatible Sizes: S, M, L, XL.

**6381 Ultralite Touchscreen Waterproof Glove.**

**WATER PROOF**



Size	Gloves
Small	17-20cm
Medium	20-22cm
Large	22-25cm
X Large	25-28cm

Touchscreen compatible

Measure around your hand with a tape measure across your palm.







## DexShell DEXLOK Wading Pro Socks

If you're sailing, fishing, or working outdoors, Dexshell's knee-high 'Wading Pro' socks will ensure your feet stay dry, even in deep water, spray, or torrential rain. In addition to the waterproof and breathable Porelle® membrane, the patented Dexlok® cuff provides a seal against your skin to prevent water seeping in over the top. The fabric is soft and stretchy too, and is lined with merino wool, for warmth and all-day comfort. Sizes: S, M, L, XL.

**6356 DEXLOK Wading Pro Socks.**



WATER PROOF

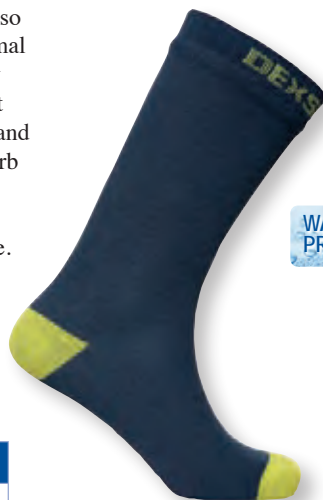
Size	Euro	UK
Small	36-38	3-5
Medium	39-42	6-8
Large	43-46	9-11
X Large	47-49	12-14



## DexShell Ultra Flex Waterproof Ankle Sock

This is DexShell's thinnest waterproof sock, so much so that it feels just like a normal sock. This sock is not only waterproof but lightweight and breathable. Designed and developed to provide superb flexibility and maximum comfort. Suitable for all activities and everyday use. Sizes: S, M, L, XL.

**6639 Ultra thin socks, navy.**



WATER PROOF

Size	Euro	UK
Small	36-38	3-5
Medium	39-42	6-8
Large	43-46	9-11
X Large	47-49	12-14

## DexShell Terrain Walking Socks

New!

Constructed with DexShell's patented three-layer, four-way stretch technology, the Terrain Walking Socks are woven with merino wool yarn for both the inner and outer layers. This creates an authentic, luxurious feel with the utmost warmth and performance, as well as the anti-blister and anti-microbial benefits inherent in merino wool. These waterproof and breathable mid-calf length socks are designed with a cushioned bottom and elastic arch support, making them the best-in-class outdoor socks for tough hiking in arduous terrain and weather conditions.

Sizes: S, M, L, XL.

**New! 6382 DexShell Terrain Walking Socks, black/grey.**



WATER PROOF

Size	Euro	UK
Small	36-38	3-5
Medium	39-42	6-8
Large	43-46	9-11
X Large	47-49	12-14



## DexShell Waterproof Socks

Close-fitting and waterproof all the way up. The tops also incorporate DexShell's patented in-cuff seal system which significantly reduces the ability of splashed water to seep into the top. The fabric has been designed to stretch both lengthways as well as widthways for a supremely comfortable fit. The inner layer is 40% Merino wool for warmth. Sizes: S, M, L, XL. **6352 Mid-calf waterproof sock,**



WATER PROOF

Size	Euro	UK
Small	36-38	3-5
Medium	39-42	6-8
Large	43-46	9-11
X Large	47-49	12-14

## DexShell Waterproof Beanies

An excellent piece of performance headwear containing DexShell's patent construction technology to keep you dry and warm. A quiet (non rustle) and comfortable fit with a fine micro fleece fabric inner and close-fit brim band to give a snug fit that resists the elements. Outer shell: 100% acrylic with waterproof and breathable membrane. One size fits all.

WATER  
PROOF



6354 DexShell Beanie Hat, black, one size.



6355 DexShell Beanie Hat, grey, one size.

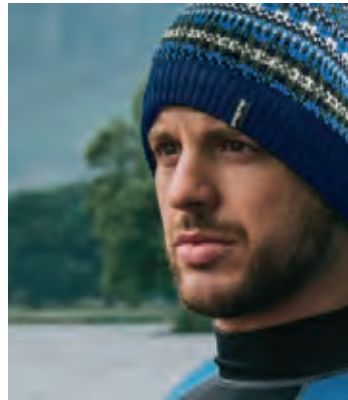


6577 DexShell Waterproof Beanie, olive.

WATER  
PROOF

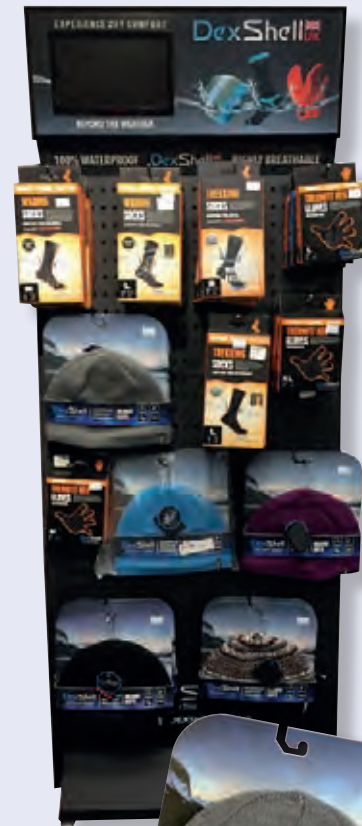


6378 Dexshell Waterproof Fair Isle Beanie, blue.



## FREE Display Stand

Available when you buy 40 units.  
Call us on 01932 244396 for details.



Wool  
blend

WATER  
PROOF



6379 Dexshell Wool Blend Beanie, Navy.



6380 Dexshell Wool Blend Beanie, Black.



## Dexshell Microfleece Beanie

Black microfleece fabric inside and out is super-soft and comfortable, and very warm.

6357 DexShell Waterproof Fleece Beanie, black.

WATER  
PROOF



All DexShell products come in smart, easy to display packaging.



Our acquisition, in 2022, of the SDL Imports brand and product range enabled us to offer customers of both companies a much-increased range of products to choose from. In some cases, particularly items of nautical and seaside décor, our ranges overlapped and we had to consider how best to feature these products in the catalogue without unnecessary duplication and confusion, especially for customers ordering their regular lines.

In this section, you will find all the products that are uniquely SDL Imports, such as wildlife, resin fantasy figures, cloisonné boxes, and hats. Any SDL items that closely matched our existing nautical offering have moved to join our established ranges elsewhere in the catalogue:

**Galileo Thermometers** (Pages 38-39)

**Brassware** (Pages 33-34)

**Model Boats & Ships** (Pages 45-53)

**Lighthouses** (Pages 212-213)

**Puffins** (Page 204)

**Fridge Magnets** (Pages 239-241)

*See the full range together at  
[www.nauticalia-trade-sales.com/SDL](http://www.nauticalia-trade-sales.com/SDL)*

