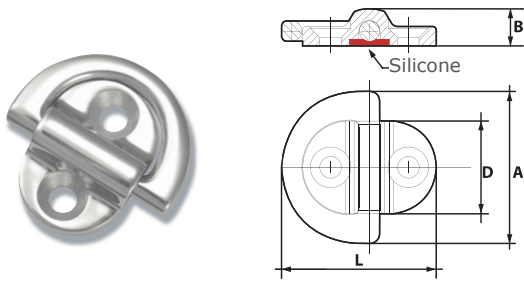
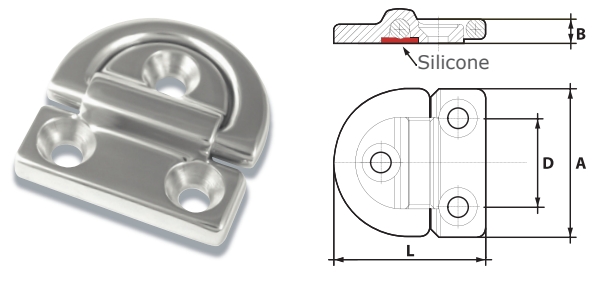


# FOLDING PAD EYES

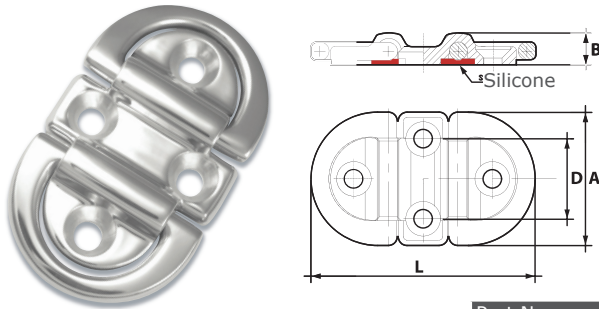
## FOLDING PAD EYE RANGE



HT60064545 (6mm)



HT60064546 (6mm)  
HT60085961 (8mm)  
HT60010757 (10mm)

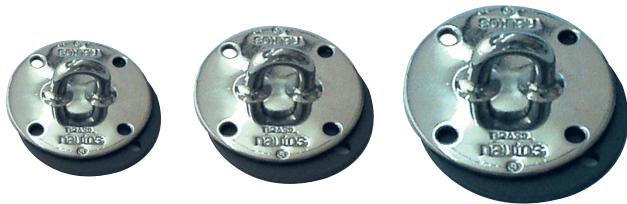


HT60064587 (6mm)  
HT60085999 (8mm)  
HT60010751 (10mm)

Part No.	Description	A (mm)	B (mm)	D (mm)	L (mm)	Break Load (kg)	SWL (kg)
HT60064545	6mm Single	45	11	27.5	45.75	1600	800
HT60064546	6mm Single	45	11	27	46.5	2700	1350
HT60064587	6mm Double	45	11	27	87	2700	1350
HT60085961	8mm Single	59	14	35	61	4500	2250
HT60085999	8mm Double	59	14	35	99	4500	2250
HT60010757	10mm Single	75	17.5	45	77	9000	4500
HT60010751	10mm Double	75	17.5	45	126	9000	4500

# PAD EYES & BLOCK STAND UP BASES

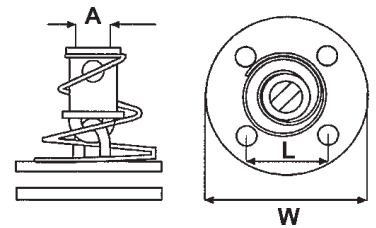
## FIXED PAD EYE RANGE



HT91058

HT91059

HT91060



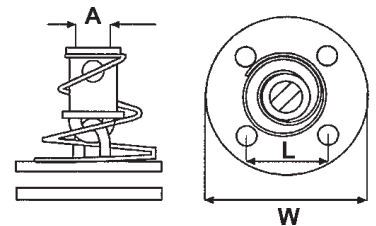
Part No.	Description	L (mm)	H (mm)	W (mm)	Fixing (mm)	Break Load (kg)
HT91058	Stainless Pad Eye & Alloy Underdeck Pad (5mm)	31	14	55	5	1500
HT91059	Stainless Pad Eye & Alloy Underdeck Pad (6.5mm)	37	20	64	6	2800
HT91060	Stainless Pad Eye & Alloy Underdeck Pad (8mm)	45	26	77	8	3800



HT91043

HT91044

HT91045

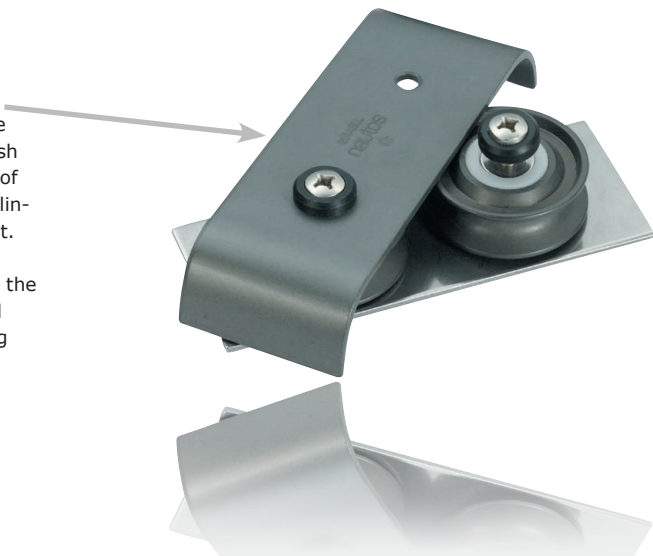


Part No.	Description	A (mm)	L (mm)	H (mm)	W (mm)	Fixing (mm)
HT91043	Stainless Stand Up Base & Alloy Underdeck Pad	10	31	28	55	5
HT91044	Stainless Stand Up Base & Alloy Underdeck Pad	13	37	34	64	6
HT91045	Stainless Stand Up Base & Alloy Underdeck Pad	16	45	38	77	8

# DECK ORGANISERS

## INDEPENDANT FIXING

Fixing screws are independent to the closing ones. This gives a better finish to the boat's interior, with the head of the screw coming through the head lining, rather than bolt, washer and nut. This construction also aids servicing and makes it possible to personalise the organiser, combining aluminium and composite sheaves without removing the fixing screws.



## DECK ORGANISER RANGE



HT91200  
HT91201  
HT91206  
HT91207  
HT91212  
HT91213

HT91202  
HT91203  
HT91208  
HT91209  
HT91214  
HT91215

HT91204  
HT91205  
HT91210  
HT91211  
HT91216  
HT91217

Part No.	Description	Sheave Dia (mm)	Line Dia (mm)	Length (mm)	Distance btwn holes (mm)	Width (mm)	SWL (kg)	Break Load (kg)	Fixing Size
HT91200	36mm Double Nylon Sheave	36	10	106	44	38	150	250	6
HT91201	36mm Double Aluminium Sheave	36	10	106	44	38	150	250	6
HT91206	48mm Double Nylon Sheave	48	12	133	57	51	180	360	6
HT91207	48mm Double Aluminium Sheave	48	12	133	57	51	180	360	6
HT91212	60mm Double Nylon Sheave	60	14	156	66	60	250	430	6
HT91213	60mm Double Aluminium Sheave	60	14	156	66	60	250	430	6
HT91202	36mm Triple Nylon Sheave	36	10	150	44	38	150	250	6
HT91203	36mm Triple Aluminium Sheave	36	10	150	44	38	150	250	6
HT91208	48mm Triple Nylon Sheave	48	12	190	57	51	180	360	6
HT91209	48mm Triple Aluminium Sheave	48	12	190	57	51	180	360	6
HT91214	60mm Triple Nylon Sheave	60	14	224	66	60	250	430	6
HT91215	60mm Triple Aluminium Sheave	60	14	224	66	60	250	430	6
HT91204	36mm Quad Nylon Sheave	36	10	194	44	38	150	250	6
HT91205	36mm Quad Aluminium Sheave	36	10	194	44	38	150	250	6
HT91210	48mm Quad Nylon Sheave	48	12	247	57	51	180	360	6
HT91211	48mm Quad Aluminium Sheave	48	12	247	57	51	180	360	6
HT91216	60mm Quad Nylon Sheave	60	14	292	66	60	250	430	6
HT91217	60mm Quad Aluminium Sheave	60	14	292	66	60	250	430	6

# DECK BUSHES

## TECHNICAL

Material: Glass filled nylon  
Nylon  
Inserts: 316 stainless steel



**ERGO DESIGN**  
New ergonomic design reducing accidental line snags. Modern spark finish

**STAINLESS INSERTS**  
Greater wear resistance with 316 inserts flush fitted



## DECK BUSHES



HT..39



HT.139



HT.239



HT.339



HT.439



HT.539



HT4039



HT4139



HT4239



HT4339



HT4439



HT4539



Part No.	Inside Dia. (mm)	Fixing Hole Size (mm)	Fixing Spacing (mm)	Weight (g)
HT..39	9	19	3	28
HT.139	20	33	3	44
HT.239	12	22	3	31
HT.339	15	25	3	36
HT.439	8	13	-	-
HT.539	13	16	-	-
HT4039	6	19	3	28
HT4139	20	33	3	44
HT4239	11	22	3	31
HT4339	13	25	3	36
HT4439	6	13	-	-
HT4539	13	16	-	-

# DECK FAIRLEADS

## TECHNICAL

Material: Glass filled nylon  
 Nylon  
 Aluminium  
 Inserts: 316 stainless steel

LINE CONTROLS



**ERGO DESIGN**  
 New ergonomic design reducing accidental line snags. Modern spark finish

**FIXING BORES**  
 Allows flush mounting of fasteners with large counter sinks taking a wider variety of fastening

**STAINLESS INSERTS**  
 Greater wear resistance with 316 inserts flush fitted



## FAIRLEADS



HT..52



HT.152



HT.252



HT.452



HT.182



HT.282



HT4052



HT4152



HT4252



HT4452



HT4282



HT.282ALU



HT91070

Aluminium  
 Hard anodised



Part No.	Inside Dia. (mm)	Fixing Hole Size (mm)	Fixing Spacing (mm)	Weight (g)
HT..52	7	3	15	3
HT.152	14	4	25	8
HT.252	19	5	34	28
HT.452	11	3	18	4
HT.182	7	4	23	4
HT.282	9	4	23	6
HT4052	6	3	15	4
HT4152	13	4	25	12
HT4252	21	5	34	32
HT4452	10	3	18	6
HT4182	5	4	23	5
HT4282	6	4	23	8
HT.282ALU	6	4	23	12
HT91070	20	5	30	16



# HATCH COVERS



## IMPROVED DESIGN HATCH COVER

**ERGO PROFILED HANDLE**  
New ergonomic design reducing accidental foot catch release

**SEALED THREADS**  
With the internal hatch lip seal the inner rim (and fixing holes) are sealed giving water tight security without the use of extra sealant.



### HATCH RANGE



HT.337  
HT.337W



HT.537  
HT.537W

HT338 Seal ring for HT.337  
HT.538 Seal ring for HT.338



HT.337 -BAG  
HT.337W -BAG  
HT.537-BAG  
HT.537W -BAG  
Hatch cover complete with storage bag



HA-BAG-KIT  
Hatch bag kit to fit to existing Holt hatch covers



Part No.		Fixing Hole Size (mm)	Cut Out Size (mm)	Opening Size (mm)	'O' Ring Required	Weight (g)
<b>HT.337</b>	Small black hatch cover	3	110	100	HT338	62
<b>HT.337W</b>	Small white hatch cover	3	110	100	HT338	62
<b>HT.537</b>	Med. black hatch cover	3	157	145	HT538	111
<b>HT.537W</b>	Med. white hatch cover	3	157	145	HT538	111
<b>HT.338</b>	Rubber sealing ring for HT 337/337W	-	-	-	-	-
<b>HT.538</b>	Rubber sealing ring for HT 537/537W	-	-	-	-	-
<b>HT.337-BAG</b>	Small black cover and rim with hatch bag	-	-	-	-	-
<b>HT.337W-BAG</b>	Small white cover and rim with hatch bag	-	-	-	-	-
<b>HT.537-BAG</b>	Med. black cover and rim with hatch bag	-	-	-	-	-
<b>HT.537W-BAG</b>	Med. white cover and rim with hatch bag	-	-	-	-	-
<b>HA-BAG-KIT</b>	Bag only with fixing screw	-	-	-	-	-

# BUNGS

### BUNG RANGE



HPN242



HPN243



HPN245



HPN246

Part No.	Description	Fixing Hole Size (mm)	Cut Out Size (mm)	Weight (g)
HPN242-BLACK	drain bung, 25mm - black	4	25	12
HPN242-WHITE	drain bung, 25mm - white	4	25	12
HPN243-WHITE	drain bung, 30mm - white	4	30	16
HPN243-BLACK	drain bung, 30mm - black	4	30	16
HPN245-WHITE	drain bung, 40mm - white	4	40	26
HPN245-BLACK	drain bung, 40mm - black	4	40	26
HPN246-WHITE	drain bung, 50mm - white	5	50	35
HPN246-BLACK	drain bung, 50mm - black	5	50	35

HT423?  
HT323?

# BUOYANCY BAGS

## BUOYANCY BAG RANGE



SB2101



SB2102



SB2103



SB2104



SB2111



SB2112



SB2202



SB2302



SB2402



SB2502



SB2602



SB2702



SB2802



SB2902 Optimist Class Racing Buoyancy Bag  
Hard Wearing woven Nylon with extended inflation valve



SB2903 Optimist Class Buoyancy Bag  
PVC backed nylon.

HA2002?

HA2003?

HULL FITTINGS

Part No.	Description	Size (cm)	Size (inches)	Buoyancy (kg)	Weight (g)
SB2101	Shaped Bow Bag - PVC	83 x 91.5 x 35.5	33 x 36 x 14	158.7	673
SB2102	Pillow Bag - PVC	116.7 x 25.4	46 x 10	50.8	380
SB2103	Shaped Stern Bag - PVC	91.5 x 76 x 53.3 x 30.5	36 x 30 x 21 x 12	124.7	765
SB2104	Pillow Bag - PVC	152 x 25	60 x 10	72.0	486
SB2111	Shaped Baby - PVC	40 x 40.6 x 40.6	16 x 16 x 16	42.5	255
SB2112	Pillow Bag - PVC	140 x 45.6	55 x 14	80.0	730
SB2202	Pillow Bag - PVC	55.8 x 22.8	22 x 9	18.1	181
SB2302	Pillow Bag - PVC	91.5 x 30.5	36 x 12	45.0	396
SB2402	Pillow Bag - PVC	99 x 23	39 x 9	34.0	325
SB2502	Pillow Bag - PVC	76 x 15	30 x 6	11.3	163
SB2602	Pillow Bag - PVC	101.5 x 15	40 x 6	15.8	189
SB2702	Pillow Bag - PVC	45.7 x 15	18 x 6	6.8	91
SB2802	Pillow Bag - PVC	99 x 42	39 x 16	44.0	375
SB2902	Optimist Race Bag IOD- long nozzle (Red)	92 x 29	39 x 16	48	223
SB2903	Optimist Standard Bag IOD- (White)	92 x 29	39 x 16	48	223

# STAY ADJUSTERS

## STAIN-LESS FORMED

316 Stainless formed with vernier adjustment for precise rig control

## CLEVIS PINS

All stay adjusters come complete with two clevis pins



## FAST-PINS

Allows fast adjustment of shroud height.



### STAY ADJUSTER RANGE



HT4172



HT4272



HT4372



HT4472



HT4772HT



HT4972



HT5005

HT5006

Part No.	Pin Dia. (mm)	Adjustment Range (mm)	Increments (mm)	Internal Width (mm)	Weight (g)
HT4172	5	52	9	8	46
HT4272	5	64	3	9	41
HT4372	5	60	9	8	23
HT4472	5	69	9	8	39
HT4772HT	6	80	5	10	64
HT4972	5	64	4	8	38
Part No.	Dia. (mm)	Useable Length (mm)	Overall Length (mm)	Suitable For	Weight (g)
HT5005	5	12.5	26.5	HA4272	6.3
HT5006	6	15	29	HA4772HT	8.4

# U-BOLTS & ANCHOR PLATES

### U-BOLTS & ANCHOR PLATES



HT4371



HT4471



HT4671



HT4871X



HT4001E



HT4025  
HT4025S



HT4107S  
HT4107



HT4124



HT4171



HT4225

Part No.	Rod size (mm)	Dist. Betwn. Fix. Ctre. (mm)	Min. Height (mm)	Weight (g)	Overall Length (mm)	Thread Length (mm)
HT4371	5	28	10	24	42	20
HT4471	6	38	14	54	58	25
HT4671	6	38	26	53		
HT4871X	6	28	7	62	48	25
Part No.	Length (mm)	Width (mm)	Thickness (mm)	Hole Ctrs. (mm)	Slot/tenon (mm)	Weight (g)
HT4001E	-	17	1.7	-	-	79
HT4025	194	16	2	57	-	37
HT4025S	194	16	2 - 4	57	-	50
HT4107	138	22	2	114	-	45
HT4107S	112	22	2	89	-	37
HT4124	150	23	2	129	19	94
HT4171	64	16	2	47	16 x 2	12
HT4225	94	87	1.7	-	-	103

# ANCHOR PLATES

## ANCHOR PLATES



Part No.	Inside Dia. (mm)	Fix Hole Size (mm)	Dist Between Fixings (mm)	Weight (g)
<b>HT4003</b>	9	M5	27 x 16	24
<b>HT4003H</b>	5	M5	27 x 16	24
<b>HT4003M</b>	5	M5	27 x 16	24

# EYE STRAPS

## EYE STRAPS RANGE

316 Stainless



+PT401L

316 Stainless



Part No.	Bore (mm)	Fixing Hole Size (mm)	Hole Centres (mm)	Weight (g)
<b>HT5014</b>	-	4	27	3.2
<b>HT5014F</b>	8	4	27	3.6
<b>HT5015</b>	-	5	33	6.4
<b>HT5015F</b>	10	5	33	8.2
<b>HT5016</b>	-	6	40	12
<b>HT5016F</b>	14	6	40	15
<b>HT4288</b>	8	3	22	1
<b>HT4388</b>	8	4	27	1.5
<b>HT4073</b>	12	5	34	4
<b>HT4035</b>	-	5	-	5
<b>HT4035-6MM</b>	-	6	-	4.7
<b>HPN048-BLACK</b>	5.3	4	32	1
<b>HPN049-BLACK</b>	10	4	39	1.2
<b>HPN049-WHITE</b>	10	4	39	1.2
<b>HPN050-BLACK</b>	25 - flat	4	39	1
<b>HPN69A-BLACK</b>	-	-	38	-
<b>HPN69-BLACK</b>	-	-	50	-
<b>HPN69-WHITE</b>	-	-	50	-
<b>HPN093-WHITE</b>	6	5	-	1
<b>HPN118</b>	4	5	-	1.3
<b>HPN119-BLACK</b>	4	5	-	1.3

HULL FITTINGS

HPN048

HPN049

HPN050

HPN069-WHITE

Lacing Button

HPN093

HPN118 - 2 Way Lacing Button  
HPN119 - 4 Way Lacing Button (shown)

Nylon lacing eyes for weight reduction in less load critical areas

# TRANSOM FITINGS & MAST STEP

## TRANSOM FITTINGS / MAST STEP



Part No.	Description	Fixing Hole Size (mm)	Overall Width (mm)	Weight (g)
<b>HT4019</b>	Transom pintle 7.8mm pin	4	80	67
<b>HT4317</b>	Transom pintle 7.8mm pin	4	32	40
<b>HT4020</b>	Transom gudgeon 8mm hole	5	70	22
<b>HT4022</b>	Transom gudgeon 8mm hole (3 hole fix)	5	70	41
<b>HT91120</b>	Nylon transom gudgeon	5	131	42
<b>HPN055</b>	Acetal retaining clip	4	53	2.5
<b>HT4121</b>	Stainless steel retaining clip	5	78	9
<b>HT91152</b>	Optimist adjustable mast step	6	120	260