

Aero Cleats

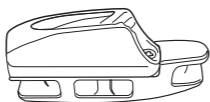
Allow aluminium cleats to be rigged on a rope, for higher loads or demanding conditions. Easy to rig. The position of cleat on the rope can be adjusted without using tools.



CL826 Aero base instructions



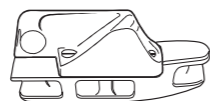
35gm.
1.2oz.



This is
CL826-11 (with CL211 Mk2 silver)
CL826-11AN (with CL211 Mk2 hard anodised)



37gm.
1.3oz.



This is
CL826-18 (with CL218 Mk2 silver)
CL826-18AN (with CL218 Mk2 hard anodised)

Other hand is
CL826-17 (with CL217 Mk2 silver)
CL826-17AN (with CL217 Mk2 hard anodised)

Aero Cleats

1.5x length of CL826

0.8x length of CL826



CL826-11AN / CL82611



CL827-11AN / CL827-11



Aero Cleats	mm Ø	mm	weight (g)
CL826-11 Aero cleat with CL211 Mk2 CL826-11AN Aero cleat with CL211 Mk2AN	3 - 6	A72 B- C17	34
CL827-11 Aero cleat with CL211 Mk1 CL827-11AN Aero cleat with CL211 Mk1AN	3 - 6	A112 B- C19	60
CL828-68 Aero cleat with CL268 CL828-68 Aero cleat with CL268AN	2 - 4	A60 B- C13	19

Three sizes of Aero base can be fitted with a variety of cleats. Please ask for details.

Link Lok



CL260

CL266

CL271

CL276



4 sizes



CL266

CL260

CL276

CL271

Link Loks	mm Ø	mm	weight (g)
CL260	2 - 5	A31.2 B- C18.5	2.2
CL266	0 - 3	A21.6 B- C6.6	0.5
CL271	4 - 8		27
CL276	3 - 6		9.4



Cleats rigged on a rope



CL223W / CL223

CL230 / CL230AN

CL234W / CL234

CL253 / CL253AN - with nylon spacer

CL223 - 2:1

Cleats for ropes to 8mm	Material	mm Ø	mm	mm Ø
CL223W / CL223	Nylon	3 - 6	A52 B- C18	18
CL230 / CL230AN	Aluminium	3 - 6	A82 B66 C18	35
CL234W / CL234	Nylon	6 - 12	A78 B- C2	45
CL253 / CL253AN with nylon spacer	Aluminium	4 - 8	A89 B- C10	46
CL264AN / CL264	Aluminium	4 - 6	A118 B- C28	47



CL264AN / CL264



CL253AN

When precise holding power really counts

CLEATS FOR ROPES TO 4MM



CLEATS FOR ROPES TO 6MM 1/4"



SIDE ENTRY CLEATS FOR ROPES TO 6MM



Cleats for ropes to 4mm	Material	mm Ø	mm	mm Ø
CL263 & CL263W White Micro	Nylon	1 - 4	A44 B24 C13	4
CL268 & CL268AN Hard Anodised Racing Micros	Aluminium	1 - 4	A44 B24 C13	4
CL270 & CL270AN Hard Anodised Racing Micro with Becket	Aluminium	1 - 4	A44 B24 C13	4
CL274 & CL274W Open Micros	Nylon	1 - 4	A33 B24 C13	3
CL275 & CL275AN Open Racing Micro	Aluminium	1 - 4	A33 B24 C13	3
CL277 & CL277AN Hard Anodised Side entry Racing Micros with Becket (Starboard)	Aluminium	1 - 4	A44 B24 C14	3
CL823 Tapered Pad for CL263, CL268, CL270, CL277 & CL278	Polypropylene	-	A47 B- C19	4

Cleats for ropes to 6mm	Material	mm Ø	mm	mm Ø
CL204 / CL204W Mini	Nylon	3 - 6	A52 B36 C17	4
CL213 Fine Line (Starboard)	Nylon	2 - 5	A70 B49 C21	4
CL214 Fine Line (Port)	Nylon	2 - 5	A70 B49 C21	4
CL222 / CL222AN Hard Anodosied Racing Mini	Aluminium	3 - 6	A48 B36 C15	4
CL232	Nylon	3 - 6	A35 B35 C36	4
CL241 / CL 241AN	Aluminium	3 - 6	A70 B49 C21	4
CL258 Racing Fine Line (Starboard)	Aluminium	3 - 6	A70 B49 C21	4
CL259 / CL259AN Racing Fine Line (Port)	Aluminium	3 - 6	A70 B49 C21	4
CL273 / CL273AN	Aluminium	3 - 6	A70 B49 C21	-
CL802 Tapered Pad for CL204 & CL222	Polypropylene	-	A57 B- C21	4

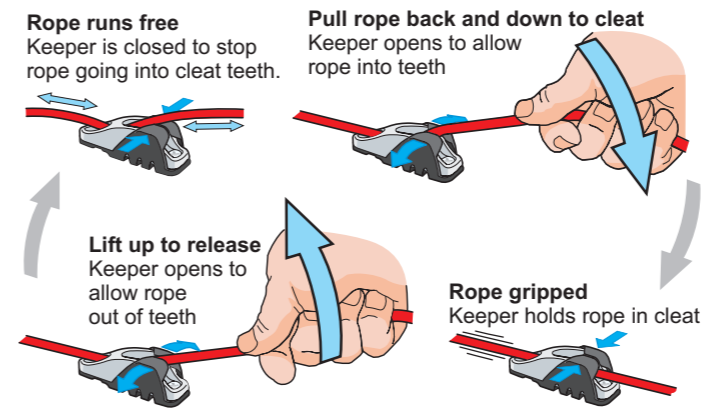
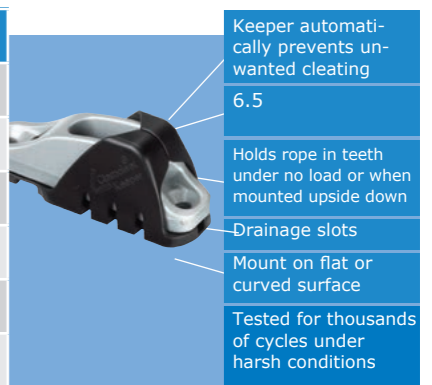
Side entry Cleats for ropes to 6mm	Material	mm Ø	mm	mm Ø
CL217 Mk1 / CL217AN MK1 Side entry (Starboard)	Aluminium	3 - 6	A82 B66 C18	5
CL217 Mk2 Side entry (Starboard)	Aluminium	3 - 6	A55 B27 C17	4
CL217 Mk2AN Hard Anodised Side entry (Starboard)	Aluminium	3 - 6	A55 B27 C17	4
CL218 Mk1 Side entry (Port)	Aluminium	3 - 6	A82 B66 C18	5
CL218 Mk1AN Hard Anodised Side entry (Port)	Aluminium	3 - 6	A82 B66 C18	5
CL218 Mk2 Side entry (Port)	Aluminium	3 - 6	A55 B27 C17	4
CL218 Mk2AN Hard Anodised Side entry (Port)	Aluminium	3 - 6	A55 B27 C17	4

CLEATS FOR ROPES TO 6MM 1/4"



Special rivets are available for the CL211 Mk2, if required.

Part No.	mm Ø	mm Ø	mm Ø	mm Ø
CL814 Keeper for CL203, CL211 Mk1, CL211 Mk1AN, CL217 Mk1m, CL218 Mk1, CL236 & CL236AN	3 - 6	5	4.8	5
CL816 Cage for CL203, CL211 Mk1, CL211 Mk1AN, CL236 & CL236AN (Requires CL814 Keeper)	-	-	-	-
CL818 Tapered Pad for CL203, CL211 Mk1, CL211 Mk1AN, CL217 Mk1, CL218 Mk1, CL236, CL236AN, CL704 & CL704AN	3 - 6	5	4.8	5
CL815 Keeper for CL211 Mk2, CL211 Mk2AN & CL211/S2	3 - 6	4	4.2	4
CL817 Cage for CL211 Mk2 & CL211 Mk2AN (Requires CL815 Keeper)	-	-	-	-
CL819 Tapered Pad for CL203, CL211 Mk2, CL211 Mk2AN, CL211/S2, CL217 Mk2 & CL218 Mk2	3 - 6	4	4.2	4



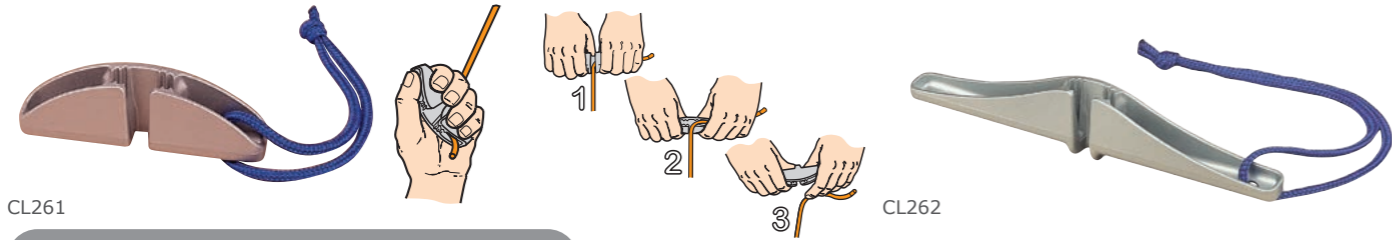
Cleats for ropes to 6mm	Material	mm Ø	mm	mm Ø	mm Ø
CL203 Junior	Nylon	3 - 6	A82 B66 C18	-	4
CL203W White Junior	Nylon	3 - 6	A82 B66 C18	-	4
CL211 Mk1 Racing Junior Mk1	Aluminium	3 - 6	A82 B66 C18	-	5
CL211 Mk1AN Hard Anodised Racing Junior Mk1	Aluminium	3 - 6	A82 B66 C18	-	5
CL211 Mk2 Racing Junior Mk2	Aluminium	3 - 6	A55 B27 C17	-	4
CL211 Mk2AN Hard Anodised Racing Junior Mk2	Aluminium	3 - 6	A55 B27 C17	-	4
CL702 Aluminium Boom Cleat	Aluminium	3 - 6	A82 B66 C18	-	5
CL702AN Hard Anodised Aluminium Boom Cleat	Aluminium	3 - 6	A82 B66 C18	-	5
CL704 Racing Junior with Becket	Aluminium	3 - 6	A82 B66 C18	-	5
CL704AN Hard Anodised Racing Junior with Becket	Aluminium	3 - 6	A82 B66 C18	-	5

Cleats for ropes to 6mm	Material	mm Ø	mm	mm Ø	mm Ø
CL232 Cub	Nylon	3 - 6	A35 B35 C36	-	4
CL241 Racing Sail Line Cleat	Aluminium	3 - 6	A70 B49 C21	-	4

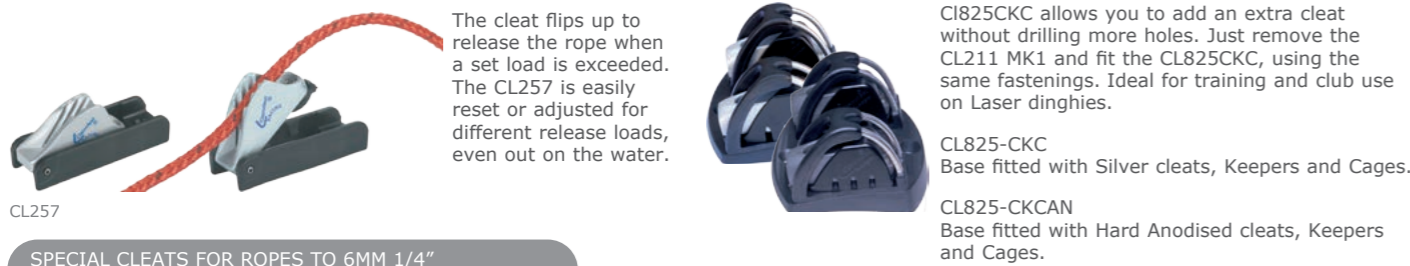
WINDSURFING CLEATS



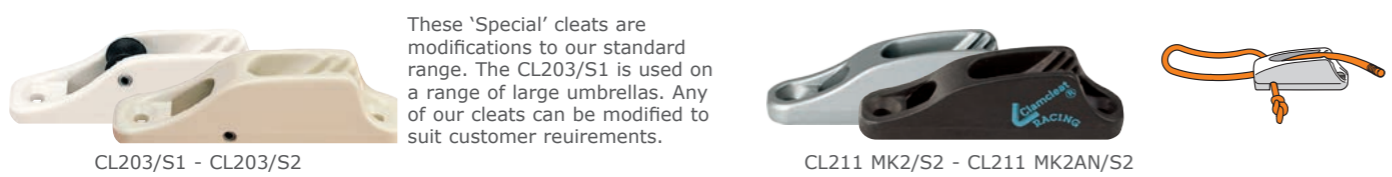
POWER GRIP CLEATS



AUTO-RELEASE GRIP



SPECIAL CLEATS FOR ROPES TO 6MM 1/4"



Cleats for ropes to 8mm	Material	mm Ø	mm	mm Ø	mm Ø
CL253 Trapeze and Vang Cleat	Aluminium	4 - 8	A89 B70 C18	-	-
CL253AN Hard Anodised Trapeze and Vang Cleat	Aluminium	4 - 8	A89 B70 C18	-	-
Windsurfing Cleats					
CL244 Boom Cleat and Clamp	Aluminium + Nylon	3 - 6	A58 B _ C _	-	-
CL247 Compact Twin Sheave Cleat	Aluminium	3 - 6	A53 B31 C40	5	-
CL248 Cleat with Hook and 3 Sheaves	Aluminium	3 - 5	A69 B _ C40	-	-
CL250 The Gap Closer	Aluminium	3 - 5	A84 B11+29 C48	5	-
Power Grip Cleats					
CL261 Power Grip 1	Aluminium	3 - 6	A95 B _ C17	-	-
CL262 Power Grip 2	Aluminium	3 - 6	A189 B _ C17	-	-
Auto-release Cleat					
CL257 Auto-Release Racing Mini	Aluminium + Acetal	4 - 6	A68 B36 C24	4	4
CL825-CKC	Aluminium	3 - 6		5	5
CL825-CKCAN	Aluminium	3 - 6		5	5
Special Cleats for ropes to 6mm					
CL203/S1 Roller Fairlead White Junior	Nylon	3 - 6	A82 B66 C18	-	4
CL203/S2 White Junior with Roller	Nylon	3 - 6	A82 B66 C18	-	4
CL211MK2/S2 Racing Junior MK2 with Becket	Aluminium	3 - 6	A55 B27 C17	-	4
CL211MK2AN/S2 Hard Anodised Racing Junior MK2 with Becket	Aluminium	3 - 6	A55 B27 C17	-	4

INSERT CLEATS FOR ROPES TO 6MM 1/4"



The CL712 has been designed to snap-fit into a plastic moulding to combine the strength of an alloy cleat with the lower cost of a moulded component.

Insert Cleats for ropes to 6mm	Material	mm Ø	mm	mm Ø	mm Ø
CL244L Aluminium Insert Cleat with Fairlead	Aluminium	3 - 6	A42 B _ C22	-	-
CL710 Twin Insert Cleat	Aluminium	3 - 6	A48 B _ C13	-	-
CL712 Small Insert Cleat	Aluminium	3 - 5	A28 B _ C11	-	-
CL716 Very Small Insert Cleat	Aluminium	3 - 4	A24 B _ C11	-	-

CLEATS FOR 4 - 8MM ROPES



CLEATS FOR 4 - 8MM ROPES	Material	mm Ø	mm	mm Ø	mm Ø
CL209	Nylon	4 - 8	A73 B55 C19	5	4.8
CL215 / CL215W	Nylon	4 - 8	A38 B27 C43	5	4.8
CL231	Nylon	4 - 8	A88 B55 C22	5	4.8
CL254 / CL254AN	Aluminium	4 - 8	A70 B55 C19	5	4.8
CL803	Polypropylene	-	A79 B- C24	5	4.8

CLEATS FOR 6 - 10MM ROPES



CLEATS FOR 6 - 10MM ROPES	Material	mm Ø	mm	mm Ø	mm Ø
CL202	Nylon	6 - 10	A74 B51 C79	6	6.3
CL206	Nylon	6 - 10	A75 B51 C49	6	6.3
CL207	Nylon	6 - 10	A75 B51 C49	6	6.3

BOLLARDS FOR ROPES TO 16MM 5/8"



CLEATS FOR 6 - 10MM ROPES	Material	mm Ø	mm	mm Ø	mm Ø
CL208	Nylon	6 - 10	A85 B64 C-	6	6.3
CL210	Nylon	10 - 16	A99 B76 C-	8	8

CLEATS FOR 6 - 12MM ROPES



CLEATS FOR 6 - 12MM ROPES	Material	mm Ø	mm	mm Ø	mm Ø
CL201	Nylon	6 - 12	A95 B72 C28	6	6.3
CL219	Aluminium	6 - 12	A90 B72 C27	6	6.3
CL219AN	Aluminium	6 - 12	A90 B72 C27	6	6.3
CL228	Nylon	6 - 12	A114 B72 C30	6	6.3
CL 804	Polypropylene	-	A103 B- C34	6	6.3

CLEATS FOR 10 - 16MM ROPES



CLEATS FOR 10 - 16MM ROPES	Material	mm Ø	mm	mm Ø	mm Ø
CL205	Nylon	10 - 16	A122 B95 C36	8	
CL220	Aluminium	12 - 16	A118 B95 C37	8	
CL805	Polypropylene	-	A131 B- C45	8	

SPRING GATE CLEATS



SPRING GATE CLEATS	Material	mm Ø	mm	mm Ø	mm Ø
CL237	Nylon	6 - 12	A95 B72 C40	6	6.3
CL238	Aluminium	6 - 12	A90 B72 C40	6	6.3
CL240	Aluminium	12 - 16	A118 B95 C50	8	

SAIL CLEATS AND LINE-LOK™



The CL221 is supplied complete. Other cleats are available with or without backplates and rivets.
The CL212A prevents the CL212 snagging in shrouds or other parts of the rigging.

Sail Cleats and Line-Lok™	Material	mm Ø	mm	mm Ø	mm Ø
CL212 Leech Line Cleat	Nylon	2 - 5	A70 B49 C21	4	-
CL212A Shield for CL212	Nylon	-	A71 B49 C29	4	-
CL214W Fine Line Cleat (Starboard)	Nylon	2 - 5	A70 B49 C21	4	-
CL221 Dingy Leech Line Cleat	Nylon	0 - 3	A43 B33 C17	3	-
CL233 Sail Line Cleat	Nylon	2 - 6	A57 B _ C34	-	-
CL241 Racing Sail Line Cleat	Aluminium	3 - 6	A70 B49 C21	4.5	-
CL241AN Racing Sail Line Cleat	Aluminium	3 - 6	A70 B49 C21	4.5	-
CL258 Racing Fine Line (Starboard)	Aluminium	3 - 6	A70 B49 C21	4.5	-
CL258AN Racing Fine Line (Starboard)	Aluminium	3 - 6	A70 B49 C21	4.5	-
CL259 Racing Fine Line (Port)	Aluminium	3 - 6	A70 B49 C21	4.5	-
CL259AN Racing Fine Line (Port)	Aluminium	3 - 6	A70 B49 C21	4.5	-
CL267	Nylon + Aluminium	1 - 4	A50 B30 C37	4	
CL269	Nylon	1 - 4	A50 B30 C37	4	
CL273	Aluminium	3 - 6	A70 B49 C21	-	-
CL273AN	Aluminium	3 - 6	A70 B49 C21	-	-

