

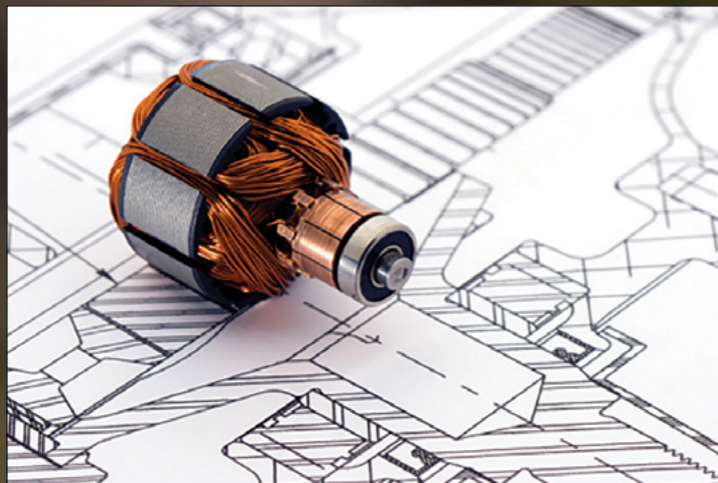
MARINE PRODUCT GUIDE



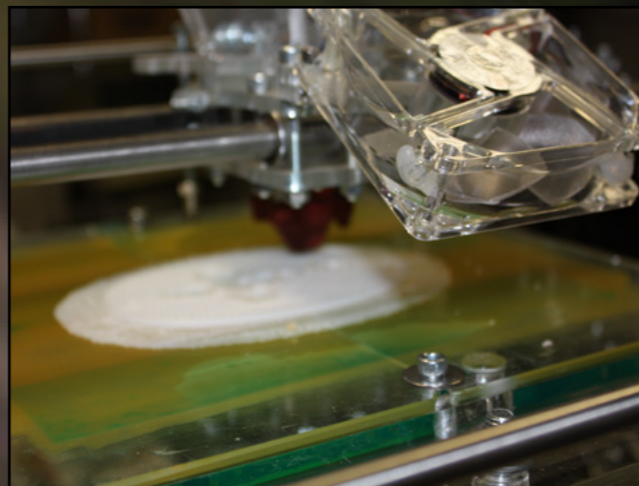
PLEASURE BOAT IS OUR PASSION



LATEST TECHNOLOGY IN DC MOTOR MANUFACTURING



ENGINEERING & RAPID PROTOTYPING: INNOVATIVE R&D DEPT.



PREMIUM CERAMIC DESIGN AND MANUFACTURING



MOST OF OUR STAFF WITH OVER 30 YEARS OF EXPERIENCE WITH US

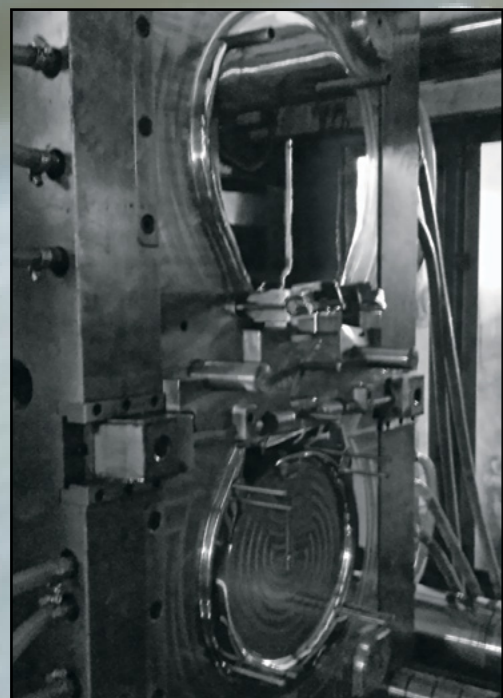


WELLKNOWNFORCOMPLYING WITH CUSTOMERS REQUESTS OEM AND AFTERMARKET

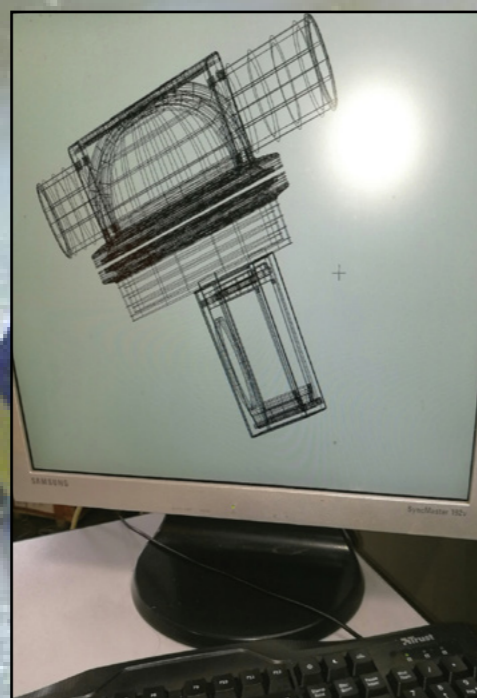


BOATING SAFE WITH US!

LATEST TECHNOLOGY IN INJECTION MOULDING



INNOVATIVE DESIGN ENGINEERING



NEW EXCLUSIVE FULL COLOUR PACKAGING



ALL PRODUCTS ARE 100% TESTED IN OUR MANUFACTURING FACILITY



35 EMPLOYEES AND 2000M² OF PRODUCTION AREA AND WORKSHOP.





Ocean Technologies is a marine equipment manufacturing brand developed by Matromarine Products, an internationally recognized manufacturer of high quality products used in the recreational and commercial marine industries. The worldwide sales, marketing and distribution of Ocean Technologies products is conducted by selected marine professional groups the world over. Nearly 41 years of experience providing solutions for marine equipment need to ensure a high quality standard. We are certified ISO 9001. Today Matromarine is producing not only toilets and pumps, but can boast of a range of over 100 articles for pleasure crafts, many of which are bearing the mark and the approval of R.I.N.A., according to Solas rules. Today the use of advanced technology enables Matromarine to reach the highest International Quality Standards, allowing the creation of highly competitive products that are exported daily to more than 56 countries. Thanks to own experience, innovations and trade expansion in the last few years, Matromarine is now acknowledged as a leading manufacturer in this business field. This is also due to a skilled and versatile organization offering a top qualified and professional management team geared to the needs of the individual customer.



CONTENTS:

| | |
|---------------------------------|----|
| Marine toilets | 4 |
| Wastewater handling | 11 |
| Marine pumps | 14 |
| Marine lights | 21 |
| Blowers and horns | 24 |
| Drawing and service parts | 26 |
| Matromarine worldwide | 31 |

IMPORTANT:
We are manufacturers of all articles shown in the catalogue. Upon request we can supply electric motors and equipments at low tension according to your specification.

Since high quality has always been a signature trademark of all Matromarine products, you can be sure that you'll receive only top marketed quality products.

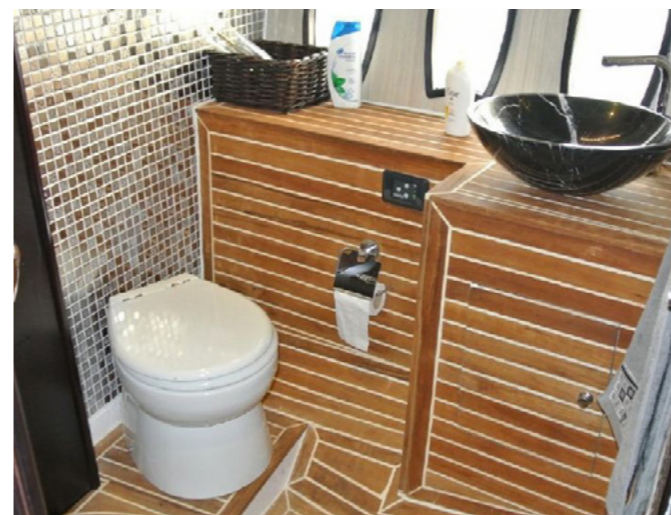
CE marked according to the following Standards:
 EN 55014 Radio disturbance
 ISO 8846 Protection against Ignition of surrounding flammable gases

Marine Toilets & Waste kit

There is a matromarine toilet to suit every boat and budget. Matromarine toilets are the world's best selling designed for ease of service in restricted spaces with all the fastenings facing the front or the top. Performance, reliability, noise level and design have really reached the highest standards.

Available in 3 different basic models: electric standard, electric silent or manual operation, the fine finish and well thought design of these toilets is remarkable. Made of white vitreous porcelain, and with corrosion resistant parts throughout, matromarine toilets are silent, robust and easy to clean. All toilets are built around a simple, very easy and interchangeable macerator jet pump. Reliability has been proven over three decades in a variety of matromarine toilet models and around 700.000 units sold all over the world under Ocean Technologies brand and other private label leaders in the marine field. Each and every toilet is designed, manufactured and manually tested to provide years of trouble free service. These toilets have got a soft close seat to prevent any noise that could disturb the sleep and the peacefulness of the people onboard. Luxury toilets are equipped with Duroplast seat and lid with quick-release as standard. The quick-release system enables the removal of the whole seat unit on the touch of a button. This makes the cleaning of all toilet spots much easier. New flushing system available for the whole range of ocean technologies toilets. This new intake elbow with innovative

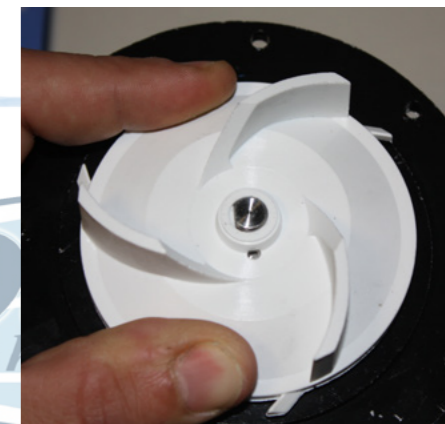
spray nozzle maximizes hygiene thanks to the high pressure water jet. Low water consumption per flow. Now cleaning will be faster and better and finally covering 100% of the bowl rinse surface. The high rotation speed of the new macerator pump and the geometric design of its piping create a great vacuum able to remove water and organic waste from the bowl. The centrifugal pump on the silent version of Luxury and Laguna toilets (picture a) complies with ISO 13857 (machinery safety distances). All toilets are equipped with exclusive seats and can fit an integrated bidet system



NEW SPRAY NOZZLE



NEW PUMP <80 DB.



PICTURE A

Electric Evolution Toilets

Matromarine has realized a range of toilets where performance, reliability, noise level and design have really reached the highest standards. The running cycle is completely automatic and eliminates wastewater through a high-performance pump that allows drainage of waste up to 4 m. in height and at a distance of 40 m. New flush pump integrated in the whole kit with 360° orientable discharge port connection 1" and 1" 1/2. Noise level is optimized against the standard electric toilets and reduced up to 30% lower while performance is increased of 50%. A special new duck valve on the discharge port connection prevents any return of black water.



- Combined pump unit for flushing and wasting
- Extremely silent operation
- New high-performance discharge pump
- Kit conversions are interchangeable with Jabsco, TMC, RM69, SPX etc.
- Reversible pump mounting on left or right handed installation
- All corrosion resistant material for marine use .
- Spray nozzle elbow and soft close seat



| PART. N. | BOWL TYPE | VOLT | AMP | SEAT TYPE | SOFT CLOSE | CONVERSION KIT | DIMENSION IN MM. (width,depth,height) Open=high with seat open | KG | HOSE CONNECTION (ORIENTABLE 360°) |
|------------|-------------|------|-----|------------|------------|----------------|---|----|-----------------------------------|
| 6400000712 | COMPACT | 12 | 17 | 6500000002 | YES | 5600000112 | 335X420X390(670)OPEN | 10 | 25 MM, 38 MM |
| 6400000724 | COMPACT | 24 | 8 | 6500000002 | YES | 5600000124 | 335X420X390(670)OPEN | 10 | 25 MM, 38 MM |
| 6400000812 | COMFORT | 12 | 17 | 6500000004 | YES | 5600000112 | 365X460X385(730)OPEN | 11 | 25 MM, 38 MM |
| 6400000824 | COMFORT | 24 | 8 | 6500000004 | YES | 5600000124 | 365X460X385(730)OPEN | 11 | 25 MM, 38 MM |
| 6400000312 | SPACE SAVER | 12 | 19 | 6500000002 | YES | 5600000112 | 335X420X325(670) | 9 | 25 MM, 38 MM |

Manual toilets:

Our newest design allows the boat owner or service agent to easily replace the existing toilet without having to bore new holes. Can easily substitute Jabsco, RM and many other brands. Fixing holes are same of Jabsco manual Toilet. The toilet may be mounted both above and below the waterline; the fitted pump is a self priming one; the reversible left-handed pump mounting enables to install the toilet indifferently on both sides; waste discharge is possible both over-board and into a holding tank on board; Soft close plastic seat or wooden seat- Gross weight 10 kg



- Kit conversions are interchangeable Jabsco, TMC, RM69, JP, etc.
- Reversible pump mounting on left or right handed installation
- Full sized external seal housing allows quick clean seal replacement and instant access to pump cylinder.
- Angled pump and long stroke for more comfortable operation
- Innovative brake bushing prevents annoying leakage at the handle
- Spray nozzle elbow and soft close seat

| PART. N. | BOWL TYPE | SOFT CLOSE | SEAT | PORT CONNECTIONS | CONVERSION KIT | DIMENSIONS (depth,width,height) |
|------------|-------------|------------|------------|---------------------------|----------------|---------------------------------|
| 6800200700 | Space saver | YES | 6500000002 | inlet. 19 mm outlet 38 mm | 6100000700 | 400x450x295mm |
| 6600200700 | Compact | YES | 6500000002 | inlet. 19 mm outlet 38 mm | 6100000700 | 400x450x340mm |
| 6600000700 | Compact | NO | 6500000001 | inlet. 19 mm outlet 38 mm | 6100000700 | 400x450x340mm |
| 6600200800 | Comfort | YES | 6500000004 | inlet. 19 mm outlet 38 mm | 6100000700 | 460x470x335mm |

Electric Toilet silent: flush pump or electrovalve needs to be ordered apart

Electric silent (hydrovacuum): The new line of fitted design bowls in vitreous china makes this toilet very comfortable and attractive, just like a home toilet. The base is impact resistant. It can be installed either above or below the sea level. Matromarine has realized a range of toilets where performance, reliability, noise level and design have really reached the highest standards. The running cycle is completely automatic and eliminates wastewater through a high-performance pump that allows drainage of waste up to 7 m. in height and at a distance of 70 m.

This hydrovacuum toilet can use an automatic water system or a flush pump installed onboard for water inlet. It is fitted with an electronic switch to regulate automatically water inlet and outlet at 2 different stages: first the bowl is filled up with clear water, and then waste is discharged by leaving the bowl empty and clean. The Luxury and Deluxe model toilets can be installed indifferently with a centralized system or with a single system. Deluxe can also operate as a bidet: in fact, it is possible to supply it equipped with an optional bidet fitting. The water consumption is very low (about 1 – 2,5). Flush pump or electrovalve to be ordered apart. Upon request bowls are available in the following colours: champagne - light green - black -blue. Port connections: Inlet. 19mm. 3/4", Outlet 25/38 1"1/2

| PART. N. | BOWL TYPE | VOLT | AMP | SEAT TYPE | SOFT CLOSE | CONVERSION KIT | DIMENSION IN MM. (width,depth,height) Open=high with seat open | WEIGHT KG | BIDET FITTINGS |
|------------|-----------------|------|-----|------------|------------|----------------|---|-----------|----------------|
| 6600200412 | SPACE SAVER | 12 | 17 | 6500000002 | YES | 5600000712 | 335X420X345(620)OPEN | 9,5 | NO |
| 6600200712 | COMPACT | 12 | 17 | 6500000002 | YES | 5600000712 | 335X420X390(670)OPEN | 10 | NO |
| 6600200724 | COMPACT | 24 | 8 | 6500000002 | YES | 5600000724 | 335X420X390(670)OPEN | 10 | NO |
| 6600200812 | COMFORT | 12 | 17 | 6500000004 | YES | 5600000712 | 365X460X385(730)OPEN | 11 | NO |
| 6600200824 | COMFORT | 24 | 8 | 6500000004 | YES | 5600000724 | 365X460X385(730)OPEN | 11 | NO |
| 6600200912 | LAGUNA | 12 | 19 | 6500000002 | YES | 5500019712 | 340X405X410(720)OPEN | 18 | NO |
| 6600200924 | LAGUNA | 24 | 10 | 6500000002 | YES | 5500019724 | 340X405X410(720)OPEN | 18 | NO |
| 6500002042 | LUXURY LOW | 12 | 30 | 6500000007 | YES | 5500019812 | 365X455X385(790)OPEN | 20 | NO |
| 6500002044 | LUXURY LOW | 24 | 16 | 6500000007 | YES | 5500019824 | 365X455X385(790)OPEN | 20 | NO |
| 6500002242 | LUXURY STD | 12 | 30 | 6500000007 | YES | 5500019812 | 365X455X455(860)OPEN | 21 | NO |
| 6500002244 | LUXURY STD | 24 | 16 | 6500000007 | YES | 5500019824 | 365X455X455(860)OPEN | 21 | NO |
| 6500003212 | DELUXE STANDARD | 12 | 25 | 6500000008 | NO | 5500019812 | 365X455X455(840)OPEN | 21 | YES |
| 6500003224 | DELUXE STANDARD | 24 | 13 | 6500000008 | NO | 5500019824 | 365X455X455(840)OPEN | 21 | YES |



All silent toilets are supplied with IC. Intelligent control system panel 3 function control :Before use,After use, Short use and a Trimmer to regulate flow rate from 1 to 5 liters.



Alternatively A Rocker switch with Carling components can be supplied

Electric silent compact/ Space saver.

Electric silent comfort.

Deluxe STD. silent



Laguna electric silent soft close seat



Luxury STD "soft close" seat.



Luxury low "soft close" seat.



Electric standard toilets

The well proven and popular electric standard toilets with combined pump unit for flushing and wasting. All metal parts and screws are in stainless steel. The base is in impact resistant material. It can be installed either above or below the sea level. A special macerator pump allows the expulsion up to 3.50 m in height. Self priming up to 1,5 mt. vertically. Equipped with seat lid and control panel. Port connections: inlet. 19mm. 3/4" and outlet 25/38mm. 1" & 1 1/2". Space saving thanks to the possibility of rotating 90 degrees the pump and provide accessibility for servicing

| PART. N. | BOWL TYPE | VOLT | AMP | SEAT TYPE | SOFT CLOSE | CONVERSION KIT | DIMENSION IN MM. (width,depth,height) Open=height with seat open | KG |
|------------|-------------|------|-----|------------|------------|----------------|---|----|
| 6500000412 | SPACE SAVER | 12 | 17 | 6500000002 | YES | 5500000712 | 335X420X345(630)OPEN | 11 |
| 6500000424 | SPACE SAVER | 24 | 8 | 6500000002 | YES | 5500000724 | 335X420X345(630)OPEN | 11 |
| 6500000712 | COMPACT | 12 | 17 | 6500000001 | NO | 5500000712 | 335X420X390(675)OPEN | 12 |
| 6500000724 | COMPACT | 24 | 8 | 6500000001 | NO | 5500000724 | 335X420X390(675)OPEN | 12 |
| 6700000712 | COMPACT | 12 | 17 | 6500000002 | YES | 5500000712 | 335X420X390(675)OPEN | 11 |
| 6700000724 | COMPACT | 24 | 8 | 6500000002 | YES | 5500000724 | 335X420X390(675)OPEN | 11 |
| 6700000812 | COMFORT | 12 | 17 | 6500000004 | YES | 5500000712 | 365X460X385(730)OPEN | 12 |
| 6700000824 | COMFORT | 24 | 8 | 6500000004 | YES | 5500000724 | 365X460X385(730)OPEN | 12 |
| 6500200912 | LAGUNA | 12 | 24 | 6500000002 | YES | 5500019112 | 340X405X410(720)OPEN | 18 |
| 6500200924 | LAGUNA | 24 | 12 | 6500000002 | YES | 5500019124 | 340X405X410(720)OPEN | 18 |
| 6500002412 | LUXURY LOW | 12 | 30 | 6500000007 | YES | 5500003812 | 365X455X385(790)OPEN | 20 |
| 6500002424 | LUXURY LOW | 24 | 15 | 6500000007 | YES | 5500003824 | 365X455X385(790)OPEN | 20 |
| 6500002612 | LUXURY STD | 12 | 30 | 6500000007 | YES | 5500003812 | 365X455X455(860)OPEN | 22 |
| 6500002624 | LUXURY STD | 24 | 16 | 6500000007 | YES | 5500003824 | 365X455X455(860)OPEN | 22 |

All standard toilets are supplied with a one push button flushing for easiness of operation



Electric standard space saver



Electric standard compact



Electric standard comfort



Laguna electric standard



Luxury low



Luxury standard.



ELECTRIC EVOLUTION CONVERSION KIT:



Converts compact and comfort bowl of most toilets with 4 bolt fixing bowls and bolt centres on a 95 mm (3 3/4") diameter circle such as Matromarine, Jabsco, TMC, Raritan, RM69, Johnson Pump, Theford, Lalizas. Included kit contains all necessary parts, such as stainless steel bolts and washers, hose and gaskets and control panel. Space saving thanks to the possibility of rotating 90 degrees the pump and provide accessibility for servicing

CD:5600000112 12V
CD:5600000124 24V.



Conversion kits

Converts compact and comfort bowl of most toilets with 4 bolt fixing bowls and bolt centres on a 95 mm (3 3/4") diameter circle such as Matromarine, Jabsco, TMC, Raritan, RM69, Johnson Pump, Theford, Lalizas. Included kit contains all necessary parts, such as stainless steel bolts and washers, hose and gaskets and in most toilets control panel as well.

Manual

CD:6100000700



Electric standard

CD:5500000712 12V.
CD:5500000724 24V.



Electric silent for flange bowl

CD:5600000712 12V
CD:5600000724 24V.



Suit also all deluxe, luxury bowl manufactured before 2012. and toilets having 4 bolt fixing bowls and bolt centres on a 95 mm

Electric silent new.

CD:550019712-24 12/24V
for Laguna Bowls.
CD:550019812-24 12/24V.
for Luxury/Deluxe bowls



SPARE SEATS:

Compact and comfort version are interchangeable with JABSCO, SPX, TMC, RM69, TMC toilets.

CD:6500000001 wooden seat for space saver, compact and laguna bowls

CD:6500000002 soft close seat for space saver, compact and laguna bowls

CD:6500000004 soft close seat for comfort bowls

CD:6500000007 duroplast soft close seat for luxury bowls

CD:6500000008 Thermosetting top quality material seat with ss hinges for deluxe bowls
can mount bidet fittings 6500000015

CD:6500000013 Thermosetting soft close top quality material seat with ss hinges for luxury bowls

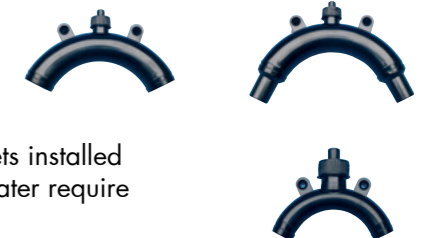


VENTED LOOPS:

CD:6000100015 Port Connection 38

CD:6000100013 Port Connection 25

CD:6000100010 Port Connection 19



Indispensable component for inlet and discharge pipes of manual and electric toilets installed below the waterline. Manual and electric marine toilets flushed with sea or river water require connections through the hull below water level

Y-VALVES:

A universal valve to discharge either overboard or into waste tanks designed for long distance control by means of a push-pull cable. It can be used in three ways: 1) the water from the toilet is flushed into the sea or into the waste tank; 2) the water is discharged from the waste tank into the sea by means of a macerator or on the quay by means of a suction pump; 3) the macerator discharges into the sea or on the quay by means of a suction pump. Can be pad-locked.

CD:6000100025
Port connection 38 mm.



CD:6000200025

Equipped with extra 25 mm straight inlet port and handle extension. Can be operated through bulkhead. 2x Orientable 360 degrees outlet port connections 38 mm



ELECTROVALVE:

For centralized system with fresh water
 CD:6500102012
 CD:6500102024
 Port Connection 1/2 mm hose
 Can be ordered together with all series of electrical silent toilets.



New economy version with the pump body in plastic. Port connection In 13 mm Out 19 mm included
 CD:6500103012



FLUSH PUMP

Newest generation of silent pumps equipped with 4 diaphragms
 Indispensable equipment to supply water on all series of electrical silent toilets.
 Delivery: 12 litres
 CD. 2500001212 12 V.
 CD. 2500001224 24 V



CONTROL PANELS FOR TOILETS

CD:6000000715 for electric std.(manual operation)
 CD:6500002003 for electric silent (automatic operation) with IC control system and level indicator. Extra slim and compatible with frames LEGRAND Vela/Cross
 CD:6500002002 electric silent "Carling" rocker switch (manual operation)
 CD:4500000118 probes for level indicator



CD:6500001702 electric standard with level indicator
 Built in IC Control systems with 2 automatic flush buttons:
 1) Full flush 5 seconds delivery approx. 5 litres of water
 2) Eco flush 2,5 seconds delivery approx. 2,5 litres of water.
 extra slim and compatible with frames LEGRAND Vela/Cross



BIDET:

The new line of fitted design bowls in vitreous china makes this bidet very comfortable and at the same time smart and nice to be seen, just like a home bidet.
 Matromarine manufactures two models of separate bidets designed to match Matromarine deluxe and luxury toilets and to be a complement to any marine bathroom. Same dimension of the luxury toilets.
 Delivered without tap. Fresh water is supplied through a swivel-nozzle fitted into a space in the appliance.



CD:6500000022 Bidet std.

CD:6500000023 Bidet std bevelled

BIDET FOR MARINE TOILETS:

CD:6500000016 1 tap
 CD:6500000017 2 taps
 for space saver, compact, comfort, laguna and all luxury bowls equipped with wooden seat. Soft close system do not match with any bidet system.
 CD:6500000015 mixer tap ONLY for deluxe bowls



Waste Water Treatment:

New updated version of the waste water kit with the macerator pump or diaphragm pump mounted and already connected to the tank. The system includes tank, macerator, (y-valve is be ordered separately in all version), gas tank vent, activated carbon filter and control panel with probe to check the level in the tank. Matromarine holding tank systems are molded from linear low density polyethylene (LLDP) resin. Polyethylene is best-suited for holding tank constructions because of its resistance to corrosion and odor permeation, and it will last much longer than the life of a typical fiberglass hull. ISO/USCG compliance: MATROMARINE models are fully compliant with ISO 8099:2000(E) Standards. Odour-free design: MATROMARINE tanks have extra-heavy wall thickness to prevent odour permeation. Tanks can be fitted with an activated carbon filter that stops unpleasant odours from escaping through the holding tank vent. Multiple tank outlets: most Matromarine models are equipped with two discharge outlets: one is for connection to a deckmounted discharge fitting and the other is for connection to an overboard discharge pump. Leak-proof design: Matromarine one-hose connection is located on top of the tank, thus eliminating all possibility of leakage due to a faulty connection below the liquid level of the tank contents. Our unique diptube design reduces the risk of clogging while keeping the residual contents in the tank to a minimum. New fast connection in strong PVC makes this kit the most easy-mounting and complete system present on the market for the treatment of waste waters. Available also in 24V. version upon request.

Equipped with Macerator already connected to the tank, carbon filter, probe, level indicator, gas tank vent, and 2 fittings carbon filter probe, level indicator, gas tank vent and 2 fittings



Equipped with Diaphragm pump



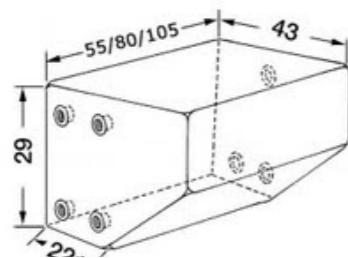
CD. 9400000547 Kit for waste (rectangular) 47 lt.
 CD. 9400000578 Kit for waste (rectangular) 72 lt.
 CD. 9300000550 Kit for waste (rounded shape) 40 lt.
 CD. 9300000575 Kit for waste (rounded shape) 75 lt.
 CD. 94000005112 Kit for waste (rectangular) 112 lt
 CD. 9300000598 Kit for waste (rounded shape) 98 lt.

CD. 9600000547 Kit for waste (rectangular shape) 47 l
 CD. 9600000578 Kit for waste (rectangular shape) 72 l

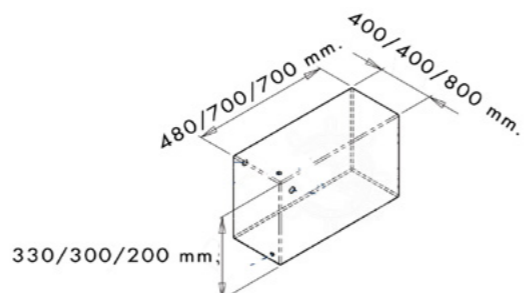


Y-valves needs to be ordered apart for all waste kits

All part. numbers are equipped with 12v. electrical parts. Upon request all models are available also at 24v.



ROUNDED SHAPE



RECTANGULAR SHAPE

POLYTHENE WASTE TANKS.

Complete with 4 dead female unions 3/4" dim. 19/20 mm. and 4 dead female unions 1 1/2" dim 38/40 mm. for rubber gasket. Complies with iso 8099.

- CD. 9100000547 50 lt. 480 x 400 x 330 mm - rectangular
- CD. 9100000578 72 lt. 700 x 400 x 300 mm - rectangular
- CD. 9100005112 112 lt. 700 x 800 x 200 mm - rectangular
- CD. 9000000550 40 lt. 430 x 550 x 290 mm - rounded shape
- CD. 9000000575 75 lt. 430 x 800 x 290 mm - rounded shape
- CD. 9000000598 98 lt. 430 x 1050 x 290 mm - rounded shape



WASTE TANK FOR MANUAL TOILETS

SUITABLE FOR ALL MARINE TOILETS WITH COMPACT BOWLS such as Matromarine, TMC, Groco, jabsco, RAM69, Wilcox Crittenden, Mansfield, Johnson Pump, Thefford



CD. 9000000526 26lt. 500 x 400 x 230 mm.

ACTIVE CARBON FILTER

Complete filter with 3/8" 3/4" ,1" nipples, Manufactured in light alloy and nylon this filter must be installed in the highest possible location along the breather of the tank. Carbon lifetime approx. 1 year.

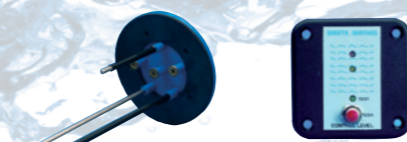
CD. 9000000600 16/19/25 mm



LEVEL INDICATOR:

Probes holder with 5 bushes in which there are 3 stainless steel probes for waste water mixture tank units. Plastic bushes 20 mm long, to avoid risk of short circuit due to the humidity inside the tank. A panel with a scale of 3 leds is advising on the almost full tank. Both holders and panels have VDO connections.

- CD. 4500000140 LEVEL INDICATOR AND PROBES
- CD. 4500000118 PROBE STANDARD
- CD. 4500000119 PROBE LENGHT 20 CM FOR 47 L. TANK.



GREY & BLACK DIAPHRAGM WATER PUMPS:



- Compact and simple design
- Flexible installation
- No filter required
- Can run dry.
- Can pump air/water mixture
- Low power consumption
- Quiet operation
- Meets ISO 8846 EN55014 Standards
- 360 rotational pump body
- Double non-return valve.

A modern diaphragm pump that can be set up in several applications and with different pump motor configurations. It is easy to install as a bilge pump in any leisure craft or anywhere after the drain outlet in the waste water system or directly in the Matromarine waste water tank. No filters required, the pump can run dry, and can also handle a mixture of air and water without difficulty. Perfect for installation in tight spaces, the Laguna shower drain pump can be incorporated into a small boat bilge space. Available in version with double 19/25 mm port connection and 38 mm port connection. 38 mm version is equipped with straight and 360 degrees angled rotational port connection.

| PART. N. | VOLT | AMP | FLOW LPM/MIN | FLOW LPM 1,5 MT | HOSE CONNECTION MM. | DIMENSIONS MM. |
|------------|------|-----|--------------|-----------------|---------------------|----------------|
| 8700101112 | 12 | 4,5 | 22 | 18 | 19-25 (GREY) | 305x195x125mm |
| 8700101124 | 24 | 2,5 | 22 | 18 | 19-25 (GREY) | 305x195x125mm |
| 8700001112 | 12 | 6 | 32 | 26 | 38 (WASTE) | 355x195x125mm |
| 8700001124 | 24 | 3 | 32 | 26 | 38 (WASTE) | 355x195x125mm |

MACERATOR PUMP

Macerator with stainless steel or brass internal pump body or brass and rubber impeller discharge pump - self priming up to 2 mt. vertical lift. - 43 LPM output and max 4 mt. total head - macerates and discharges water and waste mixtures.

MAXI MACERATOR PUMP

Toilet waste macerator pump, 47 min. rated, can discharge tanks up to 2100 litres. Bronze pump body total head up to 5 mt. vertical lift.



| PART. N. | VOLT | AMP | FLOW | FLOW 3MT | CONNECTION IN/OUT | PUMP BODY | DIMENSIONS |
|------------|------|-----|--------|----------|---------------------------|---------------------|--------------|
| 5500001112 | 12 | 12 | 43 LPM | 23 LPM | 38 HOSE BARB1 1/2"/25 MM. | THERMO-POLYMER/S.S. | 240X130X90mm |
| 5500001124 | 24 | 7 | 43 LPM | 23 LPM | 38 HOSE BARB1 1/2"/25 MM. | THERMO-POLYMER/S.S. | 240x130X90mm |
| 5500000912 | 12 | 12 | 43 LPM | 23 LPM | 38 HOSE BARB1 1/2"/25 MM. | BRONZE | 240X130X90mm |
| 5500000824 | 24 | 7 | 43 LPM | 23 LPM | 38 HOSE BARB1 1/2"/25 MM. | BRONZE | 240x130X90mm |
| 5500001012 | 12 | 14 | 47 LPM | 33 LPM | 38 HOSE BARB1 1/2"/25 MM. | BRONZE | 270X130X90mm |
| 5500001024 | 24 | 8 | 47 LPM | 33 LPM | 38 HOSE BARB1 1/2"/25 MM. | BRONZE | 270x130X90mm |





Marine Pumps for Deckwash, Bilge & Refuelling

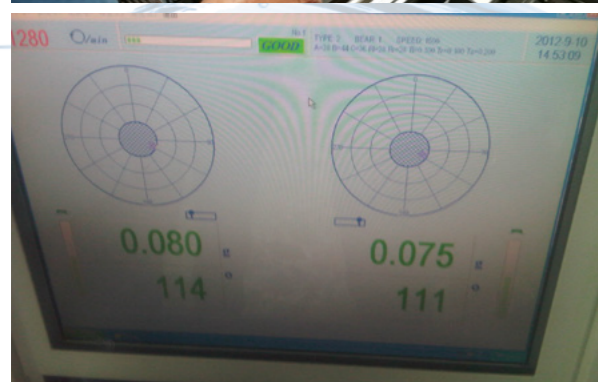
DECK PUMPS: Ideal for deck washing, bilge pumping and pressurized systems Self priming up to 3/5 mt. vertical lift. All versions available upon request with super nitrile impeller.



| PART. N. | MOD. | VOLT | AMP | FLOW/ LPM | FLOW 2 MT HEAD / LPM | HOSE CONNECTION | DIMENSION MM. | PUMP BODY |
|------------|-----------------|------|------|-----------|----------------------|-----------------|---------------|----------------|
| 8500001112 | ECO DECK PUMP | 12 | 8 | 30 | 23 | 19 mm. | 160x120x90 | THERMO-POLYMER |
| 8500001124 | ECO DECK PUMP | 24 | 4 | 30 | 23 | 19 mm | 160x120x90 | THERMO-POLYMER |
| 8500000112 | BRASS DECK PUMP | 12 | 8 | 35 | 28 | 1/2" 19 mm | 160x120x90 | BRASS |
| 8500000124 | BRASS DECK PUMP | 24 | 4 | 35 | 28 | 1/2" 19 mm | 160x120x90 | BRASS |
| 8500000212 | MAXI DECK PUMP | 12 | 12,5 | 45 | 39 | 1/2" 19 mm | 180x120x90 | BRASS |
| 8500000224 | MAXI DECK PUMP | 24 | 6 | 45 | 39 | 1/2" 19 mm | 180x120x90 | BRASS |

Marine Pumps and Accessories

Our company has been undertaking the creation of specific products for different fields of application for almost 40 years. Our line of marine pumps is definitely one of those areas where Ocean Technologies brand has distinguished itself for studying products with particular features dedicated to the environment. Our engineering department collaborates directly with quite all European and many non-European boat manufacturers in order to provide unsurpassed technical support as well as to ensure that Matromarine can always react quickly to the clients needs. During all these years Matromarine has been pioneering a stream of innovation from the early brass pumps to the market leading deck pump, manual bilge pumps and macerator waste pumps. Over the last ten years, we have developed a lot of new products such as the new patented self priming gear pumps with only 1 gear in ptfе as well as new automatic bilge pumps with integrated float switch tested till 200.000 on/off range. All these new products have all been recognized by the marine industry innovation awards. Over the last 10 years, 36 new products have been introduced in our range, driven by a true culture of business innovation. Today Ocean Technologies remains at the leading edge of engineering technology with a strong team using state of the art CAD, software development, data-logging and rapid prototyping equipment. We now manufacture completely a range of about 50 different marine pumps suitable to all applications. Capacities vary from 4LPM TO 140 LPM, allowing the proper matching of the pump to the desired use. All are fitted with heavy-duty motors to provide long service life under heavy use. Our series of marine pumps are employed for bilge pumping systems, wash down applications, deck wash, refuelling and waste water handling. Certified ISO 8846 - EN 55014



DIAPHRAGM PUMP:



- **New Compact and simple design**
- **Flexible installation**
- **No filter required**
- **Can run dry.**
- **Can pump air/water mixture**
- **Low power consumption**
- **Quiet operation**
- **Mets ISO 8846 EN55014 Standards**
- **360° rotational pump body**
- **Non-return valve.**

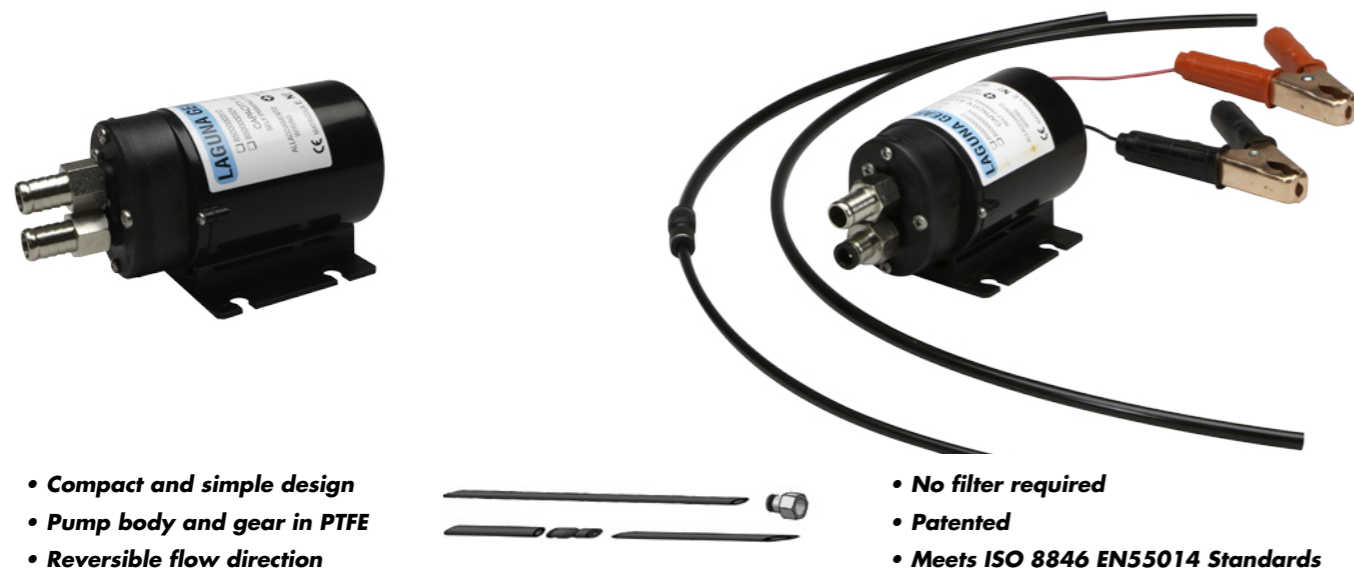
The new modern diaphragm pump that can be set up in several applications and with different pump motor configurations. It is easy to install as a bilge pump in any leisure craft or anywhere after the drain outlet in the waste water system or directly in the Matromarine waste water tank. No filters required, the pump can run dry, and can also handle a mixture of air and water without difficulty. Perfect for installation in tight spaces, the SUPERCOMPACT diaphragm pump can be incorporated into a small boat bilge space. Available in version with double 19 mm port connection and 25 mm port connection. Equipped with straight port connections.

| PART. N. | VOLT | AMP | FLOW/MIN | FLOW 1,5 MT/MIN | HOSE CONNECTION | DIMENSIONS |
|------------|------|-----|----------|-----------------|-----------------|-------------|
| 8700101512 | 12 | 4,5 | 22 | 15 | 19-25 (GREY) | 190x245x125 |
| 8700101524 | 24 | 2,5 | 22 | 15 | 19-25 (GREY) | 190x245x125 |



GEAR AND OIL CHANGER PUMP:

Self priming electric gear pump particularly suitable for the transfer of oil, diesel, antifreeze, water and viscous liquids. Available also in oil changer kit version equipped with 180 cm long wires with end clamp, fuse, and 2 hoses 6 and 8 mm. Can run dry. Pump body in PTFE.



- Compact and simple design
- Pump body and gear in PTFE
- Reversible flow direction

- No filter required
- Patented
- Meets ISO 8846 EN55014 Standards

| PART. N. | MOD. | VOLT | AMP | FLOW/ LPM | CONTINUOUS DUTY | MM. HOSE CONNECTION | DIMENSION | HOSE KIT |
|------------|------------------|------|-----|-----------|-----------------|---------------------|-----------|----------|
| 8500000312 | GEAR PUMP | 12 | 5 | 8 | NO | 3/8" 13 IN/OUT | 140X80 mm | NO |
| 8500010312 | OIL CHANGER PUMP | 12 | 5 | * | NO | 3/8" 13 IN/OUT | 140X80 mm | YES |
| 8500000512 | GEAR PUMP | 12 | 6 | 12 | YES | 3/8" 13 IN/OUT | 140X90 mm | NO |
| 8500000524 | GEAR PUMP | 24 | 3 | 12 | YES | 3/8" 13 IN/OUT | 140X90 mm | NO |
| 8500010512 | OIL CHANGER PUMP | 12 | 6 | * | YES | 3/8" 13 IN/OUT | 140X90 mm | YES |
| 8500010524 | OIL CHANGER PUMP | 24 | 3 | * | YES | 3/8" 13 IN/OUT | 140X90 mm | YES |

SINGLE VERTICAL DIAPHRAGM PUMP.

Well proven design that has been on the market for more than 30 years. This pump for bilge and other purposes has been a faithful mate for many boat owners. Self-priming up to 2 meters. Base and motor support are nylon made, and the movement is carried out on ball bearings. The pump can run dry for longer periods without suffering any damages. Delivered together with filter (pump guard). Capacity 18 l/min. Weight 2,5 Kg. Dimensions: 155x100x150



- Compact and simple design
- Filter 19 MM included
- Can run dry.
- Low power consumption
- Quiet operation
- Meets ISO 8846 EN55014 Standards

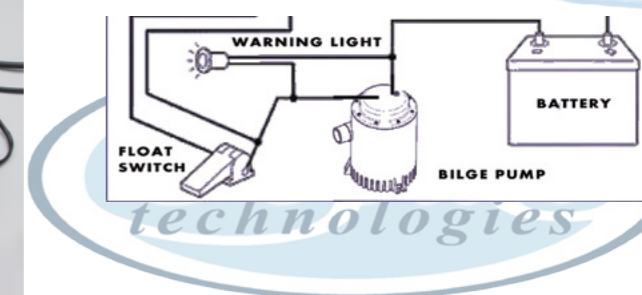
CD:8500101812 12V. 8 AMP.-
 CD:8500101824 24V. 4 AMP.-
 CD:8500001000 Pump guard, Filter.
 Port connections: Inlet, Outlet: 19 mm



Submersible bilge pumps and float switches

Bilge pumping systems including automatic and non-automatic bilge pumps, switches and control. A complete selection of pumps is available for fishing boats, pleasure boats, cruisers, yachts, and commercial boats. Ocean Technologies Submersible Bilge Pumps have the highest standard for the industry and for over 39 years have been tested and approved as standard equipments by leading boat manufacturers.

- Affordable prices
- Whole process production done by us
- 100% tested in our manufacturing facilities
- Compact, efficient, long life motors.
- Ability to run dry for short periods.
- Easy clean snap-lock strainer bases.
- Stainless steel shafts AISI 316
- Completely submersible.
- Marine grade blocked wiring.
- Rust and corrosion protection.
- Silent and vibrationless operation.
- CE and ISO 8844 certification.
- Ignition protection.



SUBMERSIBLE BILGE PUMPS: New series of marine water-cooled housing submersible bilge pumps. These pumps are durable and easy to install, and they offer boaters a sleek new design that has been tested to be reliable and efficient, both in harsh saltwater and freshwater uses. Designed to be with detachable universal base plate with strainer and pin (for "T-slot") to attach a level switch for automatic operation. The cartridge feature also allows complete access to the impeller for easy cleaning and maintenance. Replacing the motor cartridge only allows the fittings and hose to remain totally intact. The models are equipped with 1 straight port connection 19 mm and 1 orientable 360 degree elbow on the 500 and 750 gph versions. The low version is the best solution in tight bilge areas and features a variety of mounting options to accommodate the boat bilge. The fixing plate can be rotated making the pump extremely easy to be installed. New blister packaging available with minimum order quantity 100 pcs.

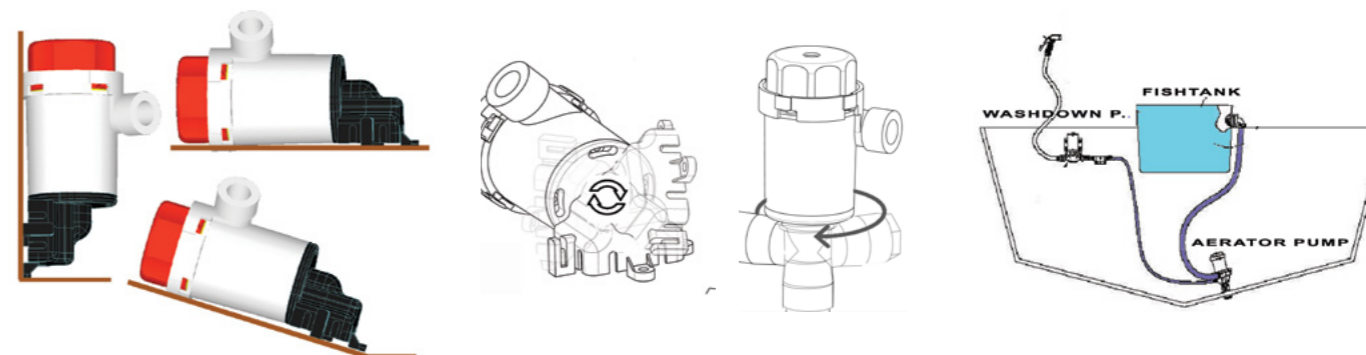


| VERSION | PART. N. | MOD. | VOLT | AMP | FLOW/MIN | FLOW 1 MT/MIN | HOSE CONNECTION | DIMENSIONS |
|------------|------------|----------|------|-----|----------|---------------|-----------------|---------------|
| STANDARD A | 5700601115 | 500 GPH | 12 | 1,8 | 32 | 25 | 19 mm | 79x130x116 mm |
| STANDARD A | 5700601133 | 750 GPH | 12 | 2,7 | 50 | 42 | 19 mm | 79x130x116 mm |
| STANDARD A | 5700601134 | 750 GPH | 24 | 1,5 | 50 | 42 | 19 mm | 79x130x116 mm |
| STANDARD A | 5700601021 | 1100 GPH | 12 | 4 | 75 | 65 | 28 mm | 79x130x116 mm |
| STANDARD A | 5700201022 | 1100 GPH | 24 | 2,5 | 75 | 65 | 28 mm | 79x130x116 mm |
| LOW C | 5700603115 | 500 GPH | 12 | 1,8 | 32 | 25 | 19 mm | 118X136x79 mm |
| LOW C | 5700603133 | 750 GPH | 12 | 2,7 | 50 | 42 | 19 mm | 118X136x79 mm |
| LOW C | 5700603134 | 750 GPH | 24 | 1,5 | 50 | 42 | 19 mm | 118X136x79 mm |
| LOW C | 5700603021 | 1100 GPH | 12 | 4 | 72 | 60 | 28 mm | 118X136x79 mm |
| LOW C | 5700603022 | 1100 GPH | 24 | 2,5 | 72 | 60 | 28 mm | 118X136x79 mm |

AERATOR BILGE PUMPS: New series of marine aerator water-cooled housing bilge pumps. These pumps are durable and easy to install, and they offer boaters a sleek new design that has been tested to be reliable and efficient, both in harsh saltwater and freshwater use. Equipped with stainless steel shaft and durable high impact thermoplastic housing. The cartridge feature also allows complete access to the impeller for easy cleaning and maintenance. Replacing the motor cartridge only allows the fittings and hose to remain totally intact. Base plate and port connection orientable for easiness of operation.

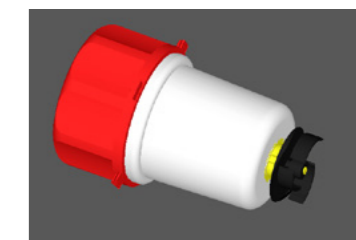


| VERSION | PART. N. | MOD. | VOLT | AMP | FLOW/MIN | FLOW 1 MT/MIN | HOSE CONNECTION | DIMENSIONS |
|------------|------------|----------|------|-----|----------|---------------|-----------------|---------------|
| TWINPORT A | 5700607115 | 500 GPH | 12 | 1,8 | 32 | 25 | 19 mm | 64x130x145mm |
| TWINPORT A | 5700607133 | 750 GPH | 12 | 2,7 | 50 | 42 | 19 mm | 64x130x145mm |
| TWINPORT A | 5700607134 | 750 GPH | 24 | 1,5 | 50 | 42 | 19 mm | 64x130x145 mm |
| TWINPORT A | 5700607021 | 1100 GPH | 12 | 4 | 75 | 65 | 28 mm | 64x130x145mm |
| TWINPORT A | 5700207022 | 1100 GPH | 24 | 2,5 | 75 | 65 | 28 mm | 64x130x145 mm |
| ANGLED B | 5700605115 | 500 GPH | 12 | 1,8 | 32 | 25 | 19 mm | 64X180x150 mm |
| ANGLED B | 5700605133 | 750 GPH | 12 | 2,7 | 50 | 42 | 19 mm | 64X180x150 mm |
| ANGLED B | 5700605134 | 750 GPH | 24 | 1,5 | 50 | 42 | 19 mm | 64X180x150 mm |
| ANGLED B | 5700605021 | 1100 GPH | 12 | 4 | 72 | 60 | 28 mm | 64x180x150 mm |
| ANGLED B | 5700205022 | 1100 GPH | 24 | 2,5 | 72 | 60 | 28 mm | 64x180x150 mm |
| STRAIGHT C | 5700609115 | 500 GPH | 12 | 1,8 | 32 | 25 | 19 mm | 64X136x245 mm |
| STRAIGHT C | 5700609133 | 750 GPH | 12 | 2,7 | 50 | 42 | 19 mm | 64X136x245 mm |
| STRAIGHT C | 5700609134 | 750 GPH | 24 | 1,5 | 50 | 42 | 19 mm | 64X136x245 mm |
| STRAIGHT C | 5700609021 | 1100 GPH | 12 | 4 | 72 | 60 | 28 mm | 64X136x245 mm |
| STRAIGHT C | 5700609022 | 1100 GPH | 24 | 2,5 | 72 | 60 | 28 mm | 64X136x245 mm |



CARTRIDGE SPARE MOTOR: Universal cartridge motor that suit all Matromarine submersible bilge new series. Replacing the motor cartridge only allows the fittings and hose to remain totally intact.

| PART. N. | MOD. | VOLT | AMP |
|------------|----------|------|-----|
| 5700600115 | 500 GPH | 12 | 1,8 |
| 5700600133 | 750 GPH | 12 | 2,7 |
| 5700600134 | 750 GPH | 24 | 1,5 |
| 5700600021 | 1100 GPH | 12 | 4,0 |
| 5700600022 | 1100 GPH | 24 | 2,0 |



HEAVY DUTY BILGE PUMPS: New heavy duty series of marine submersible bilge pumps. These pumps are durable and easy to install, and they offer boaters a sleek new design that has been tested to be reliable and efficient, both in harsh saltwater and freshwater uses. Equipped with stainless steel shaft, double ball bearing motor and mechanical seal, high-impact durable plastic housing.



- **Liquid cooled for extended motor life.**
- **Removable check valve included**
- **Heavy duty, aisi 316 steel shaft, double ball bearing motor**
- **Quality engineered mechanical seal on 2200 gph version.**
- **Automatic operation with optional float switch**
- **Complies with ISO 8848, EN 55014 Marine**
- **Easily interchangeable with most similar Bilge pumps (New upgraded base screen)**

| PART. N. | MOD. | VOLT | AMP | FLOW/MIN | FLOW 1 MT/MIN | HOSE SIZE | DIMENSION | SEAL | NON RETURN VALVE |
|------------|----------|------|-----|----------|---------------|--------------|------------------|------------|------------------|
| 5500000142 | 1750 GPH | 12 | 6 | 110 | 85 | 1"1/4 1" 1/2 | 170x158x130d. mm | MECHANICAL | YES |
| 5500000144 | 1750 GPH | 24 | 3 | 110 | 85 | 1"1/4 1" 1/2 | 170x158x130d. mm | MECHANICAL | YES |
| 5500000162 | 2250 GPH | 12 | 8 | 140 | 120 | 1"1/4 1" 1/2 | 170x158x130d. mm | MECHANICAL | YES |
| 5500000164 | 2250 GPH | 24 | 4,5 | 140 | 120 | 1"1/4 1" 1/2 | 170x158x130d. mm | MECHANICAL | YES |

THREE WAY BILGE SWITCH CONTROL

Give full control to all your equipment. Fuses included. Very simple employment just push the button for manual or automatic bilge pumping. Equipped with Carling rocker switch with operating red led light.

CD: 4500000121



AUTOMATIC BILGE PUMPS:

Laguna bilge pumps are equipped with a built-in electrically controlled snap switch making it fully automatic. No float switch needed and no power used until pump turns on when water level rises. These pumps are durable and easy to install, and they offer boaters a sleek new design that has been tested to be reliable, efficient, and automatic operative in harsh saltwater and freshwater uses. Equipped with stainless steel shaft 316, and high-impact durable plastic housing. New blister packaging available with moq 100 pcs per articles.



- *Compact, all-in-one unit
- *Snap sensing switch integrated into the pump body
- *No mercury
- *Removable clip on basket design
- *3-wire device can be run in auto or manual override mode.
- *No tools needed for maintenance
- *Extremely energy efficient

| PART. N. | MOD. | VOLT | AMP | FLOW/ MIN | FLOW 1 MT/MIN | HOSE CONNECTION | DIMENSION |
|------------|----------|------|-----|-----------|---------------|-----------------|--------------|
| 5700205115 | 500 GPH | 12 | 1,8 | 32 | 25 | 19 mm | 151x78x95 mm |
| 5700205133 | 750 GPH | 12 | 2,7 | 50 | 42 | 19 mm | 151x78x95 mm |
| 5700205134 | 750 GPH | 24 | 1,5 | 50 | 42 | 19 mm | 151x78x95 mm |
| 5700205021 | 1100 GPH | 12 | 4 | 75 | 65 | 29 mm | 151x78x95 mm |
| 5700205022 | 1100 GPH | 24 | 2,5 | 75 | 65 | 29 mm | 151x78x95 mm |

DIGITAL SENSOR SWITCH:

New digital technology. 5 years tested new sensor built in technology, designed and developed from our R&D team, The totally sealed detecting sensors are never in contact with water, thus assuring a high corrosion strength, without being affected by oil or foreign discards. LAGUNA SWITCH activates at a 50 mm (2") fluid level and deactivates at a 20 mm (3/4") fluid range. A five seconds delay prevents false starts. LAGUNA switch is rated to handle all submersible pumps up to 20 amps at 12 or 24 volts.

CD. 8500000107 12-24 V.



- Switch is rated to handle all submersible pumps up to 20 amps at 12 or 24 volts.
- No moving parts
- Totally sealed solid state electronics
- No mercury
- Certificated according to ISO 8846 marine en 55014



AUTOMATIC SWITCHES:



New mercury-free switch with "SNAP" movement with over 500.000 on/off. tested. 2 years of warranty. ISO 8846

CD:8500000108 14 Amp. dim. 11x 7x 5h. cm
 CD:8500000109 14 Amp. with integral protection



Ocean Marine Searchlight

Our range of marine lights are designed to withstand the rigors of sea-life. We engineer each product to match exact performance specification listings for an extra margin of safety. Our spotlights are designed to offer the best combination of beam spread(width) and intensity (length).Remote control and 4 mt extension lead are included, Spare extension lead and double station control panel available. All manufactured in special ABS (UVA protected) sun ray-proof materials

NEW SERIES OF SEARCHLIGHT PRO HALOGEN AND LED:



Designed to offer the best combination of spread beam (width) and intensity (length). Brighter, wider beam pattern for maximum viewing safety. The led series is equipped with 2 bright lights and high powered 25-15 watt led, deep light at 10 angle beam and 60 on the spot light. Maximum beam distance at 300 meters.

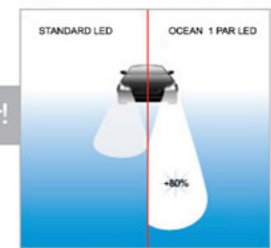
New Brite LED technologies equivalent to 200 watt halogen. 7500 hours lifetime. Two light operational modes: deep and spot A new powerful searchlight with improved style and performances, ideal for medium and big-sized yachts. Complete of water-proof remote control. Upon request the spotlight can be supplied with extension lead (4 mt. long). Body and base are in sun-ray white ASA material. Excellent corrosion-resistance, particularly suitable also in case of adverse weather conditions.

New wireless remote control for the new series of "searchlight pro" and suitable for all old and present matromarine searchlights, halogen led and xenon

Xenon : Brighter, wider beam pattern for maximum viewing safety Equipped with bright light and high powered 55 watt xenon lamp. Creates a 30 degree wider beam pattern and delivers still 8 times more than the halogen equivalent 55 watt lamp. More efficient design to perform better and run cooler than standard halogen lamps. Meets or exceeds original equipment quality standards.2000 hours lifetime.



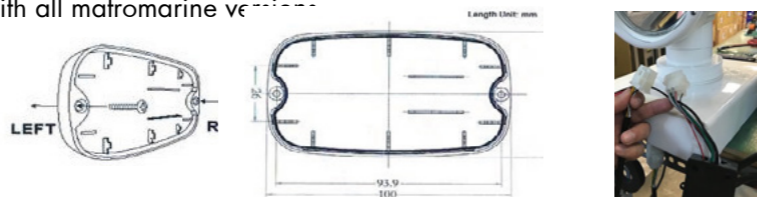
80% Brighter!





| PART. N. | MOD. | VOLT | AMP | CANDLE-POWER | RANGE AT 1 LUX | SPARE BULB | REMOTE CONTROL | LAMP |
|------------|--------------|------|-----|--------------|----------------|------------|----------------|---------|
| 7000101112 | wireless LED | 12 | 5 | 170000 | 320 meters | 7000100012 | 7000000110 | LED |
| 7000101124 | wireless LED | 24 | 3 | 170000 | 320 meters | 7000100024 | 7000000110 | LED |
| 7000001112 | wired LED | 12 | 9 | 170000 | 320 meters | 7100001312 | 7000000112 | LED |
| 7000001124 | wired LED | 24 | 6,5 | 170000 | 320 meters | 7100001324 | 7200000124 | LED |
| 7000101212 | wireless | 12 | 8 | 125000 | 250 meters | 7000100212 | 7000000110 | HALOGEN |
| 7000101224 | wireless | 24 | 4 | 125000 | 250 meters | 7200100224 | 7000000110 | HALOGEN |
| 7000001212 | wired | 12 | 3 | 125000 | 250 meters | 7000100212 | 7000000112 | HALOGEN |
| 7000001224 | wired | 24 | 1,5 | 125000 | 250 meters | 7200100224 | 7000000124 | HALOGEN |

Wireless panel: New wireless remote control for the new series of "searchlight pro" and suitable for all old and present matromarine searchlights. Plug and play with all matromarine searchlights.
 7000000110 complete wireless remote pair
 7000000111 spare wireless panel.
 * Handheld & Dashmount



Double spotlight: Two sealed beams 5" with filament light allowing to enjoy always of a very luminous ray on each light, both if the light shaft is directed upwards and also when it is oriented down. Easy mounting thanks to the fitted fast connections.

Manual version with handle rotation 340 degrees, Same characteristics of the electrical single version.

Flood Light: Manufactured in stainless steel. Sealed beam bulb No remote control, No extension lead. All electric spotlights can be supplied with an extra extension lead (4 mt. long) upon request



| PART. N. | MOD. | VOLT | AMP | CANDLE-POWER | RANGE AT 1 LUX | SPARE BULB | REMOTE CONTROL | DOUBLE STATION | PIC. |
|------------|------------------|------|-----|--------------|----------------|------------|----------------|----------------|------|
| 7000000001 | manual 55 W, | 12 | 5 | 100000 | 262 meters | 7000001012 | NO | NO | A |
| 7000000002 | manual 55 W, | 24 | 3 | 100000 | 262 meters | 7000001024 | NO | NO | A |
| 7100000012 | electric 2X55W. | 12 | 9 | 100000 | 262 meters | 7100001312 | 7200000112 | 7100000112 | B |
| 7100000024 | electric 2X55W. | 24 | 6,5 | 100000 | 262 meters | 7100001324 | 7200000124 | 7100000124 | B |
| 7200100012 | xenon 55 W. | 12 | 8 | 600000 | 400 meters | 7200101012 | 7200000112 | 7200100112 | C |
| 7200100024 | xenon 55 W. | 24 | 4 | 600000 | 400 meters | 7200101024 | 7200000124 | 7200100124 | C |
| 7000000003 | floodlight 55 W | 12 | 3 | 60000 | 100 meters | NO | NO | NO | D |
| 7000000004 | floodlight 55 W. | 24 | 1,5 | 600000 | 100 meters | NO | NO | NO | D |

BATTERY SWITCH

Our heavy-duty battery switch allows you to switch from battery No 1 to No 2 or both while engine is in operation without damaging alternator diodes or regulators.
 Capacity: 6V. – 12V. – 32V.–
 Continuous 250 Amp. Interval 300 A. Only non corrosive materials employed.



CD. 7500000650
 DIMENSIONS: diameter 145 x 67 mm

FOOT SWITCH

Waterproof and suitable to any type of solenoid, universal 12 or 24 Volt. Available in 2 different colours: black or white

CD. 4500000002 Down
 CD. 4500000003 Up
 CD. 4500000022 Down WHITE
 CD. 4500000033 Up WHITE



DIMENSIONS : diameter 73 x 13 mm

POWER TRIM

It handles of a new concept of trim tab system, consisting of a revolutionary electro-mechanical movement. It is powerful, precise, trouble-free, and, contrarily to the hydraulic mode, it doesn't need a maintenance service or an expensive installation.
 Shaft made of stainless steel and nylon glass fiber. Body without any hydraulic tube. Equipped with stainless steel hinge swivel. Possibility of turning at 180 degrees without problems. The stern mounting plates and the flaps are interchangeable with Bennett cylinders.

TRIM TABS

Designed to improve the boat performance, these trim tabs reduce fuel consumption and improve stability in trimming the boats. Manufactured in 304 stainless steel, they are easy to fit and to adjust, and can be mounted on different sizes of boats, according to the engine power.
 Made of stainless steel, model fitted with 2.5 mm thickness and special swivelling hinge; the flap can rotate 180° without forcing or breaking the transom bracket. Can be mounted with our electro-mechanical cylinders or use the Bennett hydraulic models.

CD 3000000812 CYLINDER 12 V.
 CD 3000000924 CYLINDER PAIR 24 V.

CD 3000000912 CYLINDER PAIR 12 V.
 CD 3000000911 CONTROL TRIM



CD 3100000912 ELECTRIM 9 x 12"
 CD 3000000916 ELECTRIM 9 x 16"
 CD 3000000922 ELECTRIM 9 x 22"



30x23 cm boat size: 4/4.5 mt.
 40x23 cm boat size: 4.5/5 mt.
 55x23 cm boat size: 5/6 mt."

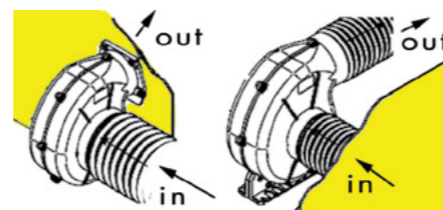


Ocean Marine Blowers

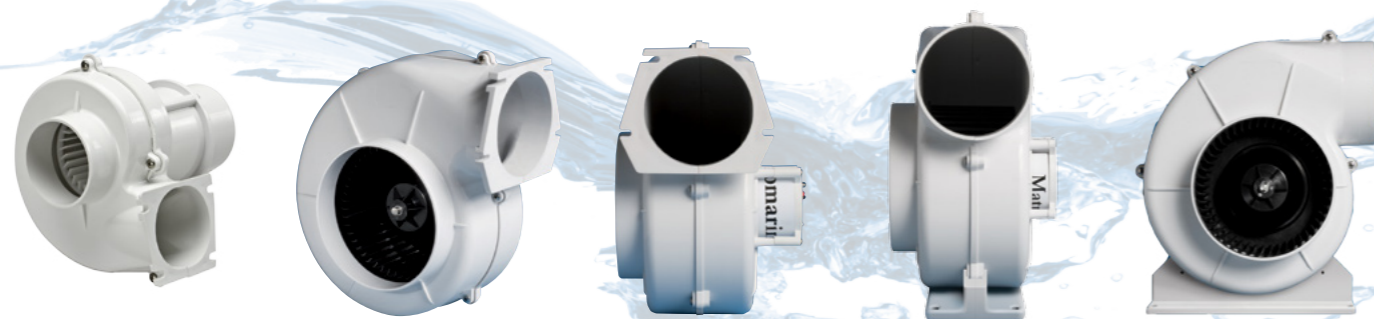
CENTRIFUGAL BLOWERS: We manufacture a wide selection of marine blowers for marine engine compartments in strong nylon PA6 material homologated by R.I.N.A. and with different capacities from 280 m3 to 1000 m3 per hour, Screws and shaft in stainless steel. Flex mount and very strong dynamic flange mount. Low current draw. Continuous duty. Best ratio on the market between volume air flow and compact size. All models are ignition protected ISO 8846. Complying with ISO 8849, EN 55014, ISO 10133.

Flange Mount

Flex Mount



| PART. N. | MODEL | VOLT | AMP | CAPACITY MCH/CFM | PORT CONNECTIONS | DIMENSIONS LARGE X LENGTH X HEIGHT |
|------------|-----------|------|-----|------------------|--------------------------------|------------------------------------|
| 5500001212 | FLANGE 3" | 12 | 3,8 | 280 / 163 | Inlet: 75 mm - Outlet: 72 mm | 200 x 165 x 195 mm |
| 5500001224 | FLANGE 3" | 24 | 2 | 280 / 163 | Inlet: 75 mm - Outlet: 72 mm | 200 x 165 x 195 mm |
| 5500101212 | FLANGE 4" | 12 | 12 | 550 / 344 | Inlet: 100 mm - Outlet: 103 mm | 290 x 257 x 150 mm |
| 5500101224 | FLANGE 4" | 24 | 6 | 550 / 344 | Inlet: 100 mm - Outlet: 103 mm | 290 x 257 x 150 mm |
| 5500101412 | FLANGE 6" | 12 | 10 | 750 / 441 | Inlet: 150 mm - Outlet: 103 mm | 290 x 257 x 170 mm |
| 5500101424 | FLANGE 6" | 24 | 5 | 750 / 441 | Inlet: 150 mm - Outlet: 103 mm | 290 x 257 x 170 mm |
| 5500101624 | FLANGE 6" | 24 | 9 | 1000 / 589 | Inlet: 150 mm - Outlet: 103 mm | 290 x 257 x 180 mm |
| 5500102212 | FLEX 4" | 12 | 12 | 550 / 344 | Inlet: 100 mm - Outlet: 103 mm | 290 x 257 x 150 mm |
| 5500102224 | FLEX 4" | 24 | 6 | 550 / 344 | Inlet: 100 mm - Outlet: 103 mm | 290 x 257 x 150 mm |
| 5500102412 | FLEX 6" | 12 | 10 | 750 / 441 | Inlet: 150 mm - Outlet: 103 mm | 290 x 257 x 170 mm |
| 5500102424 | FLEX 6" | 24 | 5 | 750 / 441 | Inlet: 150 mm - Outlet: 103 mm | 290 x 257 x 170 mm |
| 5500102624 | FLEX 6" | 24 | 9 | 1000 / 589 | Inlet: 150 mm - Outlet: 103 mm | 290 x 257 x 180 mm |



INLINE SERIES: A modern range of inline blowers utilizing advanced fan blade design technologies suitable for bulkhead mounting and for receiving 178 mm. diameter hoses. The first vane axial-flow bilge blowers designed using aerospace technology to maximize performance. No other bilge blowers on the market provides such a powerful system output at such a low power input and in so a compact size. Silent operation. For added durability, Matromarine incorporated an engineered plastic housing that withstands deformation during installation and shelters blade from housing interference. Complying with ISO 8846, EN 55014.



- **Compact and simple design**
- **Flexible installation**
- **Low power consumption**
- **Quiet operation**
- **Meets ISO 8846 and EN 55014 standards**
- **Five blade design maximizes flow and performance**
- **Long motor lifetime from powerful airflow cooling.**



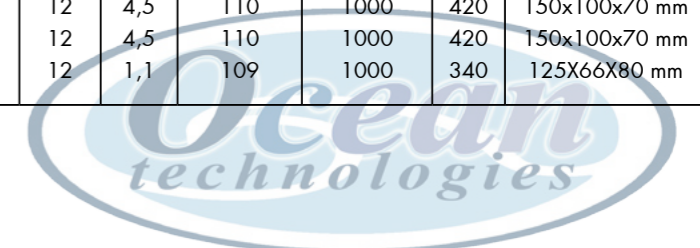
| PART. N. | MODEL | VOLT | AMP | CAPACITY MCH/CFM | USAGE | PORT CONN. | DIMENSION LARGE X LENGTH X HEIGHT |
|------------|---------------------|------|-----|------------------|-----------------|------------|-----------------------------------|
| 5500105012 | FLANGE 7" VERSION A | 12 | 5 | 750 / 441 | INTERMITTENT | 178 MM | 250 x 220 HOSE:178 mm |
| 5500105024 | FLANGE 7" VERSION A | 24 | 2,5 | 750 / 441 | INTERMITTENT | 178 MM | 250 x 220 HOSE:178 mm |
| 5500105512 | FLANGE 7" VERSION B | 12 | 5 | 750 / 441 | INTERMITTENT | 178 MM | 165 x 220 HOSE:178 mm |
| 5500105524 | FLANGE 7" VERSION B | 24 | 2,5 | 750 / 441 | INTERMITTENT | 178 MM | 165 x 220 HOSE:178 mm |
| 5500115012 | FLANGE 7" VERSION A | 12 | 7 | 1000 / 589 | CONTINUOUS DUTY | 178 MM | 250 x 220 HOSE:178 mm |
| 5500115024 | FLANGE 7" VERSION A | 24 | 3,5 | 1000 / 589 | CONTINUOUS DUTY | 178 MM | 250 x 220 HOSE:178 mm |
| 5500115512 | FLANGE 7" VERSION B | 12 | 7 | 1000 / 589 | CONTINUOUS DUTY | 178 MM | 165 x 220 HOSE:178 mm |
| 5500115524 | FLANGE 7" VERSION B | 24 | 3,5 | 1000 / 589 | CONTINUOUS DUTY | 178 MM | 165 x 220 HOSE:178 mm |

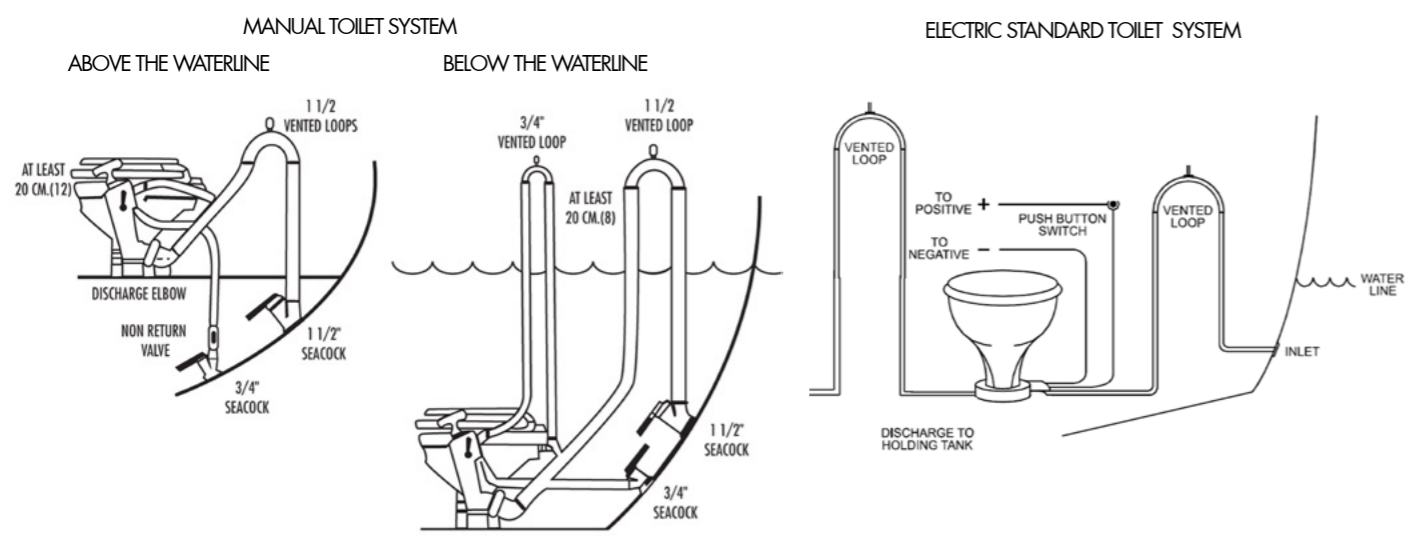
Ocean Marine Horns

A wide range of marine electromagnetic horns for pleasure boats. Casing in strong ABS material particularly suitable to roll bar installation. Easy to be mounted. Corrosion-resistant. Tested at 50.000 cycles (1" on-4" off) Type approval 70/388 EEC. Supplied with stainless steel fixed plate. Flush mounting horn to be installed on deck. Fully watertight.

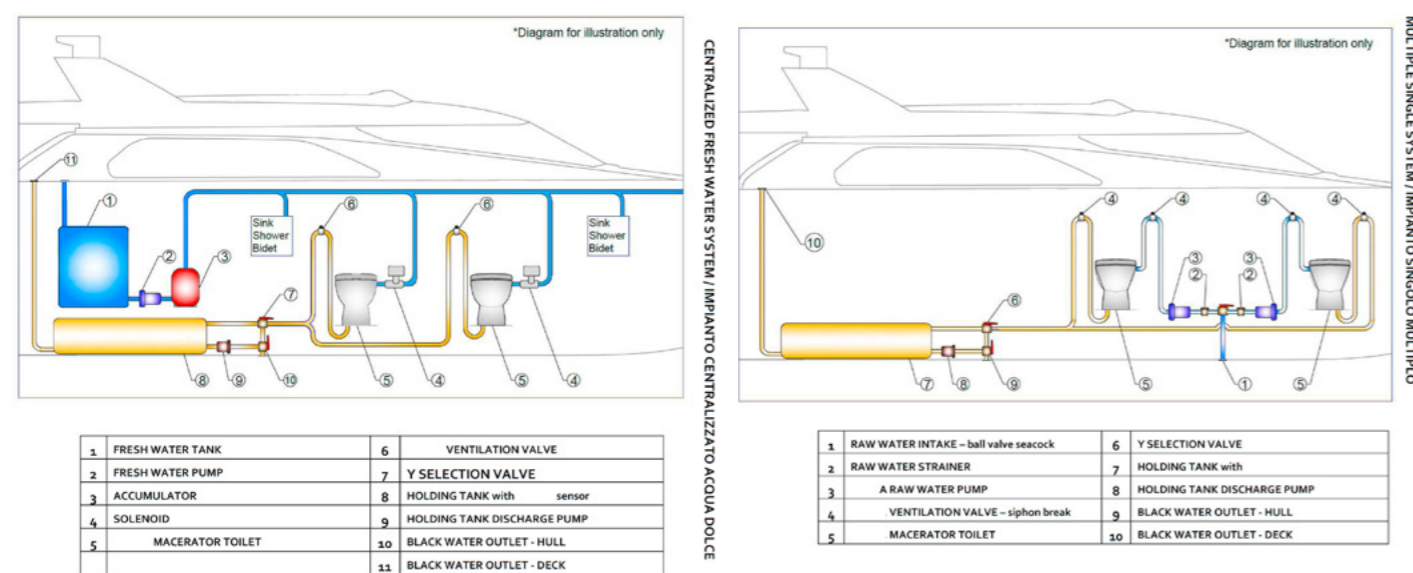


| PART. N. | COLOUR AND MATERIAL | TYPE | VOLT | AMP | DB AT 2 MT. | DISTANCE MT | HZ | DIMENSION L X W X H |
|------------|-------------------------------|---------|------|-----|-------------|-------------|-----|---------------------|
| 7500000500 | WHITE ABS/ ZINC IRIDE | SUPPORT | 12 | 4,5 | 110 | 1000 | 420 | 150x100x70 mm |
| 7500000501 | WHITE-CHROMED ABS./ZINC IRIDE | SUPPORT | 12 | 4,5 | 110 | 1000 | 420 | 150x100x70 mm |
| 7500000505 | BLACK ABS /ZINC IRIDE | SUPPORT | 12 | 4,5 | 110 | 1000 | 420 | 150x100x70 mm |
| 7500000510 | BLACK CHROMED/ZINC IRIDE | SUPPORT | 12 | 4,5 | 110 | 1000 | 420 | 150x100x70 mm |
| 7500000512 | WHITE ABS/ZINC IRIDE | FLUSH | 12 | 1,1 | 109 | 1000 | 340 | 125X66X80 mm |



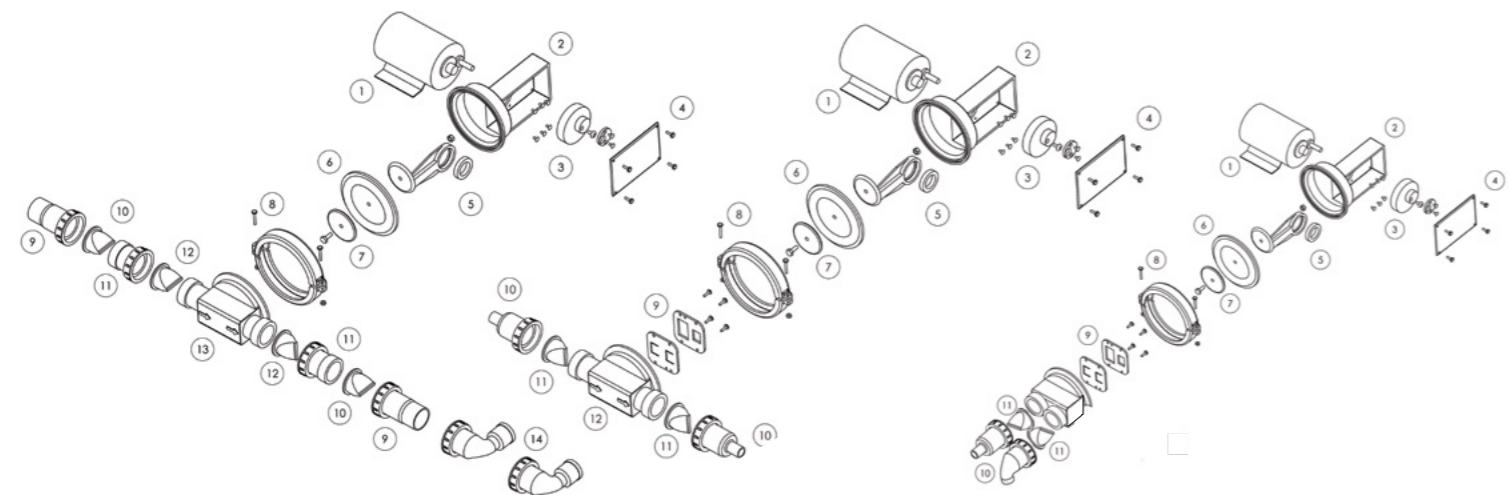


ELECTRIC SILENT TOILET SYSTEM



WASTE AND GREY WATER PUMPS

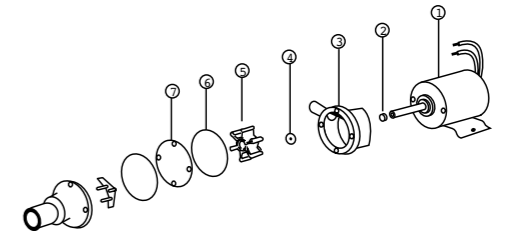
COMPACT GREY WATER PUMP



- EXPLODED VIEW / SPARE PART LIST:
- | | | |
|---|---|---|
| 01) 6000108712-24 MOTOR 12/24 V. | 01) 6000108512-24 22 LITRES MOTOR 12/24V. | 01) 6000108212-24 22 LITRES MOTOR 12/24V. |
| 05)-07) 8700001105 PISTON ROD. | 05)-07) 8700001105 PISTON ROD. | 05)-07) 8700001105 PISTON ROD. |
| 06)-10)-12) 8700001106 GASKET KIT | 06)-9)-11) 8700101106 GASKET KIT | 06)-9)-11) 8700101111 GASKET KIT |
| 08) 8700001108 FIXING CLAMPS | 08) 8700001108 FIXING CLAMPS | 08) 8700001108 FIXING CLAMPS |
| 09)-10)-11)-12)-13)-14) 8700001110 WASTE PUMP GROUP | 10)-11)-12) 8700101110 GREY PUMP GROUP WITH 19 AND 25 MM. PORT. | 10)-11)-12) 8700101110 GREY PUMP GROUP WITH 19 AND 25 MM. PORT. |

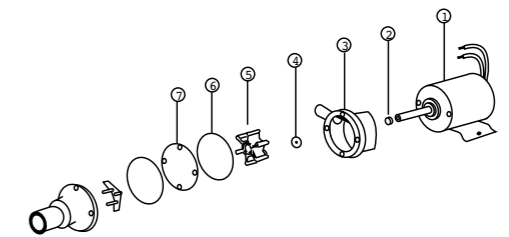
MACERATOR PUMP

- EXPLODED VIEW.
 SPARE PART LIST:
 01) 6000000912/924 MOTOR 12/24 V.
 08) PLO00MC002 MACERATOR PROPELLER
 04) GM000PK008 OIL SEAL
 05) GM000PK001 MACERATOR IMPELLER
 5500000005 MACERATOR KIT (2-4-5-6)



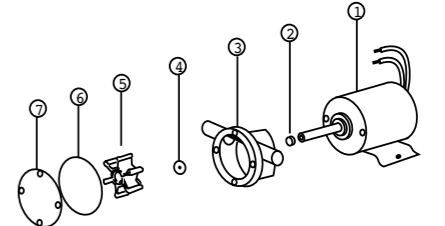
MAXI MACERATOR PUMP

- EXPLODED VIEW.
 SPARE PART LIST:
 01) 6000001012/1024 MOTOR 12/24 V.
 08) PLO00MC002 MACERATOR PROPELLER
 04) GM000PK008 OIL SEAL
 05) GM000PK001 MACERATOR IMPELLER
 5500000005 MACERATOR KIT (2-4-5-6)



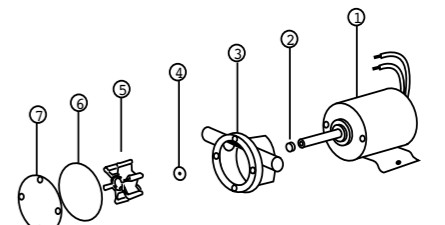
DECK PUMP AND ECO DECK

- EXPLODED VIEW.
 SPARE PART LIST:
 01) 6000000112/24 MOTOR 12/24 V.
 04) GM000PK008 OIL SEAL
 05) GM000PK001 IMPELLER 6000001113 ULTRA NITRILE IMPELLER
 8500000111 SERVICE KIT (2-4-5-6)
 8500000100 PUMP GROUP (3-4-5-6-7)



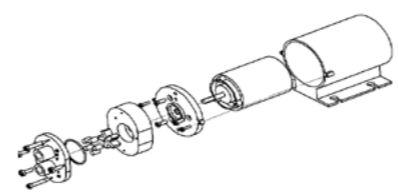
MAXI DECK PUMP:

- EXPLODED VIEW.
 SPARE PART LIST:
 01) 6000000212/24 MOTOR 12/24 V.
 04) GM000PK008 OIL SEAL
 05) GM000PK001 IMPELLER 6000001113 ULTRA NITRILE IMPELLER
 8500000111 SERVICE KIT (2-4-5-6)
 8500000100 PUMP GROUP (3-4-5-6-7)



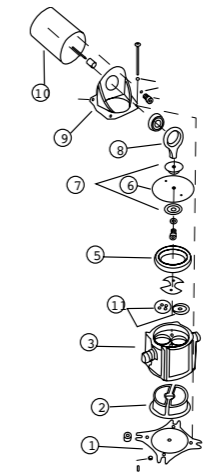
GEAR PUMP

- MOTOR GROUP: 6000000312 8 LPM 12 V
 MOTOR GROUP: 6000000324 8 LPM 24 V
 MOTOR GROUP 6000000512 12 LPM 12V.
 MOTOR GROUP 6000000524 12 LPM 24V.
 PUMP GROUP: 8500000308 FOR BOTH MODELS.
 MN000PI001: HOSE BARB 14 MM. 3/8"
 8500000310 HOSES KIT 8/6 MM
 8500000510 HOSES KIT 8/6 MM FOR 512 AND 524 VERSIONS.



DIAPHRAGM PUMP

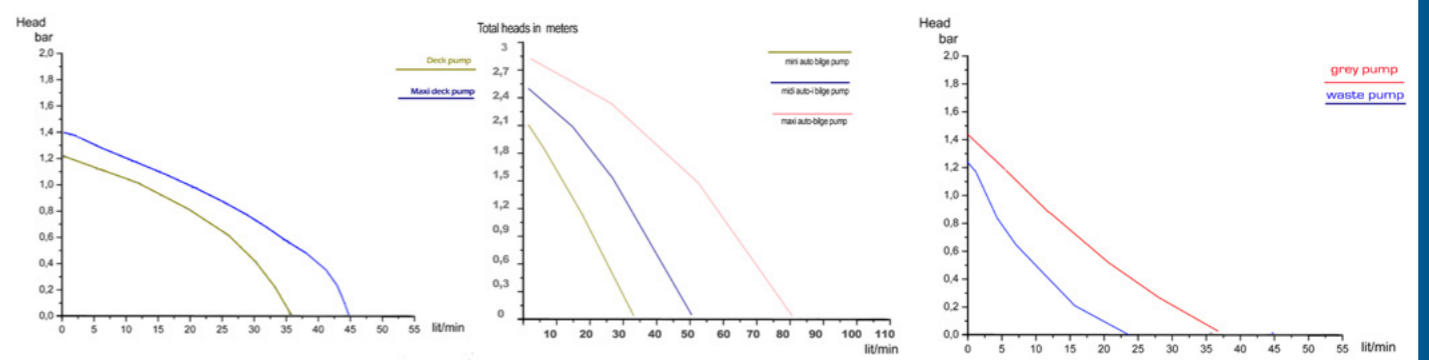
- EXPLODED VIEW.
 SPARE PART LIST:
 1) PLO00PM005 BOTTOM PLATE
 2) GM000PM004 PULSATION DAMPENER
 3) PLO00PM001 PUMP BODY
 5) PLO00PM002 RETAINER
 6) GM000PM001 DIAPHRAGM (6-7-11-2)
 8500001800 SERVICE KIT
 7) TC000PM003 DRAWN WASHERS
 8) 8500001808 CONNECTING ROD
 9) PLO00PM006 MOTOR BRACKET
 10) 6000001812/24 MOTOR 12/24 V.



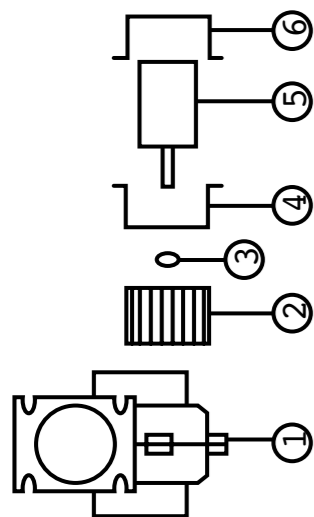
IMPELLER PUMPS

SUBMERSIBLE BILGE PUMPS

GREY/WASTE WATER PUMP



CENTRIFUGAL BLOWER:



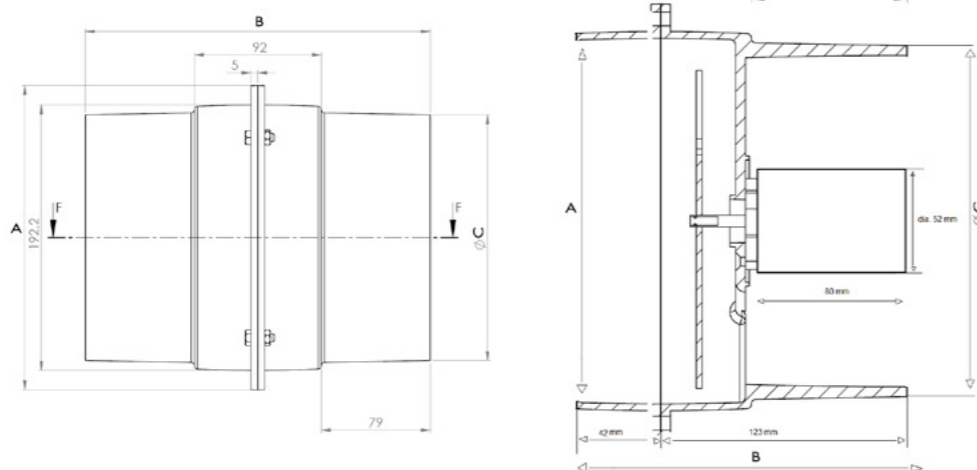
- SPARE PARTS:
 2) PLO00BLO04 Blower Fan 280 M3/H 2)
 PLO00BLO12 Blower Fan (All Other Models)
 5) 6000001212-24 Motor Blower 12 V-24V 280 M3/H
 6000101212-24 Motor Blower 12 V-24V- 550 M3/H
 6000101412/ 24 Motor Blower 12 V.-24 V 750 M3/H
 6000101624 Motor Blower 24 V1000 M3/H
 PLO00BLO13 Plastic Flexmount bracket (Model< 550 M3/H)

- SPARE GRIDS:
 6000001215 Grate For 5500001212/24
 PLO00BLO17 Grate 120X120 mm.for all the other models
 PLO00BLO05 Reduction For 5500001212/24

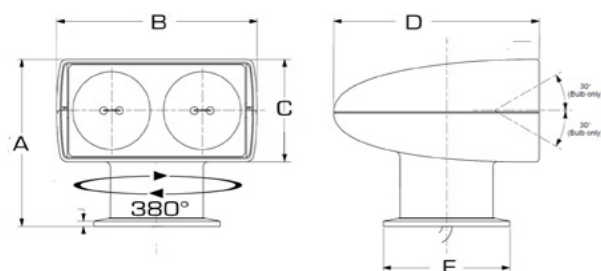
INLINE BLOWERS:

- SPARE PARTS:
 1)6000001212 Motor Blower 12 V
 6000001224 Motor Blower 24 V
 2)PLO0IBLO03 Blower Fan blade
 3)PLO0LBLO01 Blower housing
 4)PLO0LBLO02 Blower housing flange v.
 5)TC000BLO01 SS. Bracket

| DESCRIPTION | WEIGHT | A | B | C |
|--------------------------------------|--------|-----------|-----------|-----------|
| INLINE BLOWER 750-1000 MC/H | 1,6 KG | 192 MM | 250 MM | 178 MM |
| INLINE BLOWER 750-1000MC/H FLANGE | 1,1 KG | 192 MM | 165 MM | 178 MM |



SPOTLIGHTS



- SPARE PARTS:
 ME000FR010 QUICK EXTENSION LEAD 4 MT.
 7000002008 BASE MOTOR GROUP
 7000002009 BODY MOTOR GROUP

Dimension in mm. column "c" is the size of the spare head-light.

| PART N. | DESCRIPTION | WEIGHT KG. | A | B | C | D | E |
|---------------|-------------|------------|-----|-----|-----|-----|-----|
| 7000001112-24 | SINGLE | 2 | 220 | 180 | 146 | 210 | 150 |
| 7100000012-24 | DOUBLE | 2,2 | 220 | 275 | 115 | 225 | 120 |
| 7000101112-24 | LED | 2,2 | 220 | 180 | 146 | 210 | 150 |
| 7200000012-24 | 2005 | 2,4 | 320 | 260 | 156 | 350 | 143 |
| 7200100012-24 | XENON | 2,9 | 320 | 260 | 156 | 350 | 143 |
| 7000000003-4 | FLOODLIGHT | 0,6 | 140 | 120 | 115 | 65 | 25 |

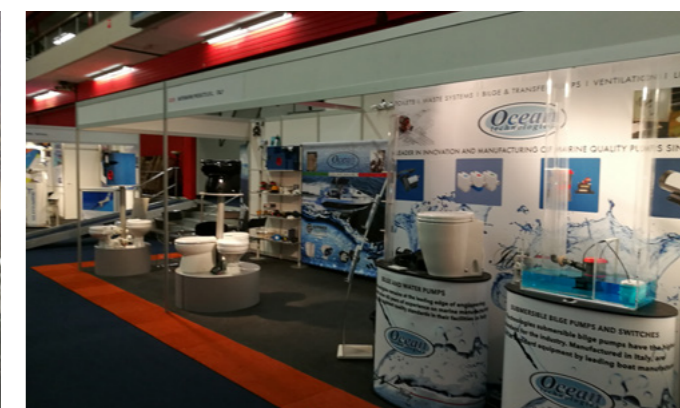


Worldwide Distributors, Local Service & customer satisfaction

Ocean Technologies is a well - known brand with a reputation built on 40 years of high quality design expertise. Today, we supply marine customers around the world with innovative marine pumps and toilets,waste water handling products,lighting and ventilation equipments. We are proud to design, manufacture and export them in 70 countries all over the world through our authorized distributors and private labels customers. Call us directly or send us emails for product and installation advice and local service. Email: info@matromarine.com | Phone +390109630004.

Matromarine is strongly believing that customer service is the foundation of our ability to build and maintain business relationships in the markets we service. Our philosophy will always lead its commitment to personal service, which is evident in our dedication to details.

Matromarine continues to raise the bar for end-product performance with cutting edge technology, intellectual property and global manufacturing capabilities. We look confidently to the challenges of the new century. This confidence is grounded on a conviction that the support of customers and employees provides the synergy for an ever growing success.





Discover our range of products in the new website:

WWW.MATROMARINE.COM



MATROMARINE
PRODUCTS

MATROMARINE PRODUCTS SRL
VIA SEREGHE 1 16017
ISOLA DEL CANTONE
GENOVA ITALY
TEL.:+390109630004
FAX.:+390109630029
INFO@MATROMARINE.COM

All rights reserved. Matromarine is not responsible for any printing, mechanical or other errors and reserves the right to change technical specifications, design features and dimensional data without prior notice or obligation